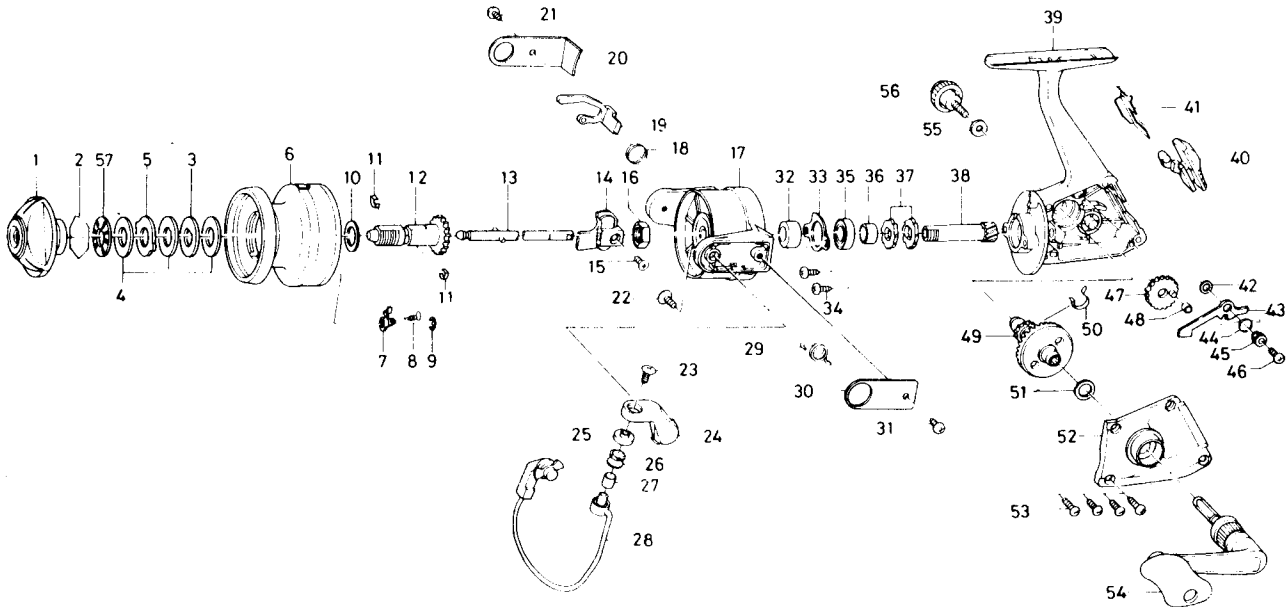


SPINNING REEL **UL13**



Key No. 1-12
E35-1401 Spool assembly

Key No.	Parts No.	Parts Name	Key No.	Parts No.	Parts Name
1	E14-0901	Drag knob	30	B61-8903	Bail spring cover
2	171-7701	Drag washer retainer	31	B61-7902	Bail spring cover screw
3	374-4802	Key washer	32	E14-3101	Spacer A
4	E14-3301	Drag washer A	33	B45-6402	Bearing retainer
5	373-3603	Eared washer	34	B83-4402	Bearing retainer screw
6	F00-6901	Spool	35	634-1301	Ball bearing
7	B07-5301	Click pawl	36	E14-3001	Spacer B
8	144-1211	Click spring	37	E11-3501	Anti reverse ratchet
9	320-5901	Click retainer	38	E13-9501	Pinion gear
10	E12-3501	Spool washer	39	E35-1201	Body assembly
11	151-7211	Spool metal leaf spring	40	E13-9101	Anti-reverse lever
12	E23-1801	Spool metal	41	B79-0101	Anti-reverse cam
13	E13-9902	Main shaft assembly	42	E15-3101	Anti-reverse pawl washer
14	E13-9601	Oscillating slider	43	E13-9301	Anti-reverse pawl
15	351-0311	Oscillating block screw	44	E13-9401	Anti-reverse pawl spring
16	341-9201	Rotor nut	45	B95-9501	Anti reverse pawl collar
17	B61-8505	Rotor	46	B00-8601	Anti reverse pawl screw
18	B61-9101	Lever spring	47	B59-1704	Oscillating gear
19	B61-9201	Bail trip lever	48	B59-1901	Oscillating gear collar
20	B61-9703	Bail trip cover	49	E14-3501	Drive gear
21	B61-7902	Bail trip cover screw	50	E13-9802	Anti-reverse pawl spring
22	B01-7101	Bail arm screw	51	375-8500	Drive gear washer
23	352-2503	Line roller screw	52	E35-1301	Side cover
24	E13-8801	Bail arm	53	E13-0502	Side cover screw
25	B45-1601	Line roller washer	54	E09-4702	Handle assembly
26	250-3921	Line roller	55	B92-4901	Handle lock washer
27	B45-1501	Line roller bushing	56	E03-5502	Handle lock screw
28	E14-1101	Bail	57	E15-4101	Drag washer B
29	B61-8601	Bail spring			