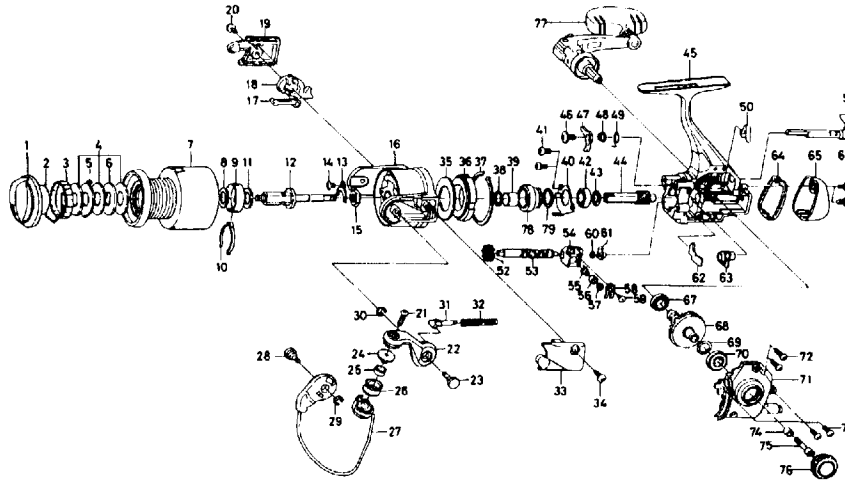


SPINNING REEL TOURNAMENT T-S2500i



| Key No. | Parts No. | Parts Name | Key No. | Parts No. | Parts Name |
|---------|-----------|-------------------------------|---------|-----------|--------------------------------|
| 2-7 | E12-3407 | Spool assembly | 40 | F15-1102 | Bearing retainer |
| 1 | F17-7402 | Drag knob | 41 | F21-2201 | Bearing retainer screw |
| 2 | F06-2601 | Drag washer retainer | 42 | 636-6401 | Ball Bearing B |
| 3 | E12-2801 | Drag knob click plate | 43 | F26-3101 | Pinion washer |
| 4 | B36-0204 | Drag washer | 44 | F16-2501 | Pinion gear |
| 5 | E15-0101 | Eared washer | 45 | F30-6501 | Body assembly |
| 6 | B65-2302 | Key washer | 46 | L00-1801 | Anti-reverse pawl screw |
| 7 | E12-2507 | Spool assembly | 47 | F15-1501 | Anti-reverse pawl |
| 8 | F06-2701 | Spool washer | 48 | F15-8301 | Anti-reverse pawl collar |
| 9 | E12-2301 | Click leaf spring holder | 49 | F15-1601 | Anti-reverse pawl spring |
| 10 | B74-7702 | Spool click leaf spring | 50 | E26-8701 | Anti-reverse cam spring |
| 11 | 371-2824 | Main shaft washer | 51 | F16-2807 | Anti-reverse lever |
| 12 | F16-4301 | Main shaft | 52 | E41-7101 | Worm shaft gear |
| 13 | B99-5101 | Rotor nut holding plate | 53 | F30-6601 | Worm shaft |
| 14 | 351-1804 | Rotor nut holding plate screw | 54 | F02-4301 | Oscillating slider |
| 15 | 341-9204 | Rotor nut | 55 | F19-1202 | Oscillating pawl |
| 16 | F30-6701 | Rotor | 56 | E19-1301 | Oscillating pawl bush |
| 17 | F01-4301 | Bail trip plate | 57 | 375-0801 | Oscillating pawl washer |
| 18 | F01-4401 | Bail trip lever | 58 | E24-4901 | Oscillating slider cover |
| 19 | F17-6905 | Bail trip cover | 59 | E15-0203 | Oscillating slider cover screw |
| 20 | F38-5102 | Bail trip cover screw | 60 | B53-6102 | Worm shaft washer |
| 21 | B67-9306 | Line roller screw | 61 | F05-6901 | Worm shaft collar |
| 22 | F17-6506 | Bail arm | 62 | F08-7201 | Shield plate |
| 23 | F15-2501 | Bail arm screw | 63 | F0B-7101 | Pinion collar |
| 24 | F06-6302 | Line roller collar | 64 | F16-3903 | Water shield |
| 25 | F05-5601 | Ball bearing A | 65 | F16-4001 | Rear cover |
| 26 | F30-5101 | Line roller | 66 | E24-8101 | Rear cover screw |
| 27 | F30-7201 | Bail assembly | 67 | E30-6801 | Ball bearing C |
| 28 | F15-2501 | Bail trip cam screw | 68 | F07-9503 | Drive gear |
| 29 | 320-5901 | Bail trip cam screw retainer | 69 | 375-8502 | Drive gear washer |
| 30 | 320-5901 | Bail arm screw retainer | 70 | 637-5701 | Ball bearing D |
| 31 | F24-6801 | Bail spring shaft | 71 | F17-6201 | Side cover |
| 32 | F26-8301 | Bail spring | 72 | E13-0501 | Side cover screw A |
| 33 | F17-6605 | Bail spring cover | 73 | E13-0501 | Side cover screw B |
| 34 | E24-8101 | Bail spring cover screw | 74 | F16-9301 | Handle collar |
| 35 | F19-7202 | Oiled washer | 75 | F38-7101 | Handle screw |
| 36 | F15-3301 | Roller clutch | 76 | F14-3601 | Handle screw cap |
| 37 | F21-2501 | Roller clutch retainer | 77 | F30-7501 | Handle assembly |
| 38 | 375-8507 | Spacing sleeve A | 78 | F15-1201 | Anti-reverse ratchet |
| 39 | F15-5101 | Spacing sleeve B | 79 | F26-8501 | Bearing washer |