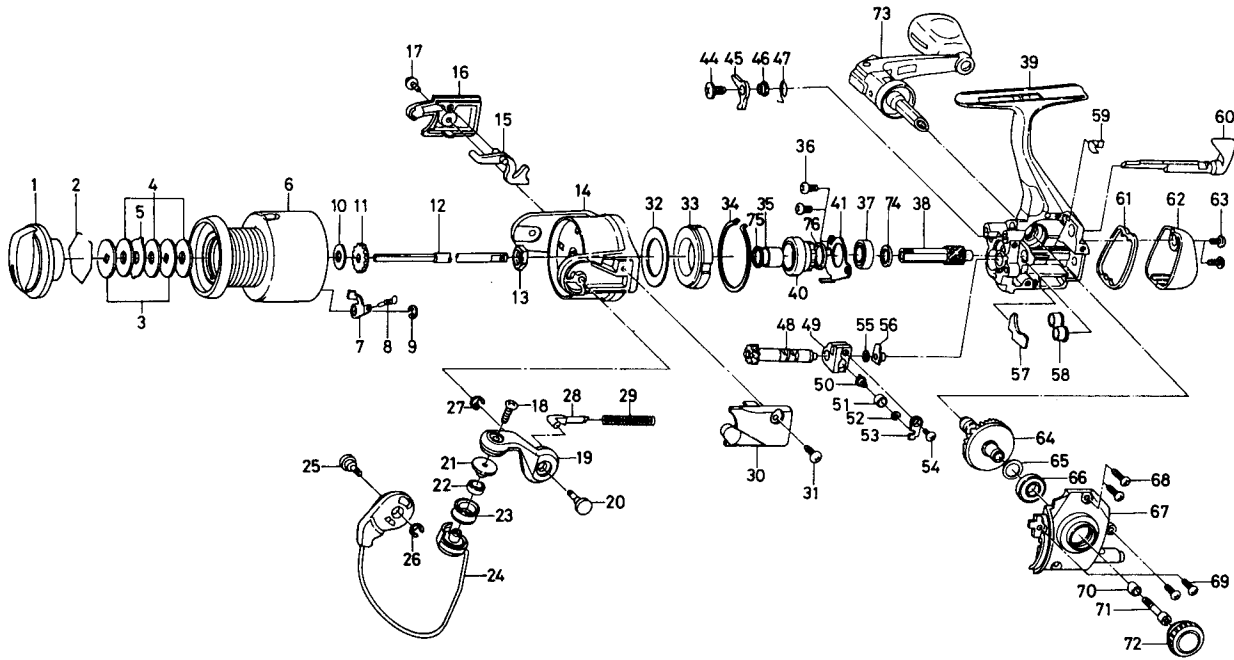




Please order by part number, not key number.

# SPINNING REEL TD700i/1000i



No. 2-9 F29-6706 Spool assembly

| Key NO. | Parts No. | Parts Name                   |
|---------|-----------|------------------------------|
| 1       | F20-4405  | Drag knob                    |
| 2       | 171-7701  | Drag washer retainer         |
| 3       | E13-6101  | Key washer                   |
| 4       | E13-6001  | Drag washer                  |
| 5       | E13-6201  | Eared washer                 |
| 6       | E29-7808  | Spool assembly               |
| 7       | E13-2101  | Click pawl                   |
| 8       | B61-8801  | Click spring                 |
| 9       | 320-5901  | Click retainer               |
| 10      | E39-4001  | Spool washer                 |
| 11      | E36-5301  | Click gear                   |
| 12      | F15-8401  | Main shaft                   |
| 13      | 341-9203  | Rotor nut                    |
| 14      | F22-8102  | Rotor                        |
| 15      | F03-0801  | Bail trip lever              |
| 16      | F15-3104  | Bail trip cover              |
| 17      | E36-4201  | Bail trip cover screw        |
| 18      | B67-9305  | Line roller screw            |
| 19      | F15-2405  | Bail arm                     |
| 20      | F15-2501  | Bail arm screw               |
| 21      | F06-6301  | Line roller collar           |
| 22      | F05-5601  | Ball bearing A               |
| 23      | F05-8901  | Line roller                  |
| 24      | F17-4701  | Bail assembly                |
| 25      | F15-2501  | Bail trip cam screw          |
| 26      | 320-5901  | Bail trip cam screw retainer |
| 27      | 320-5901  | Bail arm screw retainer      |
| 28      | E36-8201  | Bail spring shaft            |
| 29      | E37-2401  | Bail spring                  |
| 30      | F15-2604  | Bail spring cover            |
| 31      | E36-4201  | Bail spring cover screw      |
| 32      | F19-7201  | Oiled washer                 |
| 33      | F15-3301  | Roller clutch                |
| 34      | F21-2501  | Roller clutch retainer       |
| 35      | F15-5101  | Spacing sleeve               |
| 36      | F21-2201  | Bearing retainer screw       |
| 37      | 637-5701  | Ball bearing B               |
| 38      | F15-1002  | Pinion gear                  |
| 39      | F26-4701  | Body assembly                |
| 40      | F15-1201  | Anti-reverse ratchet         |

| Key NO. | Parts No. | Parts Name                     |
|---------|-----------|--------------------------------|
| 41      | F15-1102  | Bearing retainer               |
| 44      | L00-1801  | Anti-reverse pawl screw        |
| 45      | F15-1501  | Anti-reverse pawl              |
| 46      | F15-8301  | Anti-reverse pawl collar       |
| 47      | F15-1601  | Anti-reverse pawl spring       |
| 48      | F17-4301  | Worm shaft                     |
| 49      | F12-2601  | Oscillating slider             |
| 50      | E12-2403  | Oscillating pawl               |
| 51      | E12-4601  | Oscillating pawl bush          |
| 52      | 375-0800  | Oscillating pawl washer        |
| 53      | E11-6801  | Oscillating slider cover       |
| 54      | E15-0203  | Oscillating slider cover screw |
| 55      | 375-4101  | Worm shaft washer              |
| 56      | F05-6901  | Worm shaft collar              |
| 57      | F08-7201  | Shield plate                   |
| 58      | F15-1701  | Pinion collar                  |
| 59      | F15-0701  | Anti-reverse cam spring        |
| 60      | F15-0803  | Anti-reverse lever             |
| 61      | F15-3703  | Water shield                   |
| 62      | F15-3803  | Rear cover                     |
| 63      | E24-8102  | Rear cover screw               |
| 64      | E42-0102  | Drive gear                     |
| 65      | 375-8500  | Drive gear washer              |
| 66      | 637-5701  | Ball bearing B                 |
| 67      | F15-2203  | Side cover                     |
| 68      | E13-0502  | Side cover screw A             |
| 69      | E13-0501  | Side cover screw B             |
| 70      | F16-9301  | Handle collar                  |
| 71      | F30-3701  | Handle screw                   |
| 72      | F15-4402  | Handle screw cap               |
| 73      | F26-4801  | Handle assembly                |
| 74      | F26-3101  | Spacer                         |
| 75      | 375-8507  | Rotor washer                   |
| 76      | F26-8501  | Ball bearing collar            |

**TD10001 SPECIAL PARTS**

|     |          |                |
|-----|----------|----------------|
| 2-9 | F15-8505 | Spool assembly |
| 6   | F15-8605 | Spool assembly |
| 14  | F21-6002 | Rotor          |
| 24  | F15-4501 | Bail assembly  |