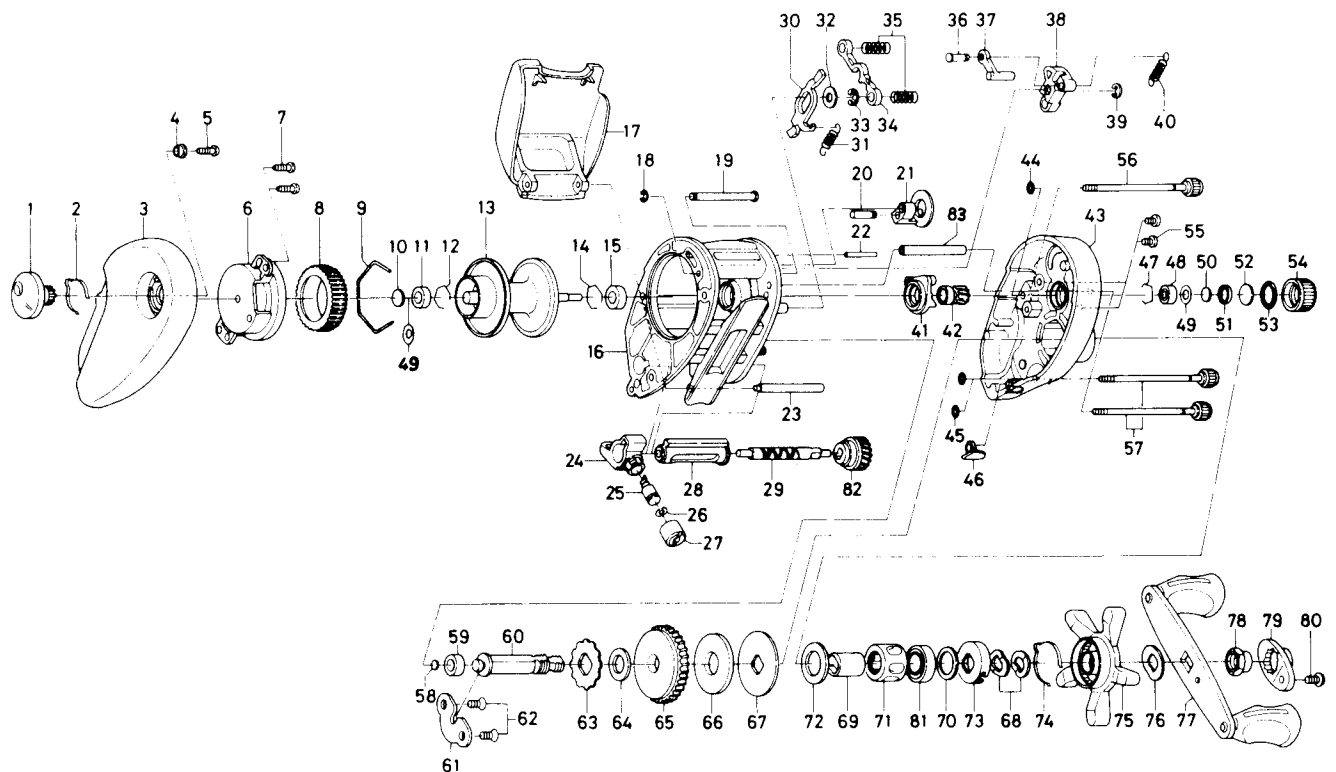


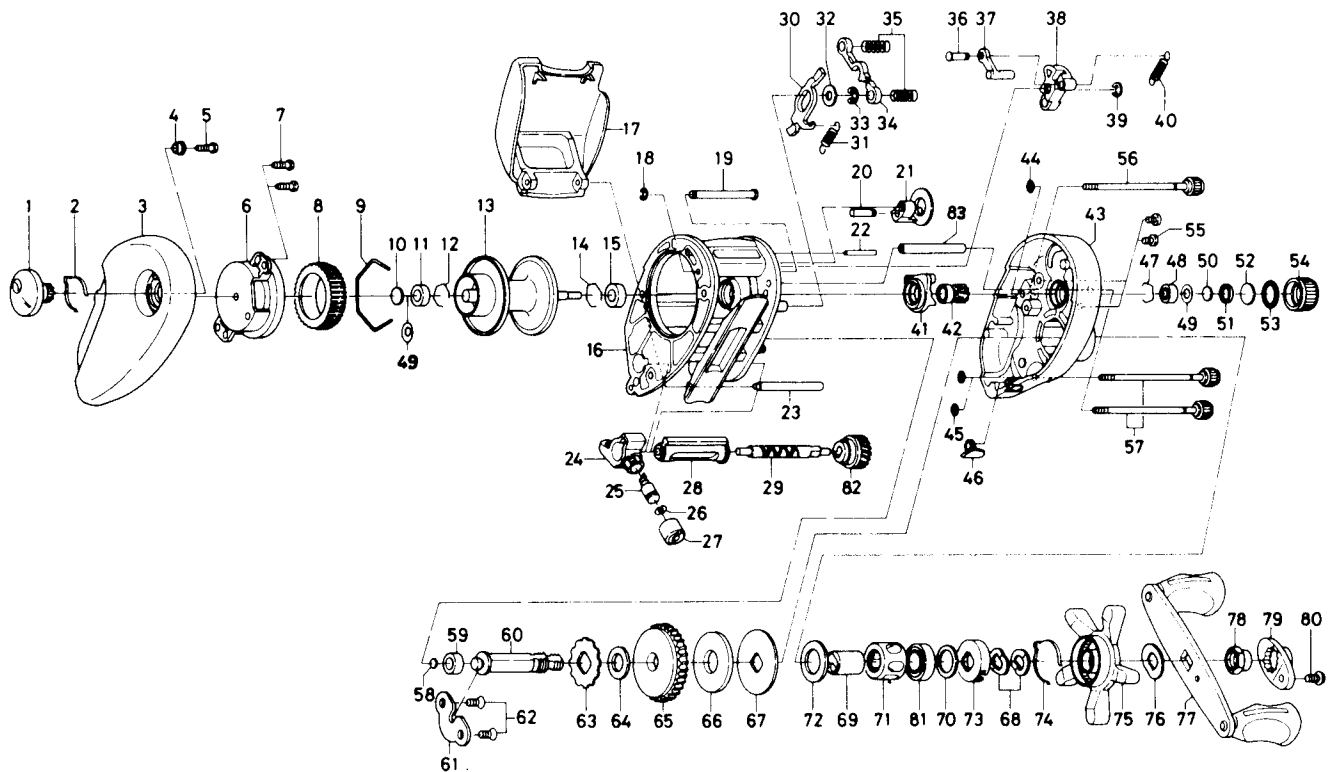
BAITCASTING REEL — TD1Hi-T/TD2Hi-T TOURNAMENT



Key No.	Parts No.	Parts Name
1	F02-9607	Brake adjusting knob
2	F05-1701	Brake click spring
3	F02-9209	Left side plate
4	F02-9801	Brake adjusting knob collar
5	E15-7502	Brake adjusting knob screw
6	F13-5101	Left set plate
7	E15-7502	Left set plate screw
8	B58-2502	Magnet holder
9	B54-3201	Magnet holder ret. ring
10	375-7405	Spacer A
11	B35-8601	Ball bearing A
12	B42-1601	Bearing retainer A
13	F13-6001	Spool assembly
14	B42-1601	Bearing retainer A
15	B35-8601	Ball bearing A
16	F07-4704	Frame assembly
17	E39-3411	Parming plate
18	B86-4101	Stabilizer bar retainer
19	E39-2001	Stabilizer bar A
20	E39-1901	Flipping/casting selector pin
21	F02-6701	Flipping/casting selector
22	E19-6801	Stabilizer bar B
23	F02-9001	Stabilizer bar C
24	E39-3302	Line guide
25	121-4212	Line guide pawl
26	375-4101	Line guide washer
27	342-4802	Pawl cap
28	F03-6001	Level wind guard
29	E24-7102	Worm shaft

Key No.	Parts No.	Parts Name
30	F02-7101	Clutch trip plate
31	E43-0001	Clutch trip plate spring
32	371-6903	Clutch trip plate washer
33	320-1402	Clutch trip plate retainer
34	E30-4301	Yoke
35	E23-6401	Yoke spring
36	E19-7201	Clutch trip plate arm pin
37	E19-7101	Clutch trip plate arm
38	F02-6601	Clutch cam
39	B33-9801	Clutch cam retainer
40	F05-3101	Clutch cam spring
41	E44-3801	Yoke plate
42	E24-9201	Pinion gear
43	F09-6609	Right side plate
44	B85-3101	"O" ring A
45	B85-3101	"O" ring A
46	E16-9502	Line holder
47	E21-9701	Bearing retainer B
48	E08-8001	Ball bearing B
49	E25-6101	Oiled washer A
50	374-9102	Spool adjusting cap meta
51	E23-0501	Spacer B
52	B17-5502	Spacer C
53	171-5201	"O" ring B
54	B85-3401	Cast control cap
55	353-4402	Set plate screw
56	B91-1714	Right side plate screw A
57	B91-1711	Right side plate screw B
58	B12-0201	Drive shaft washer A

BAITCASTING REEL — TD1Hi-T/TD2Hi-T TOURNAMENT



Key No.	Parts No.	Parts Name
59	B35-8601	Ball bearing A
60	F02-7404	Drive shaft
61	E19-9401	Drive shaft retainer
62	B39-5503	Drive shaft retainer screw
63	E32-7701	Anti-reverse ratchet
64	E42-5301	Drive shaft washer B
65	F02-7702	Drive gear
66	F02-7801	Drag washer
67	F06-2501	Key washer
68	150-8901	Drag spring washer
69	F05-3301	Gear shaft collar
70	B55-3801	Oiled washer B
71	E42-1401	Roller clutch
72	E42-5401	Spacing sleeve
73	F02-8201	Click leaf spring holder
74	F03-2401	Click leaf spring
75	F02-8304	Star drag
76	150-9001	Friction washer
77	F15-6701	Handle assembly
78	341-5804	Handle nut

Key No.	Parts No.	Parts Name
79	F02-8801	Handle nut plate
80	351-1803	Handle nut plate screw
81	F05-5501	Ball bearing C
82	B99-2001	Worm shaft gear
83	E42-5901	Stabilizer bar D

TD2Hi-TOURNAMENT Special Parts

3	F02-9210	Left side plate
13	F13-6101	Spool assembly
16	F07-4804	Frame assembly
17	F02-7911	Parning plate
19	F02-7301	Stabilizer bar A
23	F02-7601	Stabilizer bar C
28	F02-7501	Level wind guard
29	E28-4603	Worm shaft
43	F09-6610	Right side plate
56	B91-1715	Right side plate screw A
57	B91-1713	Right side plate screw B
83	E42-6001	Stabilizer bar D