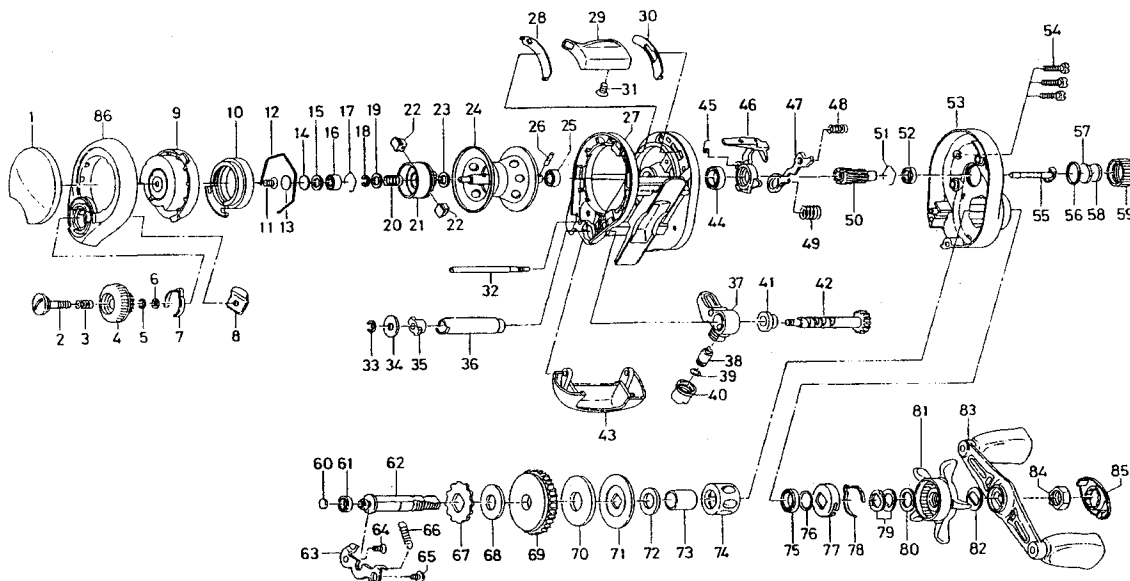


# TEAM DAIWA-X103HVA



Key No.	Parts No.	Parts Name	Key No.	Parts No.	Parts Name
1	F57-7501	L/S PLT A	48	F58-8001	YOKE SPRING A
2	F57-7901	SET PLT SCREW	49	E16-7101	YOKE SPRING B
3	E16-7101	SET PLT SPRING	50	F57-5701	PINION GEAR
4	F57-7801	BRAKE ADJ KNOB	51	E21-9701	BEARING RET B
5	B33-9801	BRAKE DIAL RET A	52	F05-5601	BALL BEARING C
6	F63-7701	BRAKE DIAL WASHER	53	F76-1301	R/S PLT
7	F05-1701	BRAKE CLICK SPRING	54	351-1001	R/S PLT SCREW
8	F61-3401	BRAKE DIAL RET B	55	F74-3001	PINION SHAFT
9	F71-7802	LEFT SET PLT	56	171-5201	O RING
10	F71-7702	MAGNET HOLDER	57	B17-5401	SPOOL ADJ CAP METAL
11	E29-3001	LEFT SET PLT SCREW	58	B17-5503	SPACER F
12	B54-3201	MAGNET HOLDER RET RING	59	F57-4401	CAST CONTROL CAP
13	375-7404	SPACER A	60	F57-5601	DRIVE SHAFT WASHER A
14	375-7411	SPACER B	61	F05-5601	BALL BEARING D
15	F57-4303	SPACER C	62	F65-4901	DRIVE SHAFT
16	F57-7701	BALL BEARING A	63	F58-2201	DRIVE SHAFT RET
17	E21-9701	BEARING RET A	64	F21-1101	DRIVE SHAFT RET SCREW A
18-26	Z01-1196	SPOOL	65	353-8301	DRIVE SHAFT RET SCREW B
27	F76-1405	FRAME	66	F62-0401	CLUTCH TRIP PLT SPRING
28	F76-1601	SPACER D	67	E32-7701	A/R RATCHET
29	F57-5503	CLUTCH LEVER	68	E42-5301	DRIVE SHAFT WASHER B
30	F76-1501	SPACER E	69	F58-2401	DRIVE GEAR
31	F21-1102	CLUTCH LEVER SCREW	70	F02-7801	DRIVE GEAR WASHER
32	F57-3401	STABILIZER BAR	71	F06-2501	KEY WASHER
33	320-5901	WORM SHAFT RET	72	E42-5401	DRAG WASHER A
34	F65-5501	WORM SHAFT WASHER	73	F60-2901	GEAR SHAFT COLLAR
35	B71-5601	WORM SHAFT HOLDER A	74	F57-3901	ROLLER CLUTCH
36	F57-5801	LEVEL WIND GUARD	75	F58-2501	BALL BEARING E
37	F57-5901	LINE GUIDE	76	B55-3801	DRAG WASHER B
38	121-4212	LINE GUIDE PAWL	77	F02-8201	CLICK LEAF SPRING HOLDER
39	375-4101	LINE GUIDE PAWL WASHER	78	F03-2401	CLICK LEAF SPRING
40	342-4801	PAWL CAP	79	150-8901	DRAG SPRING WASHER
41	E19-9501	WORM SHAFT HOLDER B	80	373-7810	SPACING SLEEVE
42	F57-6201	WORM SHAFT	81	F57-6501	STAR DRAG
43	F57-5203	FRONT PLT	82	F57-6601	FRICTION WASHER
44	B86-1701	BALL BEARING B	83	F65-5101	HANDLE
45	F56-1901	CLUTCH CAM SPRING	84	B43-3601	HANDLE NUT
46	F57-5301	CLUTCH CAM	85	F57-7201	HANDLE NUT RET
47	F58-2301	YOKE	86	F57-7402	L/S PLT B