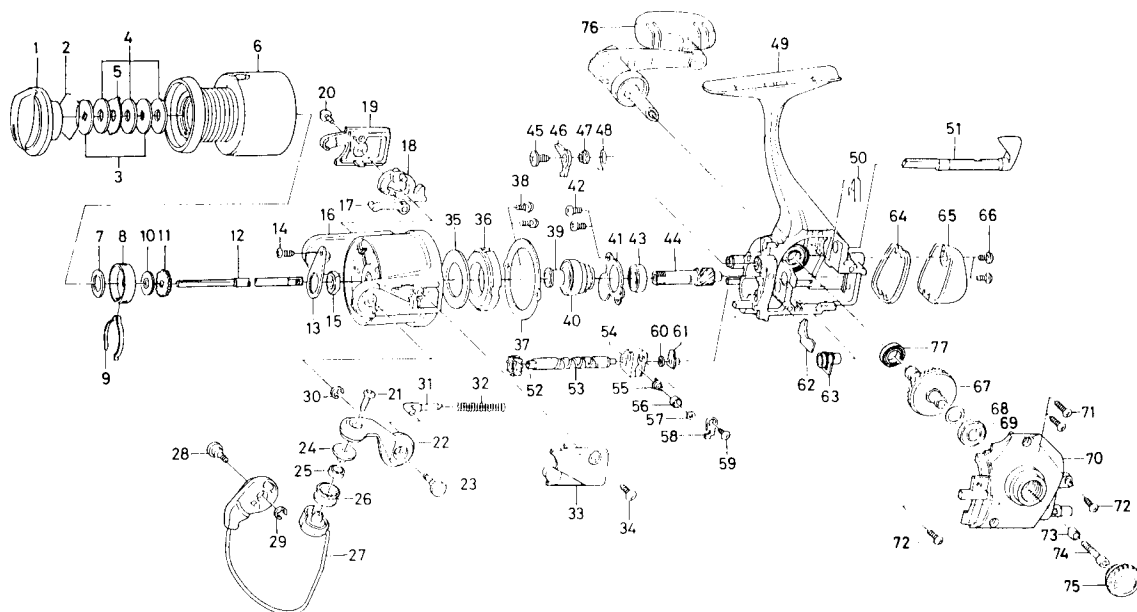


# SPINNING REEL TEAM DAIWA-X3500i/4000i



Key NO.	Parts No.	Parts Name	Key NO.	Parts No.	Parts Name
2-6	F18-6506	Spool assembly	42	B83-4402	Bearing retainer screw
1	F20-4604	Drag knob	43	635-4801	Ball bearing B
2	170-4101	Drag washer retainer	44	F26-5101	Pinion gear
3	E27-7801	Key washer	45	L00-1801	Anti-reverse pawl screw
4	B36-0204	Drag washer	46	F18-1801	Anti-reverse pawl
5	372-3832	Eared washer	47	F18-1701	Anti-reverse pawl collar
6	F18-6606	Spool assembly	48	F37-4501	Anti-reverse pawl spring
7	E39-7901	Spool washer	49	F26-5002	Body assembly
8	E12-2302	Click leaf spring holder	50	E32-7801	Anti-reverse cam spring
9	B74-7702	Spool click leaf spring	51	F18-1003	Anti-reverse lever
10	375-4202	Main shaft washer	52	E42-0501	Worm shaft gear
11	E41-3101	Click gear	53	F30-7802	Worm shaft
12	F18-5801	Main shaft	54	E37-6301	Oscillating slider
13	F18-9601	Rotor nut holding plate	55	E19-1202	Oscillating pawl
14	B93-3001	Rotor nut holding plate screw	56	E19-1301	Oscillating pawl bush
15	B10-5701	Rotor nut	57	375-0801	Oscillating pawl washer
16	F30-8002	Rotor	58	E37-6901	Oscillating slider cover
17	F08-0702	Bail trip plate	59	E40-1501	Oscillating slider cover screw
18	F01-4401	Bail trip lever	60	B53-6102	Worm shaft washer
19	F18-2807	Bail trip cover	61	F05-6901	Worm shaft collar
20	E33-0403	Bail trip cover screw	62	E48-2801	Shield plate
21	B67-9306	Line roller screw	63	E48-2701	Pinion collar
22	F17-6505	Bail arm	64	F18-3405	Water shield
23	F15-2501	Bail arm screw	65	F18-3505	Rearcover
24	F06-6301	Line roller collar	66	E36-4203	Rear cover screw
25	F05-5601	Ball bearing A	67	E41-8603	Drive gear
26	F30-5101	Line roller	68	373-7802	Drive gear washer
27	F33-5601	Bail assembly	69	E15-4001	Ball bearing C
28	F15-2501	Bail trip cam screw	70	F18-2303	Side cover
29	320-5901	Bail trip cam screw retainer	71	E15-8603	Side cover screw A
30	320-5901	Bail arm screw retainer	72	E15-7502	Side cover screw B
31	F24-6801	Bail spring shaft	73	F18-3701	Handle collar
32	E39-0601	Bail spring	74	F38-7101	Handle screw
33	F18-2507	Bail spring cover	75	F33-5901	Handle screw cap
34	E24-8103	Bail spring cover screw	76	F33-5702	Handle assembly
35	F19-7302	Oiled washer	77	B86-1701	Ball bearing D
36	F18-2901	Roller clutch			
37	F18-3001	Roller clutch retainer			
38	E15-7502	Roller clutch retainer screw	<b>X4000i Special parts</b>		
39	F18-1301	Spacing sleeve	2-6	F18-6806	Spool assembly
40	F18-1401	Anti-reverse ratchet	6	F18-6906	Spool assembly
41	F18-1201	Bearing retainer	16	F30-9402	Rotor
			27	F33-6001	Bail assembly