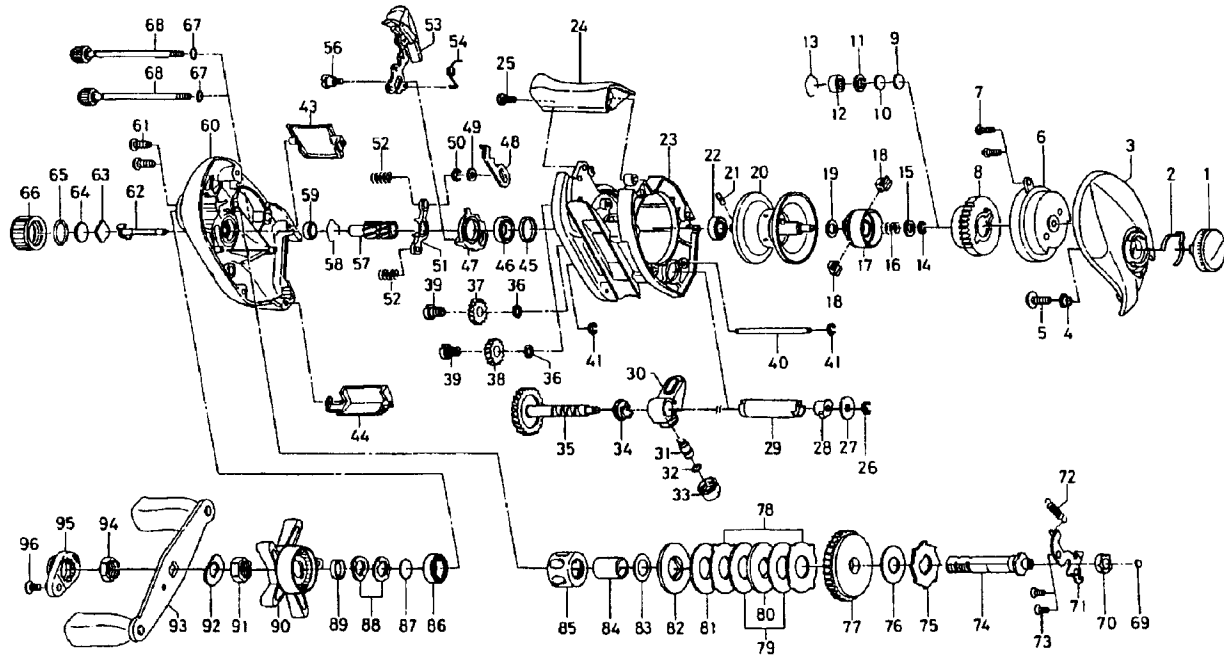


BAITCASTING REEL

TEAM DAIWA-S103HSDL



Key No.	Parts No.	Parts Name	Key No.	Parts No.	Parts Name
1	G11-0802	BRAKE ADJ KNOB	53	F86-5301	CLUTCH LEVER
2	F05-1701	BRAKE CLICK SPRING	54	F94-5001	CLUTCH LEVER SPRING
3	G11-0202	R/S PLT	56	F83-5301	CLUTCH LEVER SCREW
4	F02-9801	BRAKE ADJ KNOB COLLAR	57	F84-5401	PINION GEAR
5	G11-5001	SET PLT SCREW	58	E21-9701	BEARING RET B
6	G11-0401	RIGHT SET PLT	59	F05-5601	BALL BEARING C
7	351-0905	RIGHT SET PLT SCREW	60	G18-7401	L/S PLT
8	G11-0601	MAGNET HOLDER	61	351-1107	L/S PLT SCREW A
9	375-7404	SPACER A	62	F80-0501	PINION SHAFT
10	375-7411	SPACER B	63	B17-5401	SPOOL ADJ CAP METAL
11	F57-4303	SPACER C	64	B17-5503	SPACER D
12	E08-8003	BALL BEARING A	65	171-5201	O RING A
13	E21-9701	BEARING RET A	66	F74-6401	CAST CONTROL CAP
14-22	Z01-2428	SPOOL	67	B85-3101	O RING B
23	G10-9902	FRAME	68	B91-1733	L/S PLT SCREW B
24	F91-7005	REAR COVER	69	F64-7201	DRIVE SHAFT WASHER A
25	351-1101	REAR COVER SCREW	70	B55-0301	BUSHING
26	320-5901	WORM SHAFT RET	71	F83-5701	DRIVE SHAFT RET
27	F65-5501	WORM SHAFT WASHER	72	F68-9501	CLUTCH TRIP PLT SPRING
28	B71-5601	WORM SHAFT HOLDER A	73	F21-1101	DRIVE SHAFT RET SCREW
29	F90-5001	LEVEL WIND GUARD	74	G18-7501	DRIVE SHAFT
30	F96-7701	LINE GUIDE PAWL HOLDER	75	F76-1701	A/R RATCHET
31	121-4212	LINE GUIDE PAWL	76	F19-0101	DRIVE SHAFT WASHER B
32	F95-0200	LINE GUIDE WASHER	77	F83-7001	DRIVE GEAR
33	F40-2803	PAWL CAP	78	F79-6101	EARED WASHER
34	F93-2201	WORM SHAFT HOLDER B	79	F79-6201	DRAG WASHER A
35	F93-3203	WORM SHAFT	80	F79-6301	KEY WASHER A
36	B41-1701	DRIVE GEAR WASHER	81	F96-7801	DRAG WASHER B
37	F95-8401	DRIVE GEAR A	82	F79-6401	KEY WASHER B
38	F95-8501	DRIVE GEAR B	83	E42-5401	SPACING SLEEVE
39	F92-3301	DRIVE GEAR SCREW	84	F60-2901	GEAR SHAFT COLLAR
40	F97-3201	STABILIZER BAR	85	F98-6401	ROLLER CLUTCH
41	B86-4101	STABILIZER BAR RET	86	B86-1702	BALL BEARING D
43	G10-9703	PALMING PLT	87	B55-3801	DRIVE SHAFT WASHER C
44	G10-9602	FRONT PLT	88	150-8901	DRAG SPRING WASHER
45	G10-9801	BALL BEARING COLLAR	89	G18-9401	HANDLE COLLAR
46	B86-1702	BALL BEARING B	90	F40-3202	STAR DRAG
47	F92-3901	CLUTCH CAM	91	B43-3602	DRAG NUT
48	F83-4801	CLUTCH TRIP PLT	92	150-9001	FRICTION WASHER
49	F77-4603	CLUTCH TRIP PLT WASHER	93	F74-6101	HANDLE
50	320-5901	CLUTCH TRIP PLT RET	94	B43-3602	HANDLE NUT
51	F83-5801	YOKE	95	F05-4402	HANDLE NUT RET
52	F58-8001	YOKE SPRING	96	351-1803	HANDLE NUT PLT SCREW