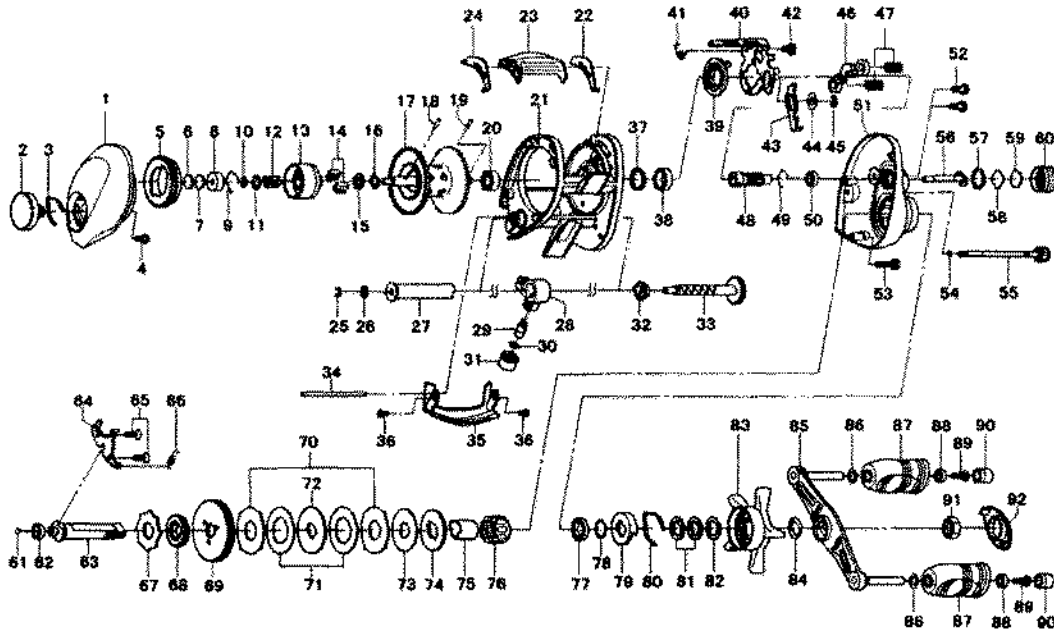


**TEAM DAIWA – ADVANTAGE 153HST**



Key No.	Parts No.	Parts Name	Key No.	Parts No.	Parts Name
1	G54-5503	L/S PLT	52	G04-0801	R/S PLT SCREW A
2	F82-1210	BRAKE ADJ KNOB	53	G47-3501	R/S PLT SCREW B
3	F05-1701	BRAKE CLICK SPRING	54	B85-3101	O RING A
4	F21-2201	SET PLT SCREW	55	B91-1746	R/S PLT SCREW C
5	G54-5701	MAGNET HOLDER	56	F80-0501	PINION SHAFT
6	375-7404	SPACER A	57	171-5201	O RING B
7	375-7411	SPACER B	58	B17-5401	SPOOL ADJ CAP METAL
8	637-4601	BALL BEARING A	59	B17-5503	RUBBER WASHER
9	F03-2201	BEARING RET A	60	F57-4402	CAST CONTROL CAP
10-20	Z01-3327	SPOOL	61	G35-7506	DRIVE SHAFT WASHER
21	G54-3006	FRAME	62	F05-5601	BALL BEARING D
22	G54-3401	CLUTCH LEVER PLT A	63	G54-3901	DRIVE SHAFT
23	G54-3601	CLUTCH LEVER	64	G54-4001	DRIVE SHAFT RET
24	G54-3501	CLUTCH LEVER PLT B	65	E13-4508	DRIVE SHAFT RET SCREW
25	320-5901	WORM SHAFT RET	66	G01-0201	CLUTCH TRIP PLT SPRING
26	373-1306	WORM SHAFT WASHER	67	F76-1701	A/R RATCHET
27	G54-4801	LEVEL WIND GUARD	68	G00-1501	DRIVE GEAR A
28	G54-4301	LINE GUIDE	69	G54-4901	DRIVE GEAR B
29	121-4212	LINE GUIDE PAWL	70	F79-6101	EARED WASHER
30	373-1303	LINE GUIDE WASHER	71	G42-8501	DRAG WASHER
31	F40-2801	PAWL CAP	72	F79-6301	KEY WASHER
32	G12-8201	WORM SHAFT COLLAR	73	G45-5801	DRAG WASHER B
33	G54-4601	WORM SHAFT	74	G14-1801	KEY WASHER B
34	G54-5401	STABILIZER BAR	75	G54-5001	GEAR SHAFT COLLAR
35	G54-5303	FRONT PLT	76	F99-9803	ROLLER CLUTCH
36	B36-0401	FRONT PLT SCREW	77	F58-2501	BALL BEARING D
37	F83-4701	BALL BEARING COLLAR	78	B55-3801	BEARING WASHER
38	B86-1701	BALL BEARING B	79	F02-8201	CLICK LEAF SPRING HOLDER
39	F79-3501	CLUTCH CAM A	80	F03-2401	CLICK LEAF SPRING HOLDER
40	G54-3701	CLUTCH CAM B	81	150-8901	DRAG SPRING WASHER
41	G54-4101	CLUTCH CAM SPRING	82	373-7810	SPACING SLEEVE
42	G00-9701	CLUTCH CAM SCREW	83	F57-6506	STAR DRAG
43	G54-3801	CLUTCH TRIP PLT	84	F57-6601	FRICTION WASHER
44	371-6907	CLUTCH TRIP PLT WASHER	85	G54-5101	HANDLE
45	320-1402	CLUTCH TRIP PLT RET	86	F30-6400	HANDLE KNOB WASHER
46	F79-4801	YOKE	87	G54-5201	HANDLE KNOB
47	G59-7301	YOKE SPRING	88	F28-3101	BALL BEARING F
48	G54-4201	PINION GEAR	89	B67-9308	HANDLE KNOB SCREW
49	E21-9701	BEARING RET B	90	G55-1901	HANDLE KNOB CAP
50	G46-6202	BALL BEARING C	91	F83-7402	HANDLE NUT
51	G54-2704	R/S PLT	92	F57-7202	HANDLE NUT PLT