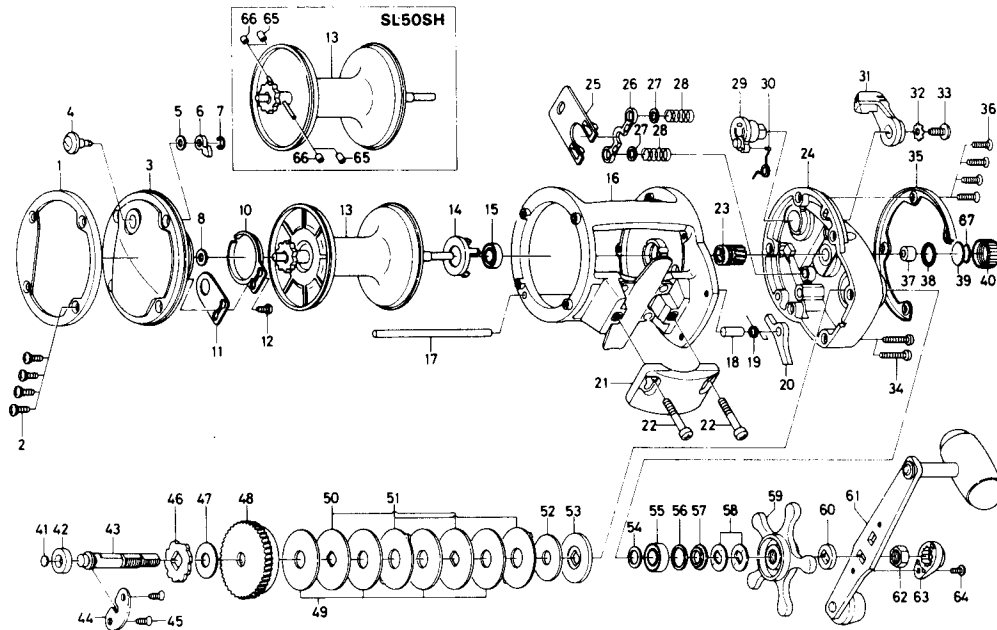


MULTIPLYING REEL SEALINE — SG50H, SL50SH



Key

| Key No. | Part No. | Part Name | Price |
|---------|----------|--------------------------|-------|
| 1 | F09-9401 | Left side outer ring | 9.00 |
| 2 | F09-3601 | Left side plate screw | .50 |
| 3 | F09-8601 | Left side plate | 14.15 |
| 4 | E36-1301 | Click button | 2.50 |
| 5 | 373-1600 | Click pawl washer | .60 |
| 6 | 030-6222 | Click pawl | 1.30 |
| 7 | 320-1402 | Click pawl retainer | .40 |
| 8 | F13-2601 | Spacer A | .50 |
| 10 | 160-7922 | Click spring | 2.75 |
| 11 | F13-1801 | Click spring retainer | .95 |
| 12 | B83-4402 | Click spring screw | .50 |
| 13 | F09-8801 | Spool assembly | 23.00 |
| 14 | F09-7801 | Bearing retainer | .75 |
| 15 | 637-5701 | Ball bearing A | 7.65 |
| 16 | F09-7401 | Frame assembly | 31.00 |
| 17 | F09-9301 | Stabilizer bar | 2.80 |
| 18 | F09-8201 | Anti-reverse pawl pin | 1.40 |
| 19 | E31-6501 | Anti-reverse pawl spring | .65 |
| 20 | B29-4301 | Anti-reverse pawl | 2.30 |
| 21 | E31-8301 | Rod clamp | 3.95 |
| 22 | E31-8401 | Clamp bolt | 1.30 |
| 23 | F09-8001 | Pinion gear | 14.50 |
| 24 | F09-6901 | Right side plate | 13.80 |
| 25 | F09-7901 | Yoke plate | 1.90 |
| 26 | E25-2101 | Yoke | 1.40 |
| 27 | E03-7704 | Yoke washer | .50 |
| 28 | E33-5301 | Yoke spring | .50 |
| 29 | F09-7301 | Clutch cam | 1.45 |
| 30 | 144-6403 | Clutch spring | .70 |
| 31 | E42-6802 | Clutch lever | 2.25 |
| 32 | 160-8001 | Clutch lever lock washer | .50 |
| 33 | E00-7602 | Clutch lever screw | .55 |
| 34 | E04-3302 | Right side plate screw A | .70 |
| 35 | F09-7201 | Right side outer ring | 7.50 |
| 36 | F09-3601 | Right side plate screw B | .50 |
| 37 | 636-3101 | Bushing A | 2.15 |
| 38 | B05-5201 | "O" ring | .65 |
| 39 | 375-7501 | Spacer B | .60 |

Key

| Key No. | Part No. | Part Name | Price |
|---------|----------|----------------------------|-------|
| 40 | E31-5401 | Cast control cap | 3.20 |
| 41 | 374-9102 | Drive shaft washer A | .50 |
| 42 | B73-8001 | Bushing B | 2.00 |
| 43 | F09-8301 | Drive shaft | 12.80 |
| 44 | F09-8401 | Drive shaft retainer | 1.60 |
| 45 | E31-6701 | Drive shaft retainer screw | .45 |
| 46 | E25-2903 | Anti-reverse ratchet | 2.25 |
| 47 | 374-6605 | Drive shaft washer B | .50 |
| 48 | F09-8501 | Drive gear | 19.85 |
| 49 | E31-6902 | Drag washer A | 2.95 |
| 50 | E31-7001 | Key washer A | .95 |
| 51 | E31-7101 | Eared washer | 1.30 |
| 52 | E32-6502 | Drag washer B | 2.30 |
| 53 | E31-7201 | Key washer B | 1.25 |
| 54 | 373-7807 | Bearing washer A | .55 |
| 55 | B62-8601 | Ball bearing B | 8.35 |
| 56 | B68-4402 | Bearing washer B | .65 |
| 57 | E25-3301 | Ball bearing collar | .90 |
| 58 | E25-3501 | Drag spring washer | .80 |
| 59 | E25-3602 | Star drag | 6.60 |
| 60 | E25-3901 | Spacing sleeve | .95 |
| 61 | E17-5503 | Handle assembly | 15.20 |
| 62 | B86-2101 | Handle nut | 1.25 |
| 63 | E44-0001 | Handle nut plate | .70 |
| 64 | 352-2503 | Handle nut plate screw | .45 |
| 67 | B17-5503 | Spacer C | .55 |

SL50SH Special Parts:

| | | | |
|----|----------|------------------|-------|
| 3 | F11-2101 | Left side plate | 23.15 |
| 13 | F11-2201 | Spool assembly | 49.00 |
| 16 | F12-4901 | Frame assembly | 32.60 |
| 23 | F11-1701 | Pinion gear | 14.15 |
| 24 | F09-6902 | Right side plate | 14.20 |
| 42 | 637-5701 | Ball bearing C | 7.65 |
| 48 | F11-2001 | Drive gear | 23.80 |
| 65 | B35-2701 | Brake collar A | .75 |
| 66 | B35-2801 | Brake collar B | .50 |