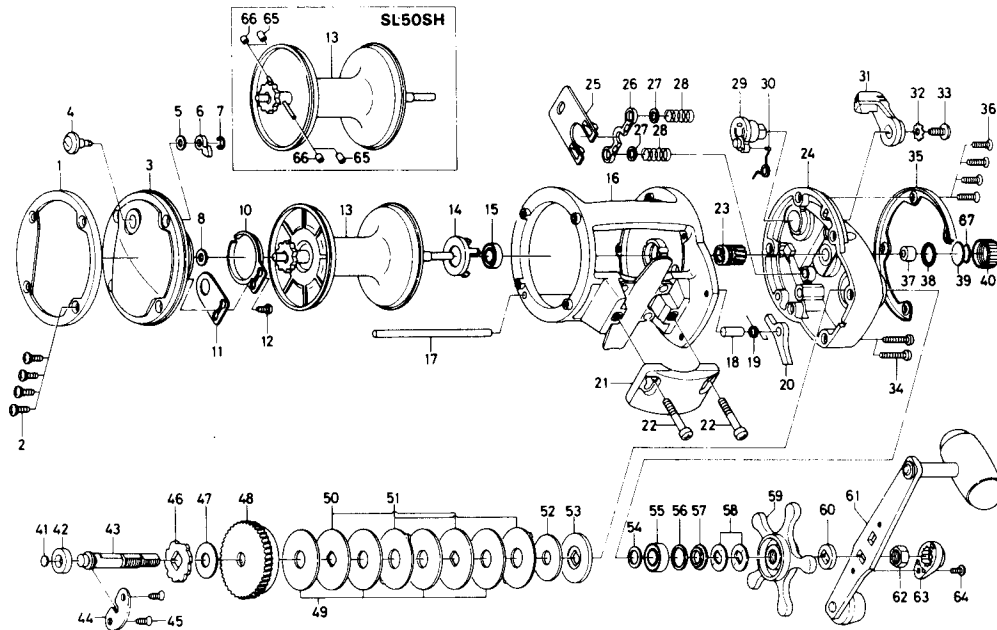


MULTIPLYING REEL SEALINE — SG50H, SL50SH



Key

Key No.	Part No.	Part Name	Price
1	F09-9401	Left side outer ring	9.00
2	F09-3601	Left side plate screw	.50
3	F09-8601	Left side plate	14.15
4	E36-1301	Click button	2.50
5	373-1600	Click pawl washer	.60
6	030-6222	Click pawl	1.30
7	320-1402	Click pawl retainer	.40
8	F13-2601	Spacer A	.50
10	160-7922	Click spring	2.75
11	F13-1801	Click spring retainer	.95
12	B83-4402	Click spring screw	.50
13	F09-8801	Spool assembly	23.00
14	F09-7801	Bearing retainer	.75
15	637-5701	Ball bearing A	7.65
16	F09-7401	Frame assembly	31.00
17	F09-9301	Stabilizer bar	2.80
18	F09-8201	Anti-reverse pawl pin	1.40
19	E31-6501	Anti-reverse pawl spring	.65
20	B29-4301	Anti-reverse pawl	2.30
21	E31-8301	Rod clamp	3.95
22	E31-8401	Clamp bolt	1.30
23	F09-8001	Pinion gear	14.50
24	F09-6901	Right side plate	13.80
25	F09-7901	Yoke plate	1.90
26	E25-2101	Yoke	1.40
27	E03-7704	Yoke washer	.50
28	E33-5301	Yoke spring	.50
29	F09-7301	Clutch cam	1.45
30	144-6403	Clutch spring	.70
31	E42-6802	Clutch lever	2.25
32	160-8001	Clutch lever lock washer	.50
33	E00-7602	Clutch lever screw	.55
34	E04-3302	Right side plate screw A	.70
35	F09-7201	Right side outer ring	7.50
36	F09-3601	Right side plate screw B	.50
37	636-3101	Bushing A	2.15
38	B05-5201	"O" ring	.65
39	375-7501	Spacer B	.60

Key

Key No.	Part No.	Part Name	Price
40	E31-5401	Cast control cap	3.20
41	374-9102	Drive shaft washer A	.50
42	B73-8001	Bushing B	2.00
43	F09-8301	Drive shaft	12.80
44	F09-8401	Drive shaft retainer	1.60
45	E31-6701	Drive shaft retainer screw	.45
46	E25-2903	Anti-reverse ratchet	2.25
47	374-6605	Drive shaft washer B	.50
48	F09-8501	Drive gear	19.85
49	E31-6902	Drag washer A	2.95
50	E31-7001	Key washer A	.95
51	E31-7101	Eared washer	1.30
52	E32-6502	Drag washer B	2.30
53	E31-7201	Key washer B	1.25
54	373-7807	Bearing washer A	.55
55	B62-8601	Ball bearing B	8.35
56	B68-4402	Bearing washer B	.65
57	E25-3301	Ball bearing collar	.90
58	E25-3501	Drag spring washer	.80
59	E25-3602	Star drag	6.60
60	E25-3901	Spacing sleeve	.95
61	E17-5503	Handle assembly	15.20
62	B86-2101	Handle nut	1.25
63	E44-0001	Handle nut plate	.70
64	352-2503	Handle nut plate screw	.45
67	B17-5503	Spacer C	.55

SL50SH Special Parts:

3	F11-2101	Left side plate	23.15
13	F11-2201	Spool assembly	49.00
16	F12-4901	Frame assembly	32.60
23	F11-1701	Pinion gear	14.15
24	F09-6902	Right side plate	14.20
42	637-5701	Ball bearing C	7.65
48	F11-2001	Drive gear	23.80
65	B35-2701	Brake collar A	.75
66	B35-2801	Brake collar B	.50