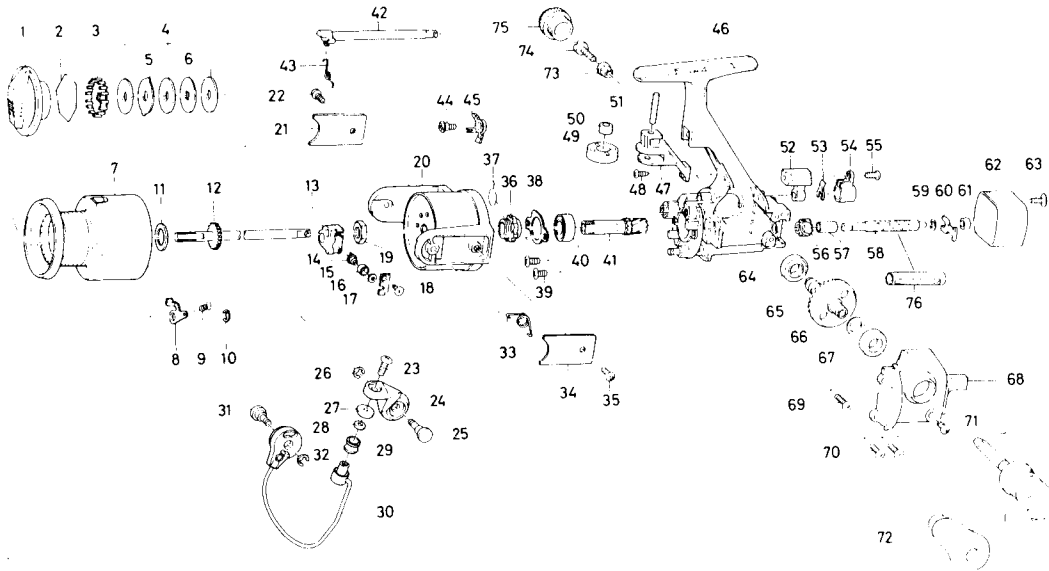


SPINNING REEL SS700



Key No. 2-7 E20-3101

Spool Assembly

Key No.	Parts No.	Parts Name
1	E13-2202	Drag knob
2	170-4511	Drag washer retainer
3	E13-6301	Drag knob click plate
4	E13-6001	Drag washer
5	E13-6201	Eared washer
6	E13-6102	Key washer
7	E13-1904	Spool
8	E13-2101	Click pawl
9	B61-8801	Click spring
10	320-5901	Click retainer
11	E13-5901	Spool washer
12	E13-1001	Main shaft assembly
13	E11-5201	Oscillating slider
14	E12-2402	Oscillating pawl
15	E12-4601	Oscillating pawl bush
16	375-0800	Oscillating pawl washer
17	E11-6801	Oscillating slider cover
18	E15-0202	Oscillating slider cover screw
19	341-9203	Rotor nut
20	E13-0602	Rotor assembly
21	E13-0301	Bail trip cover
22	B93-3002	Bail trip cover screw
23	B67-9303	Line roller screw
24	B73-1501	Bail arm
25	E11-6101	Bail arm screw
26	320-5901	Bail arm screw retainer
27	B97-9801	Line roller collar
28	B55-4301	Line roller washer
29	E04-4201	Line roller
30	E13-0802	Bail
31	E11-6101	Bail trip cam screw
32	320-5901	Bail trip cam screw retainer
33	E13-0701	Bail spring
34	E13-0301	Bail spring cover
35	B93-3002	Bail spring cover screw
36	B61-8001	Anti-reverse ratchet
37	145-0501	Anti-reverse pawl spring
38	B45-6401	Bearing retainer

Key No.	Parts No.	Parts Name
39	B83-4402	Bearing retainer screw
40	637-5701	Ball bearing A
41	E12-9501	Pinion gear
42	B61-7502	Anti-reverse cam
43	E14-6702	Anti-reverse cam spring
44	E09-4401	Anti-reverse pawl screw
45	B90-3002	Anti-reverse pawl
46	E20-1202	Body
47	E12-9401	Bail kick knock
48	E02-7401	Bail kick knock screw
49	E11-4602	Bail kick roller
50	E11-4701	Bail kick roller collar
51	E11-4801	Bail kick roller pin
52	541-5406	Anti-reverse lever
53	321-0101	Anti-reverse lever retainer
54	130-6801	Anti-reverse lever cover
55	353-4402	Anti-reverse lever screw
56	E11-5501	Worm shaft gear
57	E12-2101	Worm shaft bush
58	E13-0101	Worm shaft
59	375-4100	Worm shaft washer
60	E11-5601	Worm shaft retainer
61	E12-2201	Worm shaft collar
62	E13-1402	Rear cover
63	B84-2101	Rear cover screw
64	B18-1601	Ball bearing B
65	E13-0201	Drive gear
66	375-8500	Drive gear washer
67	637-5701	Ball bearing B
68	E12-1102	Side cover
69	E13-0401	Side cover screw A
70	E13-0501	Side cover screw B
71	E11-9601	Side cover screw C
72	E15-3701	Handle assembly
73	501-8501	Handle collar
74	363-8511	Handle screw
75	B03-4806	Handle screw cap
76	E15-0501	Worm shield cover