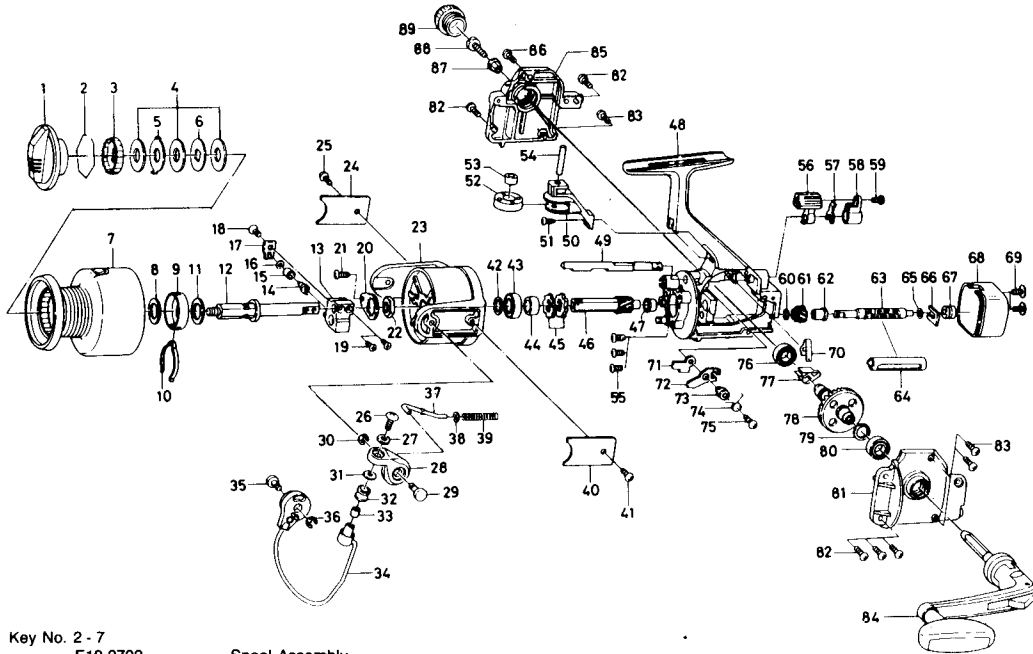


## SPINNING REEL SS1600



Key No. 2 - 7  
E19-2702

Spool Assembly

Key No.	Parts No.	Parts Name
1	E20-0902	Drag knob
2	B54-3202	Drag washer retainer
3	E12-2801	Drag knob click plate
4	B36-0204	Drag washer
5	E15-0101	Eared washer
6	B65-2302	Key washer
7	E19-2802	Spool <b>→ E19-2702</b>
8	E14-6503	Spool washer
9	E12-2301	Click leaf spring holder
10	B74-7702	Spool click leaf spring
11	371-2800	Main shaft washer
12	E22-8001	Main shaft assembly
13	E19-0601	Oscillating slider
14	E19-1201	Oscillating pawl
15	E19-1301	Oscillating pawl bush
16	375-0800	Oscillating pawl washer
17	E18-7401	Oscillating slider cover
18	352-0901	Oscillating slider cover screw
19	351-0311	Oscillating block screw
20	B66-2601	Rotor nut holding plate
21	6-B93-3001	Rotor nut holding plate screw
22	6-340-6604	Rotor nut
23	6-E19-2002	Rotor assembly
24	6-E19-2101	Bail trip cover
25	6-B83-4401	Bail trip cover screw
26	353-8203	Line roller screw
27	375-1001	Lock washer
28	E18-8401	Bail arm
29	E12-5001	Bail arm screw
30	320-5901	Bail arm screw retainer
31	3-373-4501	Line roller collar
32	3-E22-5001	Line roller
33	6-B41-3001	Line roller bushing
34	6-E22-5802	Bail
35	6-E12-5302	Bail trip cam screw
36	6-320-5901	Bail trip cam screw retainer
37	6-E12-4701	Bail spring shaft
38	E11-5901	Bail spring washer
39	E12-4801	Bail spring
40	E19-2101	Bail spring cover
41	B83-4401	Bail spring cover screw
42	373-7807	Ball bearing retaining washer
43	B62-86C1	Ball bearing A
44	B63-0401	Spacing sleeve

Key No.

Parts No.

Parts Name

45	E20-0801	Anti-reverse ratchet
46	E19-0501	Pinion gear
47	B43-5701	Pinion holder
48	E19-0102	Body
49	E19-0401	Anti-reverse cam
50	E19-0201	Bail kick knock
51	E02-7401	Bail kick knock screw
52	E11-4602	Bail kick roller
53	E11-4701	Bail kick roller collar
54	E11-4801	Bail kick roller pin
55	E03-7801	Bearing retainer screw
56	B96-5204	Anti-reverse lever
57	321-0101	Anti-reverse lever retainer
58	130-6801	Anti-reverse lever cover
59	353-4402	Anti-reverse lever screw
60	320-5901	Worm shaft gear retainer
61	E19-1001	Worm shaft gear
62	E19-0901	Worm shaft bush
63	E19-0801	Worm shaft
64	E19-0701	Worm shield cover
65	373-1300	Worm shaft washer
66	E18-7101	Worm shaft retainer
67	E19-1101	Worm shaft collar
68	E19-1803	Rear cover
69	351-7704	Rear cover screw
70	B58-8601	Anti-reverse cam spring
71	B96-5301	Anti-reverse pawl plate
72	E19-0301	Anti-reverse pawl
73	B96-5501	Anti-reverse pawl collar
74	B96-5601	Anti-reverse pawl spring A
75	B00-9701	Anti-reverse pawl spring B
76	637-5701	Ball bearing B
77	E11-4102	Anti-reverse pawl spring B
78	E19-1601	Drive gear
79	375-8500	Drive gear washer
80	637-5701	Ball bearing B
81	E19-1703	Left side cover
82	E13-0501	Side cover screw A
83	E11-9601	Side cover screw B
84	E21-8801	Handle assembly
85	E19-1403	Right side cover
86	E13-0502	Side cover screw C
87	501-8501	Handle collar
88	363-8511	Handle screw
89	B22-4501	Handle screw cap