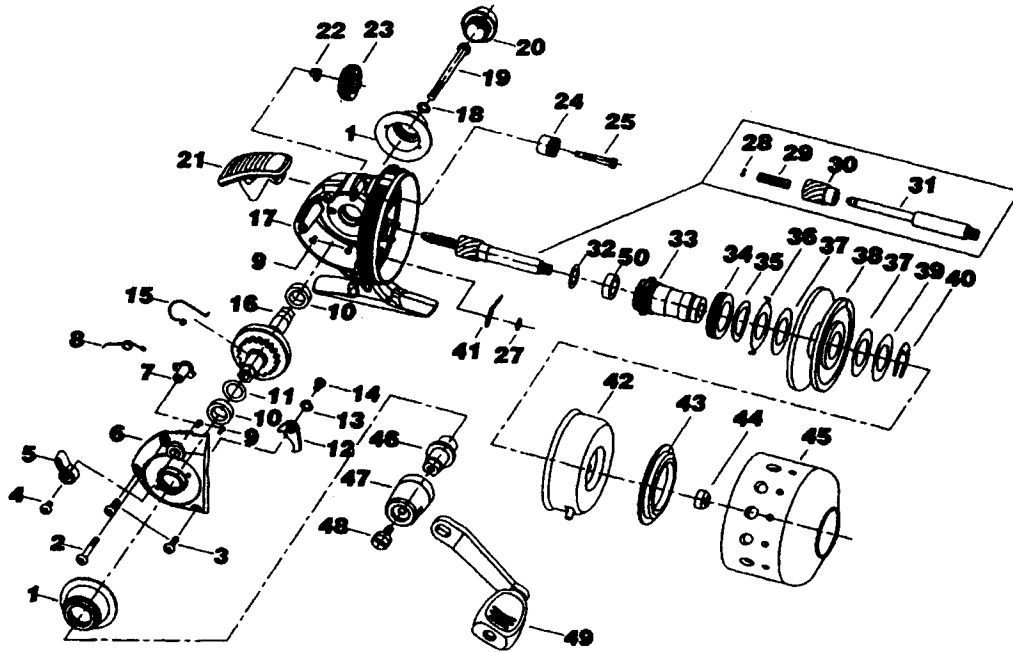


SPINCASTING REEL SPC80 / SPC100 / SPC120



| Key No. | Parts No. | Parts Name |
|---------|-----------|--------------------|
| 1 | W31-5002 | SIDE RING |
| 2 | W31-5101 | SIDE COVER SCREW A |
| 3 | W31-5201 | SIDE COVER SCREW B |
| 4 | W31-5301 | SIDE COVER SCREW C |
| 5 | W31-5402 | A/R LEVER |
| 6 | W31-5502 | SIDE COVER |
| 7 | W31-5701 | A/R CAM |
| 8 | W31-5801 | A/R CAM SPRING |
| 9 | W31-5901 | SIDE RING SCREW |
| 10 | W31-6001 | BUSHING |
| 11 | W31-6101 | DRIVE GEAR WASHER |
| 12 | W31-6201 | A/R PAWL |
| 13 | W31-6301 | WASHER |
| 14 | W31-6401 | A/R PAWL SCREW |
| 15 | W31-6501 | A/R PAWL SPRING |
| 16 | W31-6601 | DRIVE GEAR |
| 17 | W31-6704 | BODY |
| 18 | W31-7001 | HANDLE WASHER |
| 19 | W31-7101 | HANDLE SCREW B |
| 20 | W31-7202 | HANDLE SCREW CAP |
| 21 | W31-7302 | PUSH BUTTON |
| 22 | W31-7401 | DRAG DIAL COLLAR |
| 23 | W31-7501 | DRAG DIAL |
| 24 | W31-7601 | DRIVE GEAR A |
| 25 | W31-7701 | DRIVE GEAR SCREW |
| 27 | W31-7901 | RET |
| 28 | W31-8001 | SPRING RET |
| 29 | W31-8101 | MAIN SHAFT SPRING |
| 30 | W31-8201 | PINION GEAR |
| 31 | W31-8301 | MAIN SHAFT |
| 32 | W31-8501 | MAIN SHAFT WASHER |
| 33 | W31-8601 | SPOOL METAL |
| 34 | W31-8802 | DRAG PLT |
| 35 | W31-8901 | DRAG SPRING WASHER |
| 36 | W31-9002 | EARED WASHER |

| Key No. | Parts No. | Parts Name |
|---------|-----------|----------------|
| 37 | W31-9101 | DRAG WASHER |
| 38 | W31-9201 | SPOOL |
| 39 | W31-9501 | KEY WASHER |
| 40 | W31-9601 | SPOOL RET |
| 41 | W31-9701 | CLICK SPRING |
| 42 | W31-9801 | ROTOR |
| 43 | W32-0101 | LINE STOPPER |
| 44 | W32-0301 | ROTOR NUT |
| 45 | W32-0402 | FRONT COVER |
| 46 | W32-0701 | HANDLE METAL |
| 47 | W32-0802 | HANDLE STAND |
| 48 | W32-0901 | HANDLE SCREW A |
| 49 | W32-1002 | HANDLE |
| 50 | W31-6011 | BALL BEARING |

SPC100 SPECIAL PARTS

| Key No. | Parts No. | Parts Name |
|---------|-----------|--------------|
| 6 | W31-5602 | SIDE COVER |
| 17 | W31-6804 | BODY |
| 38 | W31-9301 | SPOOL |
| 42 | W31-9901 | ROTOR |
| 43 | W32-0201 | LINE STOPPER |
| 45 | W32-0502 | FRONT COVER |

SPC120 SPECIAL PARTS

| Key No. | Parts No. | Parts Name |
|---------|-----------|--------------|
| 6 | W31-5602 | SIDE COVER |
| 17 | W31-6904 | BODY |
| 31 | W31-8401 | MAIN SHAFT |
| 33 | W31-8701 | SPOOL METAL |
| 38 | W31-9401 | SPOOL |
| 42 | W32-0001 | ROTOR |
| 43 | W32-0201 | LINE STOPPER |
| 45 | W32-0602 | FRONT COVER |