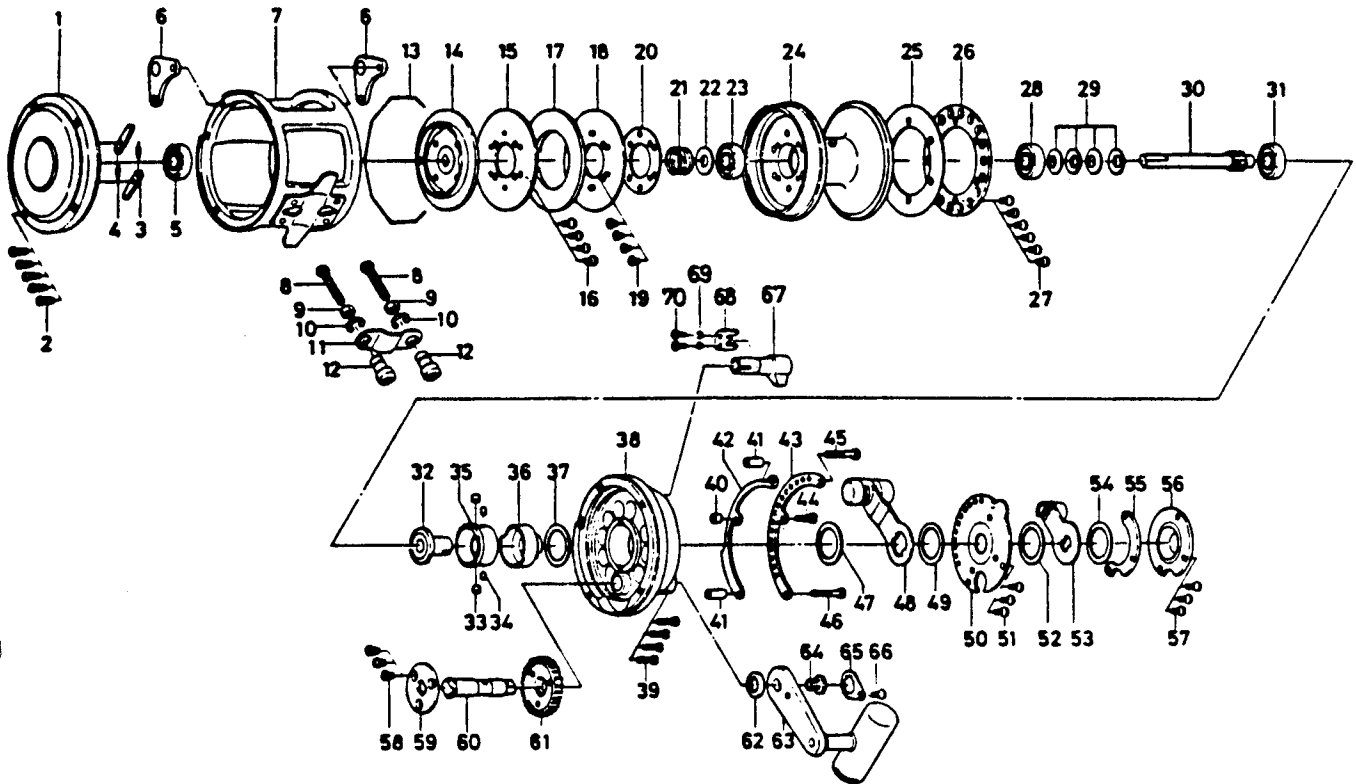


CONVENTIONAL LEVER-DRAG OCEAN REEL SEALINE TOURNAMENT SLT 30



Key No.	Part No.	Parts Name	Key No.	Part No.	Parts Name
1	B88-6701	Left side plate	36	B88-2701	Eccentric cam B
2	B83-1501	Left side plate screw	37	B69-5502	Eccentric cam washer
3	B70-4401	Anti-reverse pawl	38	B88-2201	Right side plate
4	144-8701	Anti-reverse pawl spring	39	B83-1501	Right side plate screw
5	B88-3001	Ball Bearing	40	B88-5301	Quadrant ring collar (short)
6	B88-5201	Harness lug	41	B70-2501	Quadrant ring collar (long)
7	B88-4801	Frame	42	B88-5501	Quadrant ring A
8	364-1101	Clamp bolt	43	B88-5402	Quadrant ring B
9	B11-0902	Clamp nut	44	B99-8201	Quadrant ring screw A
10	321-1101	Clamp retainer	45	B83-2401	Quadrant ring screw B
11	B88-7001	Rod brace	46	B83-2501	Quadrant ring screw C
12	342-5301	Rod brace nut	47	B69-5502	Drag lever washer A
13	B88-6601	Spool retainer	48	B92-2201	Drag lever A
14	B70-3702	Ratchet plate	49	B69-5502	Drag lever washer B
15	B88-6301	Metal drag washer A	50	B88-3301	Pre-set plate
16	B70-3401	Metal drag washer screw A	51	353-1201	Bridge cover screw
17	B88-6501	Drag washer	52	B69-5502	Drag lever washer C
18	B88-6201	Metal drag washer B	53	B92-2301	Drag lever B
19	B00-4301	Metal drag washer screw B	54	B69-5502	Drag lever washer D
20	B83-2701	Spool plate	55	B88-3501	Lever support plate
21	B83-2901	Ball bearing spring	56	B88-3601	Cover plate
22	B88-6401	Ball bearing washer	57	353-1201	Cover plate screw
23	B88-3001	Ball bearing	58	B70-3401	Drive gear plate screw
24	B88-5801	Spool	59	B88-4001	Drive gear plate
25	B88-6101	Click plate A	60	B88-3901	Drive shaft
26	B88-6001	Click plate B	61	B88-3801	Drive gear
27	B70-3401	Click plate screw	62	B88-4101	Drive shaft washer
28	B88-3001	Ball bearing	63	B88-4201	Handle
29	B88-5701	Disc spring washer	64	B88-4501	Handle screw
30	B88-5601	Pinion gear	65	B88-4701	Handle plate
31	B88-3001	Ball bearing	66	353-1201	Handle plate screw
32	B88-2901	Eccentric cam A	67	E05-9301	Click lever
33	B83-1301	Eccentric cam pin A	68	E05-8801	Click lever retainer
34	B69-8701	Eccentric cam pin B	69	160-8401	Click lever retainer washer
35	B88-2801	Sleeve	70	351-6407	Click lever retainer screw