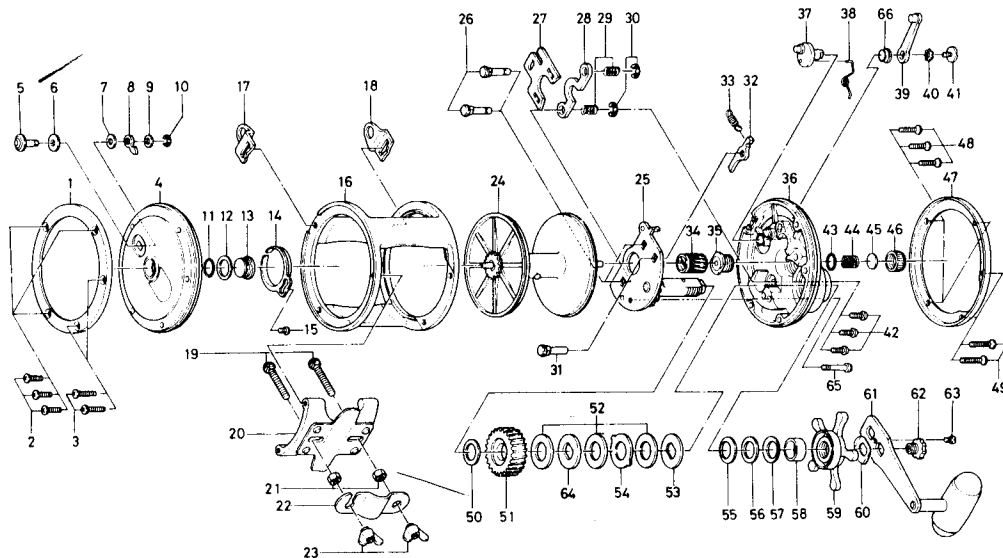


Conventional Reel

**Sealine 600H**



Key No.	Parts No.	Parts Name
1	171-5901	L. S. ring
2	353-7501	L. S. plate screw
3	353-5401	L. S. stand screw
4	760-5605	L. S. plate for 600H
5	541-6311	Click button
6	375-9201	Click button washer
7	375-9301	Click claw washer A
8	030-6111	Click claw
9	373-2700	Click claw washer B
10	320-7601	Click claw retainer
11	171-1001	Friction ring
12	375-9802	Case metal washer
13	720-2711	Case metal
14	160-7802	Click spring
15	352-2201	Click spring screw
16	701-1705	Frame
17	041-4901	Harness lug
18	041-4901	Harness lug
19	353-1001	Rod clamp screw
20	782-4901	Stand
21	341-9701	Rod clamp nut
22	040-7901	Rod clamp
23	342-2111	Rod clamp wing nut
24	733-2632	Spool for 600H
25	782-4402	Set plate
26	051-5611	Set plate pin A
27	041-4701	Eccentric jack
28	041-4801	Pinion yoke
29	144-8101	Clutch spring
30	320-1611	Clutch spring retainer
31	051-5511	Set plate pin B
32	111-6501	Anti-reverse claw
33	144-9511	Anti-reverse claw spring

Key No.	Parts No.	Parts Name
34	750-5801	Pinion gear
35	720-2321	Ball bearing metal
36	560-7432	R. S. plate
37	461-6911	Eccentric cam
38	144-4701	Eccentric cam spring
39	781-8621	Clutch lever
40	160-8001	Clutch lever lock washer
41	363-5301	Clutch lever screw
42	353-9701	Set plate screw A
43	171-1001	Friction ring
44	145-3101	Spool adjusting spring
45	375-7501	Spool adjusting cap metal
46	382-0301	Spool adjusting cap
47	171-5801	R. S. ring
48	353-7501	R. S. plate screw
49	353-5401	R. S. stand screw
50	370-4512	Drive gear washer
51	413-9612	Drive gear
52	375-0704	Drag washer A
53	376-2601	Drag washer D
54	376-2701	Drag washer C
55	375-3511	Tension spring
56	151-5212	Drag spring washer
57	151-5211	Tension spring
58	501-8911	Spacing sleeve
59	782-4501	Star drag
60	151-9801	Handle washer
61	747-4111	Handle
62	781-2301	Handle screw
63	353-2811	Handle lock screw
64	376-2602	Drag washer B
65	B15-9101	Set plate screw B
66	B35-2601	Clutch lever screw holder