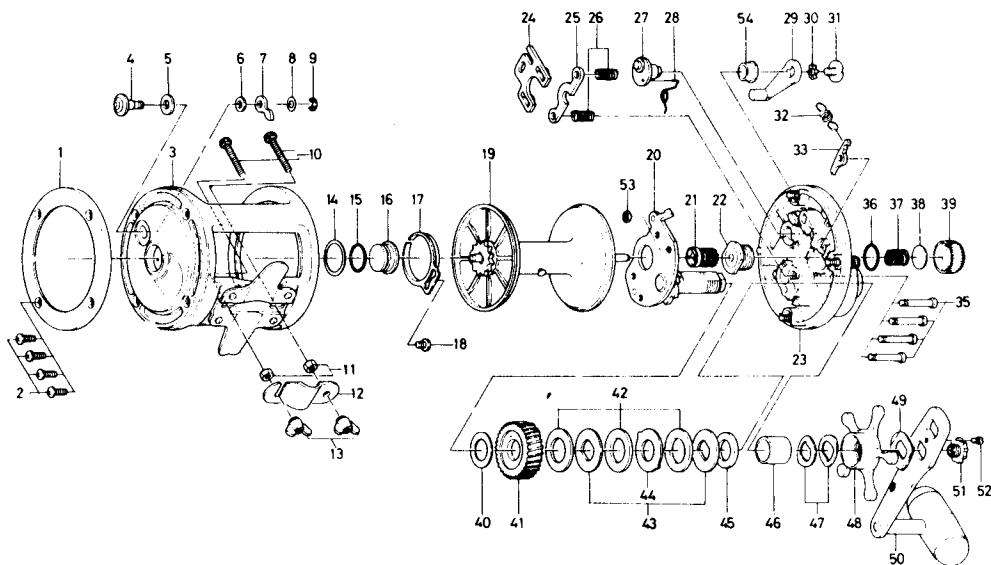


Conventional Reel

Sealine 50H



Key No.	Parts No.	Parts Name
1	171-6201	L. S. ring
2	353-6201	L. S. plate screw
3	783-3502	Frame
4	541-6501	Click button
5	375-9301	Click button washer
6	375-1101	Click claw washer A
7	030-6221	Click claw
8	373-1600	Click claw washer B
9	320-1402	Click claw retainer
10	353-9801	Rod clamp screw
11	341-9701	Rod clamp nut
12	041-5601	Rod clamp
13	342-2111	Rod clamp wing nut
14	375-9802	Friction ring
15	171-1001	"O" ring
16	720-2711	Case metal
17	160-7921	Click spring
18	351-7701	Click spring screw
19	733-3013	Spool
20	782-5502	Set plate
21	750-6011	Pinion gear
22	720-2321	Ball bearing metal
23	760-4912	R. S. plate
24	041-5701	Eccentric jack
25	041-5801	Pinion yoke
26	145-2411	Clutch spring
27	461-6801	Eccentric cam

Key No.	Parts No.	Parts Name
28	145-2501	Eccentric cam spring
29	782-5401	Clutch lever
30	160-8001	Clutch lever lock washer
31	363-5301	Clutch lever screw
32	145-2801	Anti-reverse claw spring
33	B12-0701	Anti-reverse claw
35	B40-3001	Set plate screw
36	171-1001	"O" ring
37	145-3101	Spool adjusting spring
38	375-7501	Spool adjusting cap metal
39	382-0301	Spool adjusting cap
40	375-2901	Drive gear washer
41	413-9511	Drive gear
42	375-9902	Drag washer A
43	376-3401	Drag washer B
44	376-3501	Drag washer C
45	376-3601	Drag washer D
46	501-9311	Spacing sleeve
47	151-8701	Drag spring washer
48	782-5304	Star drag
49	151-9701	Handle washer
50	747-4211	Handle
51	780-7502	Handle screw
52	353-2811	Handle lock screw
53	B03-7201	Set plate screw retaining nut
54	B35-2601	Clutch lever screw holder