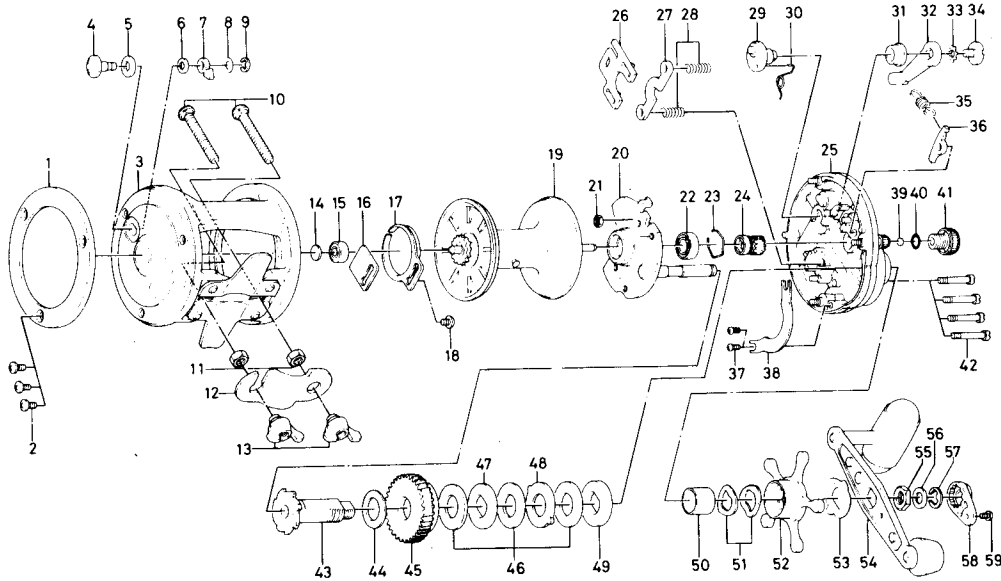


# CONVENTIONAL REEL Sealine 30SH



Key No.	Parts No.	Parts Name	Key No.	Parts No.	Parts Name
1	B12-0101	L.S. ring	31	B35-2501	Clutch lever screw holder
2	353-6201	L.S. plate screw	32	B12-0401	Clutch lever
3	B93-5301	Frame	33	160-8001	Clutch lever lock washer
4	541-6501	Click button	34	363-5301	Clutch lever screw
5	375-9301	Click button washer	35	145-2801	Anti-reverse claw spring
6	375-1101	Click claw washer A	36	B62-6801	Anti-reverse claw
7	030-6611	Click claw	37	<b>B62-7201</b>	Cover plate
8	373-1600	Click claw washer B	38	<b>B55-7601</b>	Cover plate screw
9	320-1402	Click claw retainer	39	B75-6101	Spool adjusting cap metal
10	353-9801	Rod clamp screw	40	B02-1901	Friction ring
11	341-9701	Rod clamp nut	41	B62-6301	Spool adjusting cap
12	041-5601	Rod clamp	42	B34-3301	Set plate screw
13	342-2111	Rod clamp wing nut	43	B12-1101	Gear shaft
14	375-7403	Ball bearing metal washer	44	375-2901	Drive gear washer
15	633-8811	Ball bearing	45	B62-7101	Drive gear
16	B12-2101	Click spring retainer	46	375-9903	Drag washer A
17	160-7922	Click spring	47	376-3401	Drag washer B
18	351-7701	Click spring screw	48	376-3501	Drag washer C
19	B12-2202	Spool	49	376-3403	Drag washer D
20	B62-6901	Set plate	50	B26-8401	Spacing sleeve
21	B03-7201	Set plate screw retaining nut	51	151-8701	Tension spring
22	636-6401	Ball bearing	52	782-5304	Star drag
23	170-7701	Ball bearing retainer	53	B17-2801	Handle washer
24	B62-6601	Pinion gear	54	B62-7301	Handle
25	B62-6101	R.S. plate	55	B26-7403	Handle nut
26	041-5701	Eccentric jack	56	371-0605	Handle nut washer
27	041-5801	Pinion yoke	57	320-7601	Handle nut retainer
28	145-2411	Clutch spring	58	B15-2301	Handle nut plate
29	B12-0301	Eccentric cam	59	351-1801	Handle nut plate screw
30	B12-0601	Eccentric cam spring			