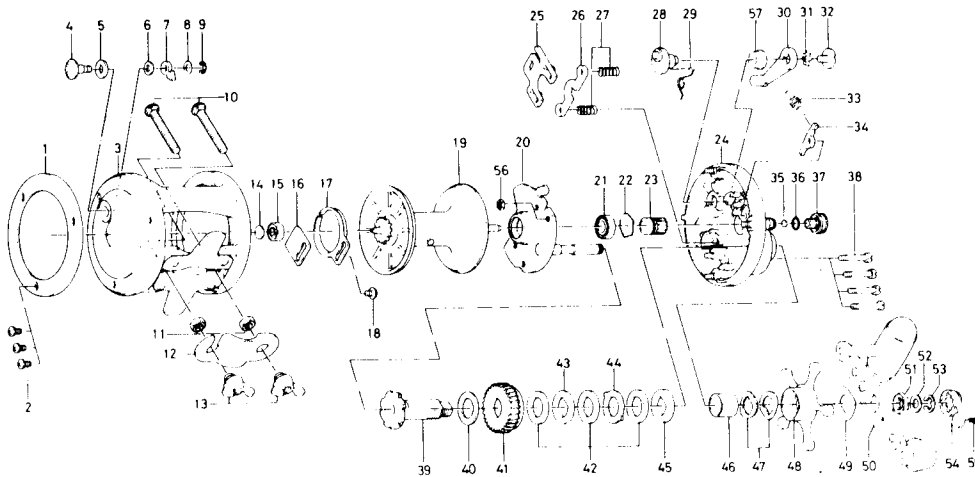


# Conventional Reel

# Sealine 30H



Key No.	Parts No.	Parts Name	Key No.	Parts No.	Parts Name
1	B12-0101	L. S. ring	30	B12-0401	Clutch lever
2	353-6201	L. S. plate screw	31	160-8001	Clutch lever lock washer
3	B12-1801	Frame	32	363-5301	Clutch lever screw
4	541-6501	Click button	33	145-2801	Anti-reverse claw spring
5	375-9301	Click button washer	34	B12-0701	Anti-reverse claw
6	375-1101	Click claw washer A	35	B12-0201	Spool adjusting cap metal
7	030-6611	Click claw	36	637-0601	Friction ring
8	373-1600	Click claw washer B	37	B12-7801	Spool adjusting cap
9	320-1402	Click claw retainer	38	B34-3301	Set plate screw
10	353-9801	Rod clamp screw	39	B12-1101	Gear shaft
11	341-9701	Rod clamp nut	40	375-2901	Drive gear washer
12	041-5601	Rod clamp	41	B12-1401	Drive gear
13	342-2111	Rod clamp wing nut	42	B12-1501	Drag washer A
14	375-7403	Ball bearing metal washer	43	375-6205	Drag washer B
15	633-8811	Ball bearing	44	375-6302	Drag washer C
16	B12-2101	Click spring retainer	45	375-6204	Drag washer D
17	160-7922	Click spring	46	B26-8401	Spacing sleeve
18	351-7701	Click spring screw	47	151-8701	Tension spring
19	B12-2201	Spool	48	782-5304	Star drag
20	B30-7901	Set plate	49	B17-2801	Handle washer
21	636-6401	Ball bearing	50	B12-1603	Handle
22	170-7701	Ball bearing retainer	51	B10-5701	Handle nut
23	750-6012	Pinion gear	52	371-0604	Handle nut washer
24	B11-9802	R. S. plate	53	320-7601	Handle nut retainer
25	041-5701	Eccentric jack	54	B15-2301	Handle nut plate
26	041-5801	Pinion yoke	55	351-1801	Handle nut plate screw
27	145-2411	Clutch spring	56	B03-7201	Set plate screw retaining nut
28	B12-0301	Eccentric cam	57	B35-2501	Clutch lever screw holder
29	B12-0601	Eccentric cam spring			