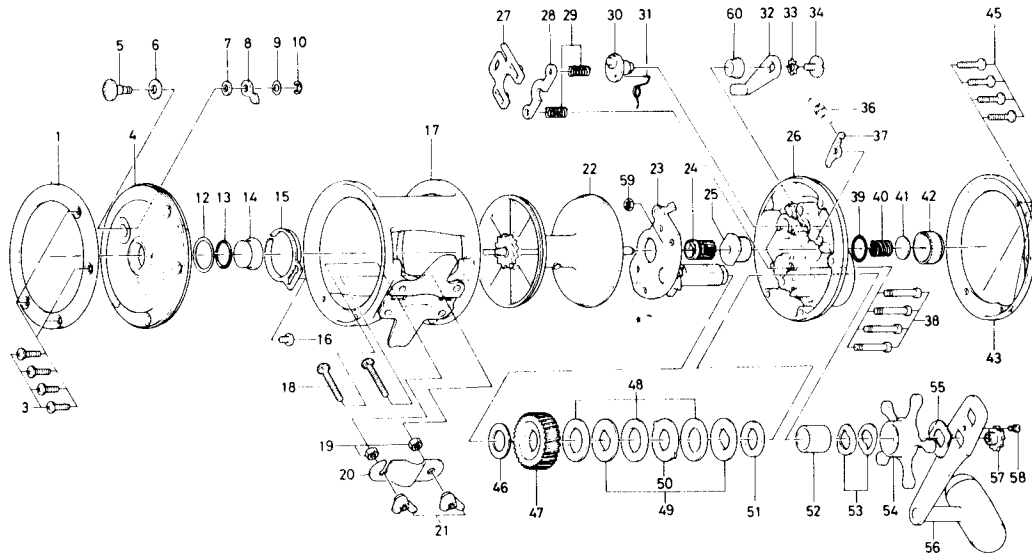


Conventional Reel

**Sealine 300H & 300HW\***



\*SPECIAL PART FOR 300HW – STAINLESS STEEL SPOOL

Key No.	Parts No.	Parts Name	Key No.	Parts No.	Parts Name
1	171-6501	L. S. ring	31	145-2501	Eccentric cam spring
3	353-5101	L. S. plate screw B	32	782-5001	Clutch lever
4	760-5106	L. S. plate for 300H	33	160-8001	Clutch lever lock washer
5	541-6501	Click button	34	363-5301	Clutch lever screw
6	375-9301	Click button washer	36	145-2801	Anti-reverse claw spring
7	375-1101	Click claw washer A	37	B12-0701	Anti-reverse claw
8	030-6221	Click claw	38	B40-3001	Set plate screw
9	373-1600	Click claw washer B	39	171-1001	Friction ring
10	320-1402	Click claw retainer	40	145-3101	Spool adjusting spring
12	375-9802	Case metal washer	41	375-7501	Spool adjusting cap metal
13	171-1001	Friction ring	42	382-0301	Spool adjusting cap
14	720-2711	Case metal	43	171-6401	R. S. ring
15	160-7922	Click spring	45	353-5101	R. S. plate screw
16	351-7701	Click spring screw	46	375-2901	Drive gear washer
17	701-7402	Frame	47	413-9711	Drive gear
18	353-9801	Rod clamp screw	48	375-9902	Drag washer A
19	341-9701	Rod clamp nut	49	376-3401	Drag washer B
20	041-5601	Rod clamp	50	376-3501	Drag washer C
21	342-2111	Rod clamp wing nut	51	376-3601	Drag washer D
22	733-3113	Spool for 300H	52	501-9311	Spacing sleeve
23	782-5502	Set plate	53	151-8701	Drag spring washer
24	750-6111	Pinion gear	54	782-5304	Star drag
25	720-2321	Ball bearing metal	55	151-9701	Handle washer
26	560-7913	R. S. plate	56	747-4211	Handle
27	041-5701	Eccentric jack	57	780-7502	Handle screw
28	041-5801	Pinion yoke	58	353-2811	Handle lock screw
29	145-2411	Clutch spring	59	B03-7201	Set plate screw retaining nut
30	461-6801	Eccentric cam	60	B35-2601	Clutch lever screw holder