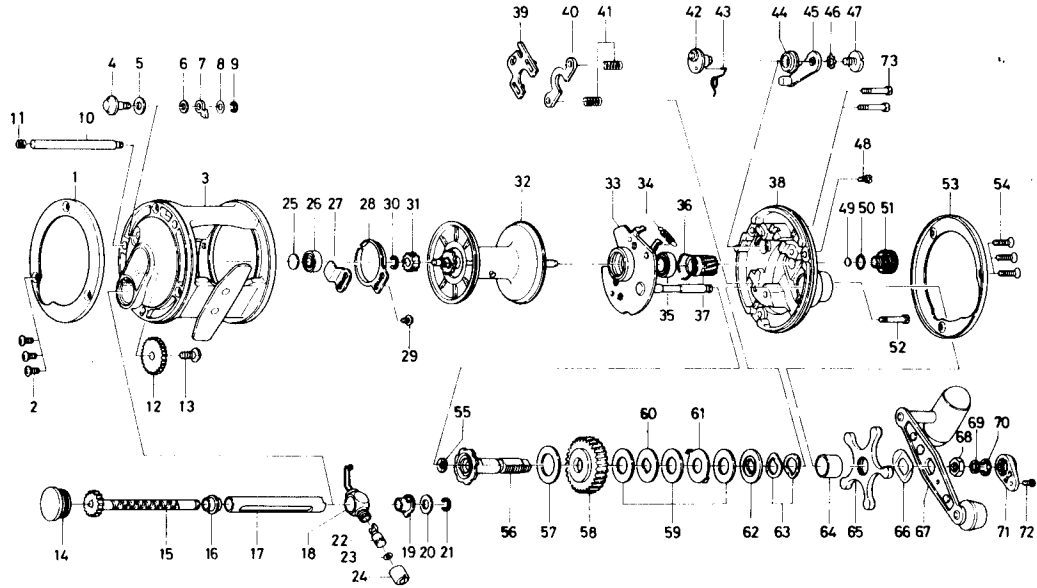


# MULTI PLYING REEL **Sealine 27SH**



Key No.	Parts No.	Parts Name
1	B 21-0901	Left side outer ring
2	353-6201	Left side plate screw
3	E 23-3401	Frame assembly
4	B 20-9201	Click button
5	B 40-3101	Click button washer
6	375-4301	Click pawl washer
7	B 20-9301	Click pawl
8	373-1300	Click pawl washer
9	320-5901	Click pawl retainer
10	B 21-0401	Stabilizer bar
11	B 76-3201	Stabilizer bar spring
12	B 20-9901	Idle gear
13	351-1801	Idle gear screw
14	B 40-6701	Left side cap
15	B 21-0001	Worm shaft
16	B 10-0301	Worm bearing A
17	B 21-0301	Level wind guard
18	B 21-0501	Line guide
19	B 09-9701	Worm bearing B
20	373-1302	Worm shaft holder washer
21	320-5901	Worm shaft retainer
22	E 24-0901	Line guide pawl
23	375-0800	Line guide washer
24	341-5901	Pawl cap
25	375-7403	Spacer A
26	633-8811	Ball bearing A
27	B 20-9001	Click spring retainer
28	B 62-9101	Click spring
29	352-9501	Click spring screw
30	320-8202	Spool gear retainer
31	B 20-9801	Spool gear
32	E 23-3501	Spool assembly
33	B 61-1502	Set plate
34	145-2801	Anti-reverse pawl spring
35	B 18-1601	Ball bearing B
36	B 27-0501	Bearing retainer
37	E 23-3001	Pinion gear

Key No.	Parts No.	Parts Name
38	B 20-6802	Right side plate
39	B 20-7201	Yoke plate
40	B 20-7301	Yoke
41	B 35-4901	Yoke spring
42	B 20-7001	Clutch cam
43	B 12-0601	Clutch spring
44	B 35-2501	Clutch lever screw holder
45	783-2101	Clutch lever
46	160-8001	Clutch lever lock washer
47	363-5301	Clutch lever screw
48	B 39-5401	Set plate screw A
49	B 12-0201	Spacer B
50	637-0601	"O" ring
51	B 12-7801	Cast control cap
52	B 20-8201	Set plate screw B
53	B 21-0801	Right side outer ring
54	353-4301	Right side plate screw
55	373-7611	Drive shaft washer A
56	B 20-7802	Drive shaft
57	374-9302	Drive shaft washer B
58	E 23-3201	Drive gear
59	374-9305	Drag washer
60	374-9401	Key washer A
61	375-8701	Eared washer
62	376-0001	Key washer B
63	150-8901	Drag spring washer
64	B 20-8101	Spacing sleeve
65	B 20-8301	Star drag
66	B 41-5301	Friction washer
67	E 23-3301	Handle assembly
68	B 43-3601	Handle nut
69	B 41-1701	Handle nut washer
70	320-8202	Drive shaft retainer
71	B 43-3901	Handle nut plate
72	351-1801	Handle nut plate screw
73	B 66-1601	Set plate screw