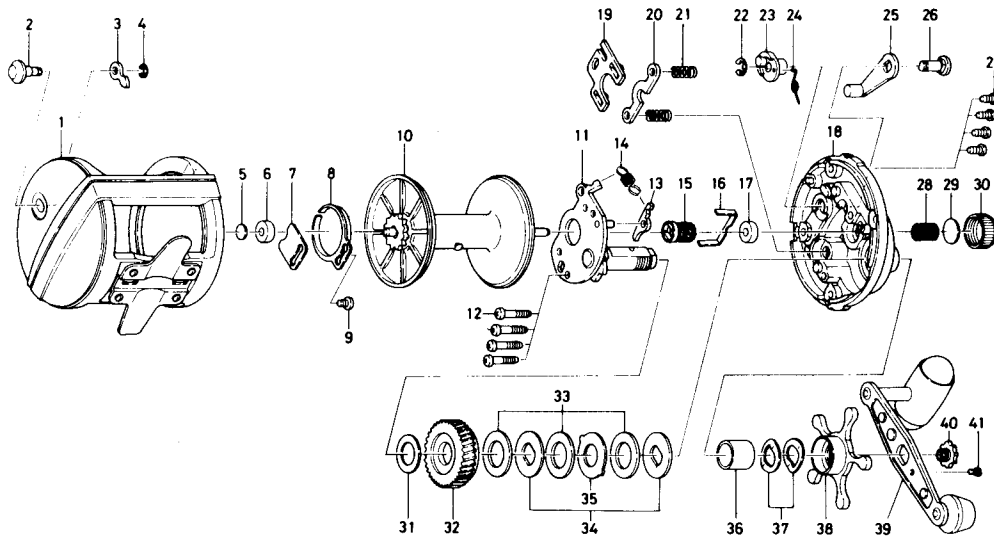


CONVENTIONAL **Sealine Sportline SL250H**



Key No.	Parts No.	Parts Name	Key No.	Parts No.	Parts Name
1	E04-3401	Frame	22	320-7601	Clutch lever retainer
2	541-6501	Click button	23	E04-2901	Clutch cam
3	030-6221	Click pawl	24	E04-9401	Clutch spring
4	320-1402	Click pawl retainer	25	782-5401	Clutch lever
5	375-7403	Spacer A	26	E04-3001	Clutch lever pin
6	637-5601	Bushing	27	E04-3701	Right side plate screw
7	E04-3601	Click spring retainer	28	145-3101	Spool tension spring
8	160-7922	Click spring	29	375-7501	Spacer B
9	B83-4402	Click spring screw	30	382-0301	Cast control cap
10	E04-9801	Spool	31	375-2901	Drive shaft washer
11	E04-3101	Set plate	32	E05-3101	Drive gear
12	E04-3301	Set plate screw	33	375-9903	Drag washer
13	B12-0701	Anti-reverse pawl	34	376-3404	Key washer
14	145-2801	Anti-reverse pawl spring	35	376-3501	Eared washer
15	E04-9501	Pinion gear	36	501-9312	Spacing sleeve
16	E04-2801	Pinion retainer	37	151-8701	Friction washer
17	637-5601	Bushing	38	782-5306	Star drag
18	E04-2601	Right side plate	39	E05-3001	Handle
19	041-5701	Yoke plate	40	353-3302	Handle screw A
20	041-5801	Yoke	41	353-2811	Handle screw B
21	145-2411	Yoke spring			