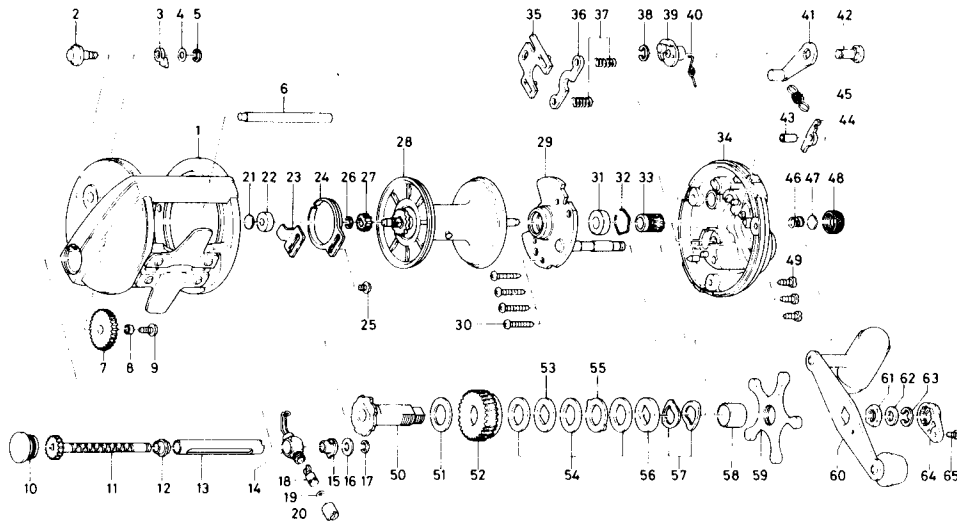


CONVENTIONAL REEL

Sealine Sportline SL175H



Key No.	Parts No.	Parts Name	Key No.	Parts No.	Parts Name
1	6-E07-4901	Frame assembly	34	6-E07-2701	Right side plate
2	6-B21-6601	Click button	35	6-041-5701	Yoke plate
3	6-030-6611	Click pawl	36	6-041-5801	Yoke
4	6-373-1600	Click pawl washer	37	6-145-2411	Yoke spring
5	6-320-1402	Click pawl retainer	38	6-320-7601	Clutch lever retainer
6	6-B21-6301	Frame post	39	6-E04-2901	Clutch cam
7	6-B21-5801	Idle gear	40	6-145-2501	Clutch spring
8	6-B65-6201	Collar	41	6-782-5403	Clutch lever
9	6-B01-7101	Cog wheel screw	42	6-E04-3001	Clutch lever pin
10	6-B40-6701	Right side cap	43	6-E08-1801	Collar
11	6-B21-5901	Worm shaft	44	6-B12-0702	Anti-reverse pawl
12	6-B10-0301	Worm bearing	45	6-145-2801	Anti-reverse pawl spring
13	6-B21-6201	Level wind guard	46	6-B93-9601	Spool tension spring
14	6-B21-6401	Line guide	47	6-375-7405	Spacer A
15	6-B09-9701	Worm bearing	48	6-B93-9701	Cast control cap
16	6-373-1302	Worm shaft holder washer	49	6-E04-3701	Set plate screw
17	6-320-5901	Worm shaft retainer	50	6-B12-1101	Gear shaft
18	6-B71-0101	Line guide pawl	51	6-375-2901	Drive gear washer
19	6-375-0800	Line guide washer	52	6-E07-4701	Drive gear
20	6-341-5901	Pawl cap	53	6-375-6203	Key washer A
21	6-375-7403	Ball bearing metal washer	54	6-B12-1502	Drag washer
22	6-637-5601	Bushing	55	6-375-6302	Eared washer
23	6-B21-5501	Click spring retainer	56	6-375-6204	Key washer B
24	6-160-7922	Click spring	57	6-151-8701	Drag spring washer
25	6-B83-4402	Click spring screw	58	6-B36-5101	Spacing sleeve
26	6-320-8002	Spool gear retaining ring	59	6-B21-5002	Star drag
27	6-403-2901	Spool gear	60	6-E07-4801	Handle assembly
28	6-E07-5401	Spool assembly	61	6-B26-7403	Handle nut
29	6-E07-4501	Set plate	62	6-371-0605	Handle nut washer
30	6-E04-3301	Set plate screw	63	6-320-7601	Handle nut retainer
31	6-B73-8001	Bushing	64	6-B15-2302	Handle nut plate
32	6-170-7701	Bearing retainer	65	6-351-1801	Handle nut plate screw
33	6-B76-2601	Pinion gear			