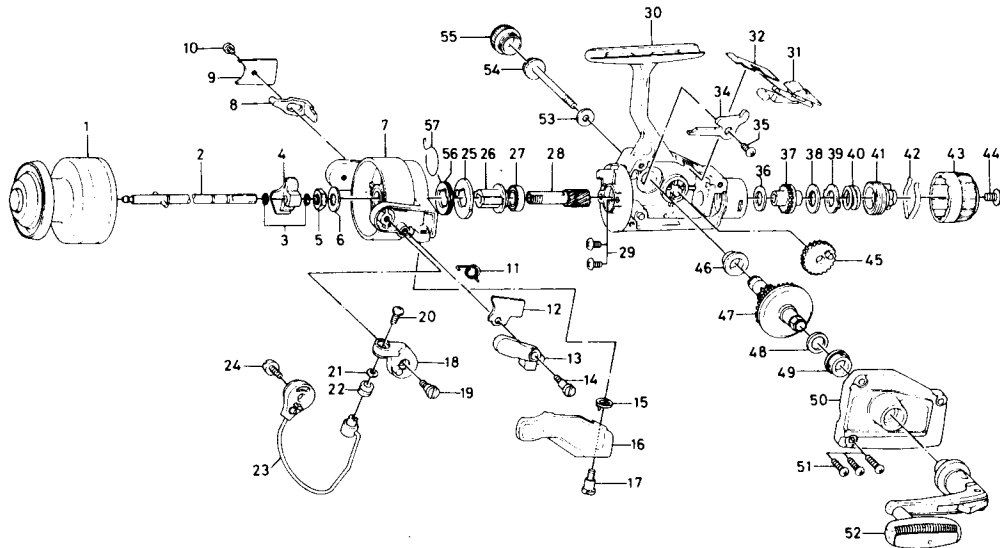


SPINNING REEL SKA1655/2055



Key No.	Parts No.	Parts Name	Key No.	Parts No.	Parts Name
1	B82-7701	Spool	34	B89-9001	Anti-reverse claw
2	B77-0801	Main shaft	35	351-6102	Anti-reverse claw screw
3	320-8202	Oscillating slider retainer	36	B46-9504	Drag washer A
4	B77-0701	Oscillating slider	37	B76-9801	Click gear
5	341-9201	Rotor nut	38	B78-6601	Drag washer B
6	B27-5401	Rotor washer	39	373-3603	Drag washer C
7	B82-1502	Rotor	40	B91-3701	Drag knob spring
8	B77-3701	Bail kick lever	41	B77-0003	Drag screw
9	B76-9701	Bail kick lever cover	42	B77-0301	Drag washer spring
10	352-0401	Bail kick lever cover screw	43	B82-6801	Drag knob
11	B76-9101	Bail spring	44	352-1105	Drag knob screw
12	B76-9201	Bail spring cover	45	B74-3701	Oscillating gear
13	B76-9301	Trigger plate	46	B12-9002	Bearing
14	B68-8801	Bail spring cover screw A	47	B82-2701	Drive gear
15	B67-5201	Trigger spring	48	373-7800	Drive gear washer
16	B67-5104	Trigger lever	49	B12-9002	Bearing
17	B68-8801	Trigger screw	50	B82-7101	Body cover
18	B67-4601	Arm lever	51	351-5901	Body cover screw
19	B67-4701	Arm lever screw	52	B91-1201	Handle
20	B67-9302	Bail screw	53	B40-3102	Handle washer
21	B55-4301	Bail washer	54	B82-7601	Handle screw
22	250-3921	Line roller	55	B82-3801	Handle screw cap
23	B77-3001	Bail	56	B89-8701	Spring holder
24	B68-8701	Bail holder screw	57	B89-8801	Anti-reverse claw spring
25	B76-8901	Ratchet			
26	B82-6602	Ratchet holder			
27	637-5701	Bail bearing			
28	B82-6501	Pinion gear			
29	351-7703	Ball bearing screw			
30	B82-6305	Body			
31	B84-8901	Anti-reverse lever			
32	B79-0101	Anti-reverse lever spring			

SKA2055 Special Parts					
1	B82-7801	Spool			
7	B82-1702	Rotor			
8	B76-9601	Bail kick lever			
23	B76-9401	Bail			
30	B82-6306	Body			
50	B82-7102	Body cover			
52	B82-7301	Handle			