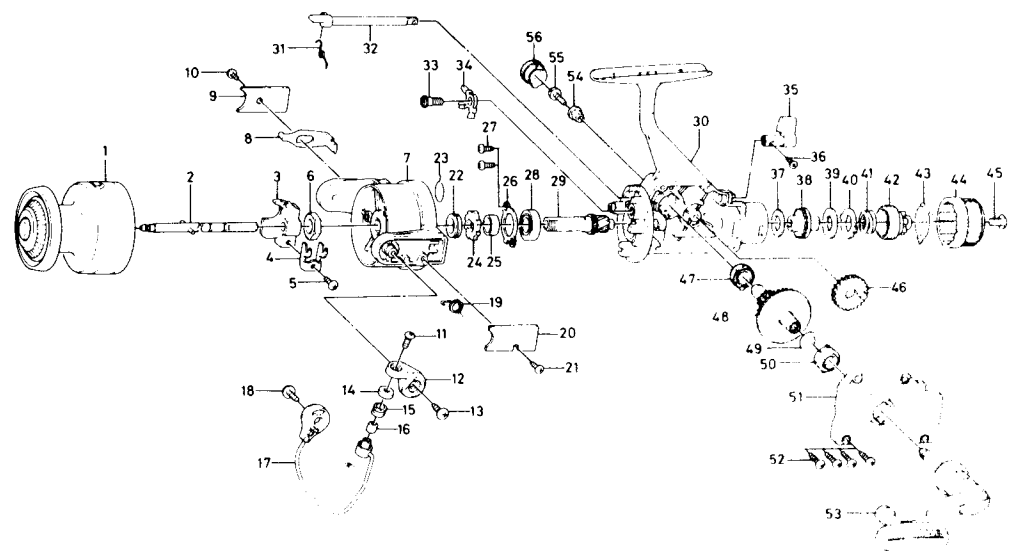




SPINNING REEL SG1650/2050



Key No.	Parts No.	Parts Name	Key No.	Parts No.	Parts Name
1	B83-9401	Spool	33	B83-6301	Anti-reverse claw screw
2	B83-9801	Main shaft	34	B74-5501	Anti-reverse claw
3	B64-0102	Oscillating slider	35	B63-8101	Anti-reverse lever
4	B49-2501	Oscillating slider retainer	36	B12-8201	Anti-reverse lever screw
5	351-1804	Oscillating slider screw	37	B46-9504	Drag washer A
6	B43-7601	Rotor nut	38	B76-9802	Click gear
7	B82-2001	Rotor	39	B78-6601	Drag washer B
8	B83-6701	Bail kick lever	40	B83-9501	Drag washer C
9	B76-9703	Bail kick lever cover	41	B91-3701	Drag knob spring
10	B83-4401	Bail kick lever cover screw	42	B77-0003	Drag screw
11	B67-9303	Bail screw	43	B77-0301	Drag washer spring
12	B68-1102	Arm lever	44	B83-9602	Drag knob
13	B84-2101	Arm lever screw	45	352-1105	Drag knob screw
14	B68-5703	Roller collar A	46	B74-3701	Oscillating gear
15	250-3921	Line roller	47	B84-3901	Bearing
16	B45-1501	Roller collar B	48	B83-6801	Drive gear
17	B84-0001	Bail	49	373-7800	Drive gear washer
18	B84-2101	Bail holder screw	50	B84-3901	Bearing
19	B18-7702	Bail spring	51	B83-6902	Body cover
20	B77-2202	Bail spring cover	52	B83-5001	Body cover screw
21	B83-4401	Bail spring cover screw	53	B91-3302	Handle
22	501-9901	Spring holder	54	B85-0801	Handle collar
23	145-0901	Anti-reverse claw spring	55	B90-3301	Handle screw
24	280-9001	Ratchet	56	B68-2603	Handle screw cap
25	B83-6201	Spacing sleeve	SG2050 Special Parts		
26	B35-6301	Ball bearing ret. washer	1	B84-3801	Spool
27	B83-4402	Ball bearing ret. washer screw	7	B82-2201	Rotor
28	636-6011	Ball bearing	8	B83-7301	Bail kick lever
29	B83-6101	Pinion gear	17	B84-0401	Bail
30	B83-5902	Body	30	B83-5904	Body
31	144-0321	Anti-reverse cam spring	51	B83-6904	Body cover
32	B83-6001	Anti-reverse cam	53	B83-7104	Handle