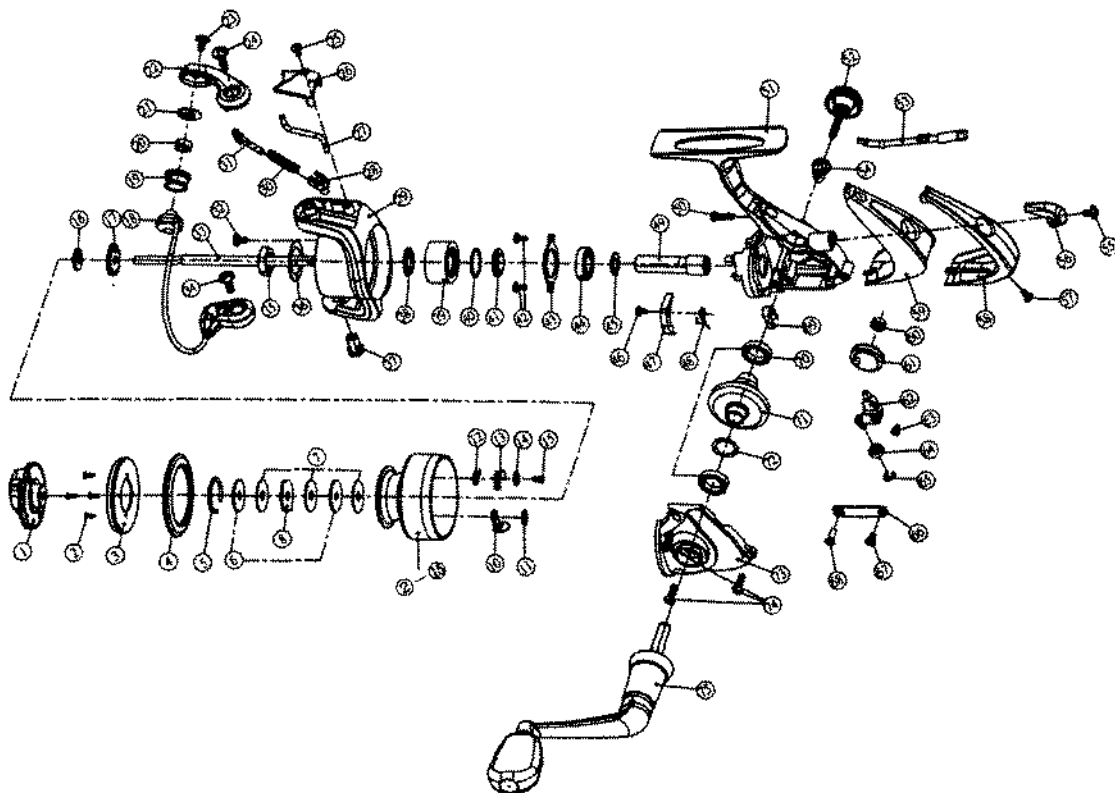


REGAL 1000-4i



Key No.	Parts No.	Parts Name
1	W44-4001	DRAG KNOB
2	W44-4101	SPOOL RING RET SCREW
3	W44-4201	SPOOL RING RET
4	W44-4301	SPOOL RING
5	W44-4401	DRAG WASHER RET
6	W44-4501	KEY WASHER
7	W44-4601	DRAG WASHER
8	W44-4701	EARED WASHER
10	W44-4901	LINE HOLDER
11	W44-5001	LOCK WASHER
12	W44-5101	CLICK SPRING
13	W44-5201	CLICK PAWL
14	W44-5301	CLICK PAWL WASHER
15	W44-5401	CLICK PAWL SCREW
2-15	W45-1601	SPOOL
2-15	W45-1701	SPOOL (EXTRA)
16	W44-5501	SPOOL WASHER
17	W44-5601	CLICK GEAR
18	W44-5701	BAIL
19	W44-5801	LINE ROLLER
20	W44-5901	BALL BEARING
21	W44-6001	LINE ROLLER COLLAR
22	W44-6101	BAIL ARM
23	W44-6201	LINE ROLLER SCREW
24	W44-6301	BAIL ARM SCREW
25	W44-6401	BAIL SPRING COVER SCREW
26	W44-6601	BAIL SPRING COVER
27	W44-6701	TRIP LINK
28	W44-6801	BAIL SPRING HOLDER
29	W44-6901	ROTOR
30	W44-7001	BAIL SPRING
31	W44-7101	BAIL SPRING SHAFT
32	W44-7201	ROTOR NUT LOCK SCREW
33	W44-7301	MAIN SHAFT
34	W44-7401	BAIL HOLDER SCREW
35	W44-7501	ROTOR NUT
36	W44-7601	ROTOR NUT WASHER
37	W44-7701	BAIL HOLDER NUT

Key No.	Parts No.	Parts Name
38	W44-7801	ROLLER CLUTCH COLLAR
39	W44-7901	ROLLER CLUTCH
40	W44-8001	ROLLER CLUTCH WASHER
41	W44-8101	BEARING RET COLLAR
42	W44-8201	BEARING RET SCREW
43	W44-8301	BEARING RET
44	W44-8401	BALL BEARING
45	W44-8501	PINION WASHER
46	W44-8601	A/R PAWL SCREW
47	W44-8701	A/R PAWL
48	W44-8801	BAIL TRIP LEVER
49	W44-8901	PINION GEAR
50	W44-9001	REAR COVER SCREW
51	W44-9101	BODY
52	W44-9201	HANDLE SCREW
53	W44-9301	A/R CAM
54	W44-9401	HANDLE COLLAR
55	W44-9501	A/R LEVER SCREW
56	W44-9601	A/R LEVER
57	W44-9701	REAR COVER B SCREW
58	W44-9801	REAR COVER B
59	W44-9901	REAR COVER A
60, 64	W45-0001	BUSHING
61	W45-0101	OSC GEAR
62	W45-0201	OSC SLIDER
63	W45-0301	OSC SLIDER SCREW
65	W45-0501	OSC SLIDER WASHER
66	W45-0601	BALL BEARING COVER
67	W45-0701	BEARING COVER SCREW A
68	W45-0801	BEARING COVER SCREW B
69	W45-0901	A/R CAM SPRING B
70	W45-1001	BALL BEARING
71	W45-1101	DRIVE GEAR
72	W45-1201	DRIVE GEAR WASHER
73	W45-1301	SIDE COVER
74	W45-1401	SIDE COVER SCREW
75	W45-1501	HANDLE