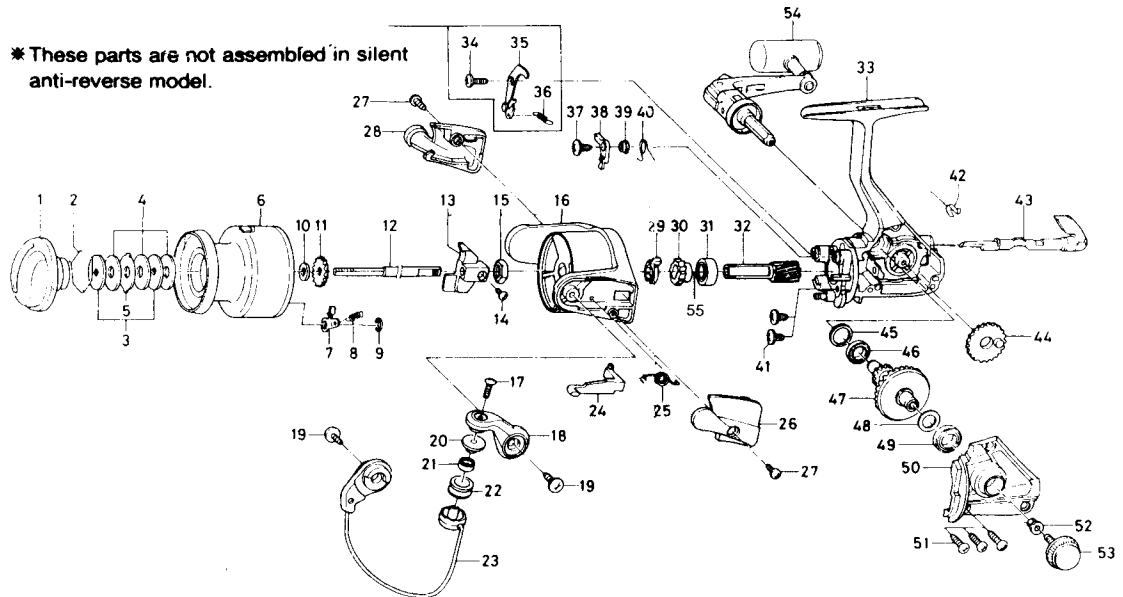


SPINNING REEL REGAL-Z1500BL

* These parts are not assembled in silent anti-reverse model.



Key NO.	Parts No.	Parts Name	Key NO.	Parts No.	Parts Name
2-9	F33-0603	Spool assembly	31	634-1301	Ball bearing B
1	F32-8503	Drag knob	32	F12-1601	Pinion gear
2	F37-3301	Drag washer retainer	33	F33-1301	Body assembly
3	E46-7201	Key washer	37	F12-5701	Anti-reverse pawl screw
4	E13-6001	Drag washer	38	F12-1901	Anti-reverse pawl
5	373-3603	Eared washer	39	F12-3501	Anti-reverse pawl collar
6	F33-0703	Spool assembly	40	F12-3401	Anti-reverse pawl spring
7	B07-5304	Click pawl	41	E03-7801	Bearing retainer screw
8	E40-3101	Click spring	42	F12-2001	Anti-reverse cam spring
9	320-5901	Click retainer	43	F08-5123	Anti-reverse lever
10	E46-7101	Spool washer	44	F12-2201	Oscillating gear
11	270-6501	Click gear	45	E50-5801	Bearing washer
12	E49-8401	Main shaft	46	E30-6801	Ball bearing C
13	F12-2301	Oscillating slider	47	F12-1501	Drive gear
14	351-0311	Oscillating slider screw	48	375-8502	Drive gear washer
15	341-9201	Rotor nut	49	634-1301	Ball bearing B
16	F32-7803	Rotor	50	F83-1001	Side cover
17	B67-9306	Line roller screw	51	E15-8602	Side cover screw
18	F32-3003	Bail arm	52	501-8501	Handle collar
19	B84-2102	Bail arm screw	53	B92-5006	Handle lock screw
20	F06-6301	Line roller collar	54	F33-1201	Handle assembly
21	F05-5601	Ball bearing A	55	375-8502	Pinion washer
22	F05-8901	Line roller			
23	F33-1101	Bail assembly			
24	E49-6401	Bail trip lever			
25	E49-6801	Bail spring			
26	F32-4203	Bail spring cover			
27	E24-8101	Bail spring cover screw			
28	F32-6303	Bail trip cover			
29	F12-2101	Anti-reverse pawl-spring A			
30	F32-7701	Anti-reverse ratchet			