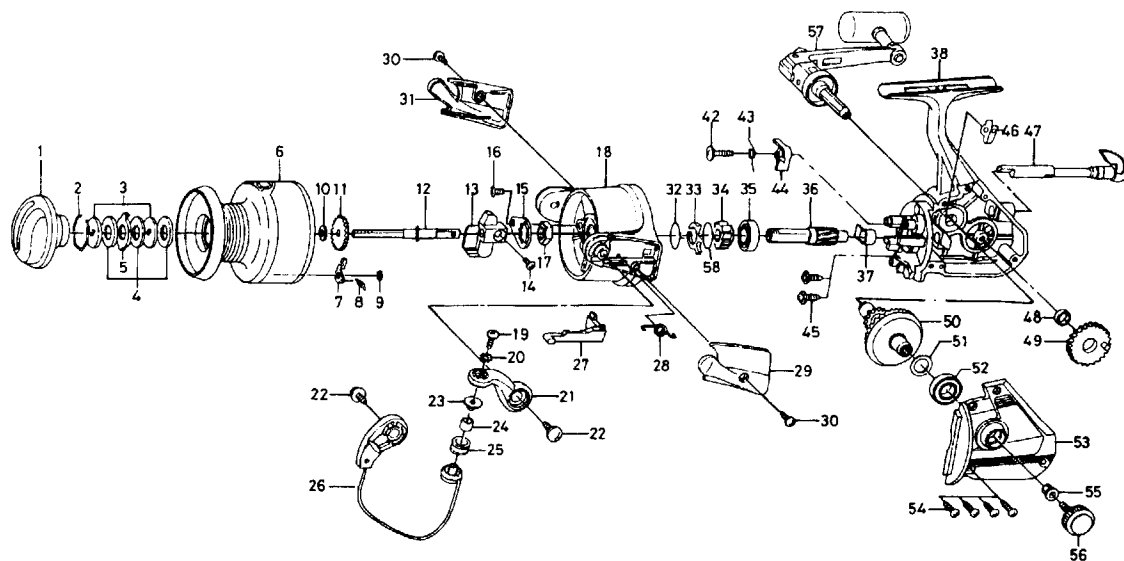


# SPINNING REEL REGAL RG-X4500-2B/REG-X5000-2B



Key No.	Parts No.	Parts Name	Key No.	Parts No.	Parts Name
2-9	L13-5102	Spool assembly	35	L03-6401	Ball bearing A
1	F36-9802	Drag knob	36	L10-7701	Pinion gear
2	171-7701	Drag washer retainer	37	B88-0001	Pinion collar
3	L03-1301	Key washer	38	E53-2801	Body assembly
4	373-3712	Drag washer	42	L06-6501	Anti-reverse pawl screw
5	B89-9501	Eared washer	43	L13-7201	Anti-reverse pawl spring C
6	L13-5202	Spool assembly	44	L06-6301	Anti-reverse pawl
7	B07-8201	Click pawl	45	L01-1601	Bearing retainer screw
8	145-2101	Click spring	46	E01-1801	Anti-reverse cam spring
9	320-1402	Click retainer	47	L10-0701	Anti-reverse lever
10	F09-4701	Spool washer	48	B47-4101	Oscillating gear collar
11	L02-1401	Click gear	49	L11-7001	Oscillating gear
12	L10-7301	Main shaft	50	B78-9501	Drive gear
13	L10-6601	Oscillating slider	51	371-2821	Drive gear washer
14	351-8901	Oscillating slider screw	52	B54-6001	Ball Bearing B
15	B02-1601	Rotor nut holding plate	53	E53-2901	Side cover
16	L01-1702	Rotor nut holding plate screw	54	B83-5002	Side cover screw
17	340-8301	Rotor nut	55	F40-9001	Handle collar
18	F36-8602	Rotor	56	L00-9102	Handle lock screw
19	E45-4002	Line roller screw	57	L05-9002	Handle assembly
20	160-8401	Lock washer	58	F43-1001	Ratchet washer
21	F36-9002	Bail arm			
22	E00-7601	Bail arm screw			
23	F08-8301	Line roller collar			
24	E50-5901	Line roller bushing			
25	E50-6001	Line roller			
26	F36-9202	Bail assembly			
27	L10-6901	Bail trip lever			
28	F43-6401	Bail spring			
29	F36-9102	Bail spring cover			
30	E24-8101	Bail spring cover screw			
31	F36-9502	Bail trip cover			
32	F21-2001	Anti-reverse pawl spring A			
33	L06-6801	Anti-reverse pawl spring B			
34	F36-8501	Anti-reverse ratchet			

RG-X5000-2B Special Parts		
2-9	L13-6302	Spool assembly
18	F37-1002	Rotor assembly
26	F37-1202	Bail assembly
27	L10-7101	Bail trip lever
38	E53-3401	Body assembly
52	E53-2902	Side cover