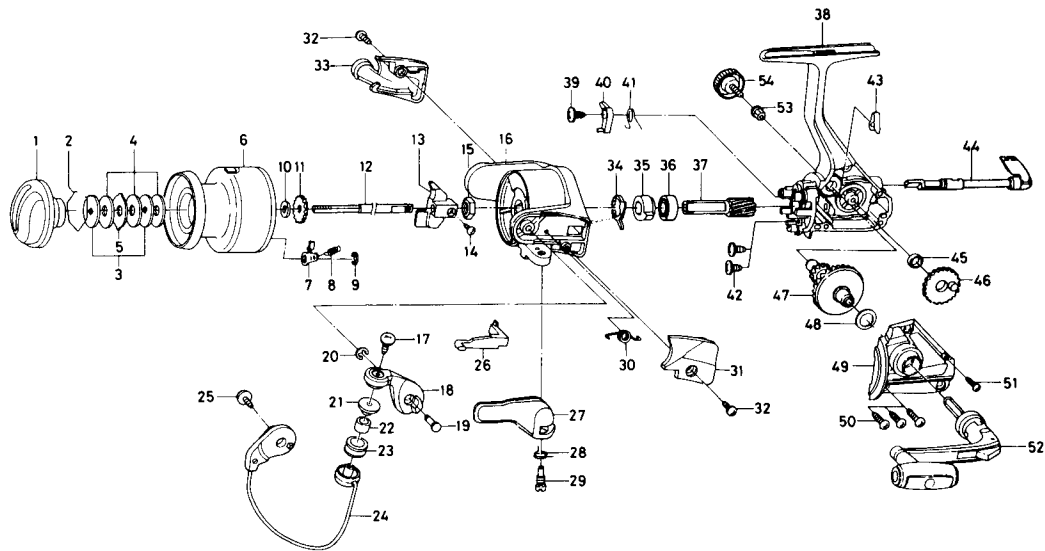


SPINING REEL REGAL-S3505B



| Key NO. | Parts No. | Parts Name | Key NO. | Parts No. | Parts Name |
|---------|-----------|--------------------------|---------|-----------|----------------------------|
| 2-9 | F32-9301 | Spool assembly | 28 | E36-9901 | Trigger spring |
| 1 | F32-9501 | Drag knob | 29 | E41-7801 | Trigger screw |
| 2 | 171-7701 | Drag washer retainer | 30 | F12-8901 | Bail spring |
| 3 | F09-4901 | Key washer | 31 | F31-4501 | Bail spring cover |
| 4 | E13-6003 | Drag washer | 32 | E24-8101 | Bail spring cover screw |
| 5 | 373-3603 | Eared washer | 33 | F31-4601 | Bail trip cover |
| 6 | F32-9401 | Spool assembly | 34 | E46-2001 | Anti-reverse pawl spring A |
| 7 | B07-5304 | Click pawl | 35 | F11-1301 | Anti-reverse ratchet |
| 8 | E40-3101 | Click spring | 36 | L03-6502 | Ball bearing |
| 9 | 320-5901 | Click retainer | 37 | E52-0101 | Pinion gear |
| 10 | F09-4701 | Spool washer | 38 | F32-9002 | Body assembly |
| 11 | E46-2701 | Click gear | 39 | E00-7101 | Anti-reverse pawl screw |
| 12 | E48-5301 | Main shaft | 40 | E46-1302 | Anti-reverse pawl |
| 13 | F09-1301 | Oscillating slider | 41 | E46-1201 | Anti-reverse pawl spring B |
| 14 | 352-1502 | Oscillating slider screw | 42 | E03-7801 | Bearing retainer screw |
| 15 | 340-6602 | Rotor nut | 43 | E32-7801 | Anti-reverse cam spring |
| 16 | F33-3501 | Rotor | 44 | F08-5124 | Anti-reverse lever |
| 17 | B67-9304 | Line roller screw | 45 | F13-1601 | Oscillating gear collar |
| 18 | F17-9802 | Bail arm | 46 | E46-1501 | Oscillating gear |
| 19 | E49-3501 | Bail arm screw | 47 | E52-0201 | Drive gear |
| 20 | 320-5901 | Bail arm screw retainer | 48 | 373-7802 | Drive gear washer |
| 21 | F06-6301 | Line roller collar | 49 | F32-9102 | Side cover |
| 22 | E50-5901 | Line roller bushing | 50 | B83-5002 | Side cover screw A |
| 23 | E50-6001 | Line roller | 51 | E15-8602 | Side cover screw B |
| 24 | F33-3601 | Bail assembly | 52 | F33-5301 | Handle assembly |
| 25 | B84-2102 | Bail trip cam screw | 53 | E12-7501 | Handle collar |
| 26 | E46-2101 | Bail trip lever | 54 | B92-5001 | Handle lock screw |
| 27 | F18-0002 | Trigger lever | | | |