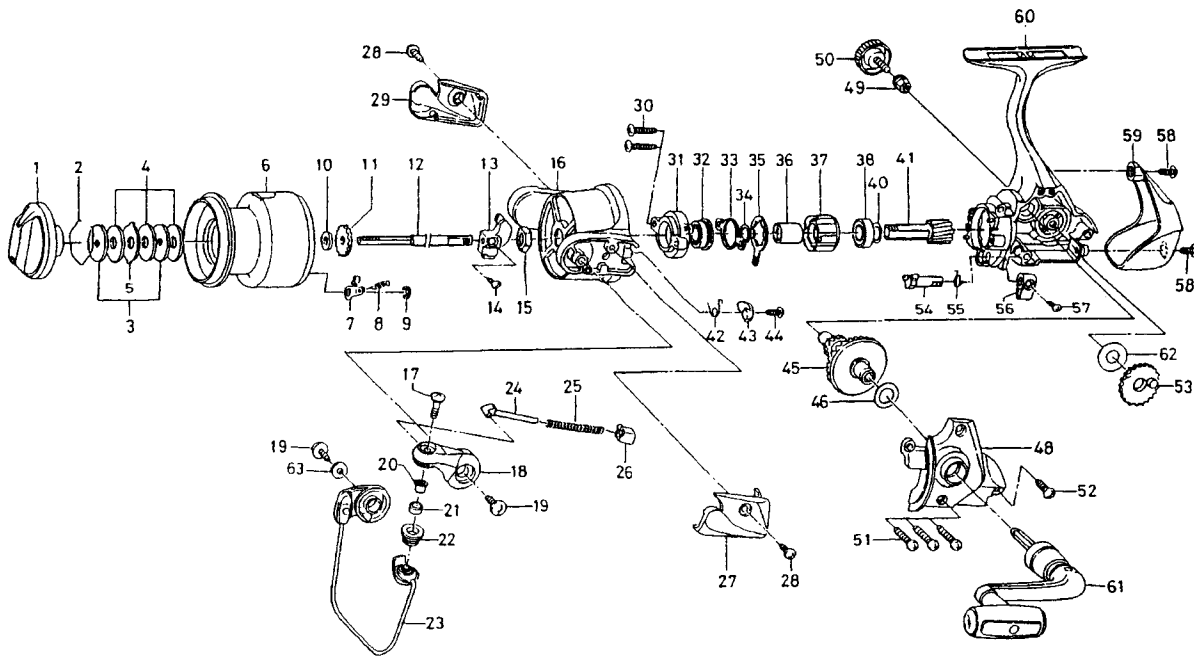


REGAL S2500C



| Key No. | Parts No. | Parts Name | Key No. | Parts No. | Parts Name |
|---------|-----------|-------------------------|---------|-----------|------------------------|
| 1 | F77-7608 | DRAG KNOB | 32 | F22-6701 | BALL BEARING A |
| 2 | F37-3301 | DRAG WASHER RET | 33 | F67-7301 | ROLLER CLUTCH RET A |
| 3 | E46-7201 | KEY WASHER | 34 | 375-8509 | ROLLER CLUTCH RET B |
| 4 | E13-6001 | DRAG WASHER | 35 | G03-6901 | ROLLER CLUTCH RET B |
| 5 | 373-3603 | EARED WASHER | 36 | F73-2501 | SPACING SLEEVE |
| 2-9 | G17-2201 | SPOOL | 37 | F62-2001 | ROLLER CLUTCH |
| 7 | B07-5304 | CLICK PAWL | 38 | 634-1301 | BALL BEARING B |
| 8 | E40-3101 | CLICK SPRING | 40 | 375-8504 | PINION WASHER |
| 9 | 320-5901 | CLICK RET | 41 | G01-6201 | PINION GEAR |
| 10 | E46-7101 | SPOOL WASHER | 42 | G01-7201 | BAIL TRIP LEVER SPRING |
| 11 | F81-1501 | CLICK GEAR | 43 | G01-7301 | BAIL TRIP LEVER |
| 12 | G01-6701 | MAIN SHAFT | 44 | G12-2401 | BAIL TRIP LEVER SCREW |
| 13 | G01-6501 | OSC SLIDER | 45 | G01-6601 | DRIVE GEAR |
| 14 | 351-0315 | OSC SLIDER SCREW | 46 | 375-8500 | DRIVE GEAR WASHER |
| 15 | F33-6102 | ROTOR NUT | 48 | G17-1901 | SIDE COVER |
| 16 | G01-7103 | ROTOR | 49 | F72-1001 | HANDLE COLLAR |
| 17 | G01-8601 | LINE ROLLER SCREW | 50 | F67-6502 | HANDLE SCREW |
| 18 | G01-7802 | BAIL ARM | 51 | E15-8602 | SIDE COVER SCREW A |
| 19 | B84-2102 | BAIL HOLDER SCREW | 52 | G14-4401 | SIDE COVER SCREW B |
| 20 | G15-2501 | LINE ROLLER COLLAR | 53 | F67-7401 | OSC GEAR |
| 21 | G17-3801 | LINE ROLLER BUSHING | 54 | G01-5901 | A/R CAM |
| 22 | F62-5002 | LINE ROLLER | 55 | G01-6101 | A/R CAM SPRING |
| 23 | G17-2001 | BAIL | 56 | G01-5802 | A/R LEVER |
| 24 | G01-7501 | BAIL SPRING SHAFT | 57 | G01-6001 | A/R LEVER SCREW |
| 25 | G01-7701 | BAIL SPRING | 58 | G27-0801 | REAR COVER SCREW |
| 26 | G01-7401 | BAIL SPRING HOLDER | 59 | G16-6801 | REAR COVER |
| 27 | G01-7903 | BAIL SPRING COVER | 60 | G17-1801 | BODY |
| 28 | E36-4202 | BAIL SPRING COVER SCREW | 61 | G17-2101 | HANDLE |
| 29 | G01-8503 | BAIL HOLDER COVER | 62 | F76-7700 | OSC GEAR WASHER |
| 30 | G25-2401 | BAIL HOLDER COVER SCREW | 63 | F40-1001 | BAIL HOLDER WASHER |
| 31 | G01-6401 | BEARING RET | | | |