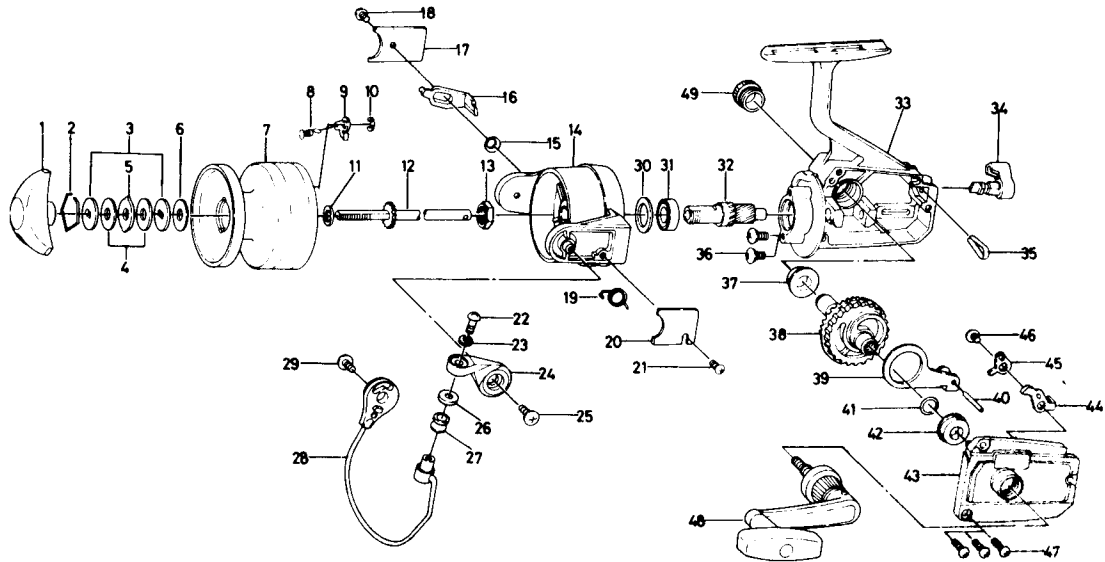


SPINNING REEL RS 1300/RS 1600



Key No.	Parts No.	Parts Name
1	740-2702	Drag knob
2	170-4001	Drag washer retainer
3	373-2502	Drag D washer
4	374-2901	Disc washer
5	375-5301	Drag A washer
6	370-6901	Drag washer A
7	734-1306	Spool
8	144-1211	Spool click claw spring
9	B07-5302	Spool click claw
10	320-5901	Spool click claw retainer
11	371-8331	Spool washer
12	B48-0001	Main shaft
13	B10-5701	Rotor nut
14	B47-9301	Rotor
15	B47-9501	Tension spring A
16	B18-4801	Bail kick lever
17	B47-9601	Bail kick lever cover
18	352-0401	Bail kick lever cover screw
19	B18-4401	Bail spring
20	B18-4601	Bail spring cover
21	352-0401	Bail spring cover screw
22	353-8201	Bail screw
23	375-1001	Bail washer
24	B18-4501	Arm lever
25	353-8201	Arm lever screw
26	501-1601	Roller collar
27	250-4221	Line roller
28	B47-9701	Bail
29	353-8201	Bail holder screw

Sold as one unit,
733-2709
Spool assembly

Key No.	Parts No.	Parts Name
30	B47-9201	Rotor washer
31	B54-6001	Ball bearing
32	B47-9101	Pinion gear
33	B47-8801	Body
34	B18-4101	Anti-reverse lever
35	B11-4301	Anti-reverse lever spring
36	353-8201	Ball bearing screw
37	B12-9001	Bearing
38	B47-9901	Drive gear
39	B11-6701	Oscillating slider
40	121-1211	Oscillating slider pin
41	373-0100	Drive gear washer
42	B12-9001	Bearing
43	B48-0201	Body cover
44	B48-0501	Anti-reverse claw
45	B50-1201	Anti-reverse claw plate
46	351-6102	Anti-reverse claw screw
47	351-5901	Body cover screw
48	B48-0601	Handle
49	B22-4501	Handle screw cap

RS1600 Special Parts

1	740-2103	Drag knob
2-10	B48-0901	Spool assembly
7	B48-1001	Spool
14	B48-2301	Rotor
28	B18-5001	Bail
33	B47-8802	Body
43	B48-0202	Body cover