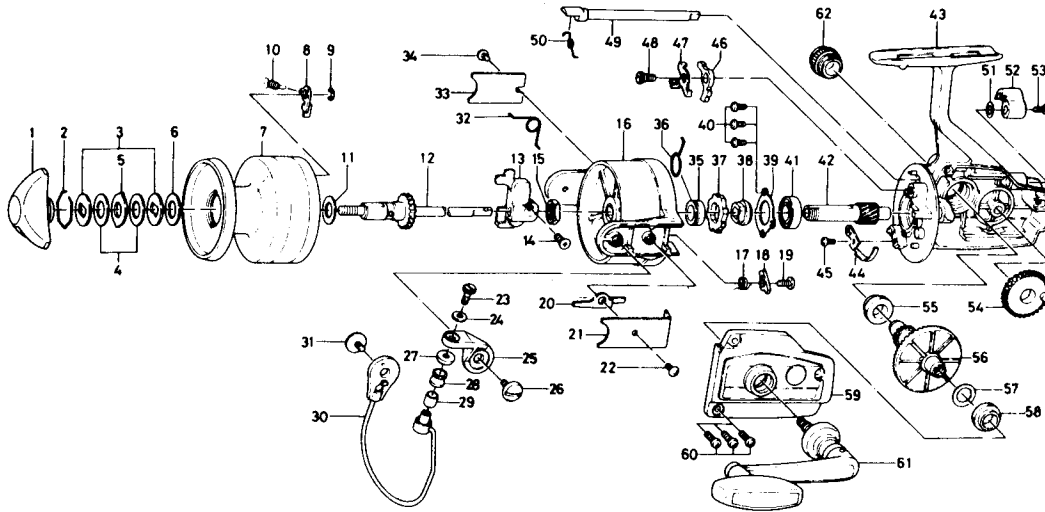


SPINNING REEL RG 7000



| Key No. | Parts No. | Parts Name | Key No. | Parts No. | Parts Name |
|---------|-----------|-----------------------------|---------|-----------|--------------------------------|
| 1 | 000-8237 | Drag knob | 32 | B21-1801 | Bail spring |
| 2 | 170-4511 | Drag washer retainer | 33 | 634-6802 | Bail spring cover |
| 3 | 376-0101 | Drag D washer | 34 | 351-6101 | Bail spring cover screw |
| 4 | 372-6504 | Disc washer | 35 | 502-1301 | Spring holder |
| 5 | 375-5401 | Drag A washer | 36 | B05-7301 | Anti-reverse claw spring |
| 6 | 372-3004 | Drag washer A | 37 | B10-0901 | Ratchet |
| 7 | B69-4901 | Spool | 38 | 636-6711 | Click gear |
| 8 | B07-8201 | Spool click claw | 39 | 050-5101 | Ball bearing ret. washer |
| 9 | 320-1402 | Spool click claw retainer | 40 | 351-6601 | Ball bearing ret. washer screw |
| 10 | 145-2101 | Spool click claw spring | 41 | 635-5001 | Ball bearing |
| 11 | B35-3301 | Spool washer | 42 | B05-6901 | Pinion gear |
| 12 | B05-8101 | Main shaft | 43 | B69-4001 | Body |
| 13 | B07-6001 | Oscillating slider | 44 | B22-9901 | Cam kick plate |
| 14 | 351-9001 | Oscillating slider screw | 45 | 351-6601 | Cam kick plate screw |
| 15 | B68-1701 | Rotor nut | 46 | B05-7101 | Anti-reverse claw |
| 16 | B05-7402 | Rotor | 47 | B01-5501 | Anti-reverse claw plate |
| 17 | 145-3001 | Bail kick cam spring | 48 | B05-7201 | Anti-reverse claw screw |
| 18 | 571-1101 | Bail kick cam | 49 | B15-6401 | Anti-reverse cam |
| 19 | 353-8201 | Bail kick cam screw | 50 | 144-0321 | Anti-reverse cam spring |
| 20 | B05-7501 | Bail kick lever | 51 | 373-2700 | Anti-reverse lever washer |
| 21 | B05-7602 | Bail kick lever cover | 52 | 541-7301 | Anti-reverse lever |
| 22 | 351-7701 | Bail kick lever cover screw | 53 | 352-2501 | Anti-reverse lever screw |
| 23 | 363-3111 | Bail screw | 54 | B08-1201 | Oscillating gear |
| 24 | 375-1101 | Bail washer | 55 | 501-6102 | Bearing |
| 25 | 231-3501 | Arm lever | 56 | B05-7901 | Drive gear |
| 26 | 363-5202 | Arm lever screw | 57 | 371-2800 | Drive gear washer |
| 27 | 501-2001 | Roller collar | 58 | 501-6102 | Bearing |
| 28 | 250-4501 | Line roller | 59 | B69-4401 | Body cover |
| 29 | 502-1401 | Roller metal | 60 | 353-6301 | Body cover screw |
| 30 | B05-7702 | Bail | 61 | B05-8402 | Handle |
| 31 | 363-5202 | Bail holder screw | 62 | 363-4702 | Handle screw cap |

Sold as one unit
Spool assembly
6-B05-8603