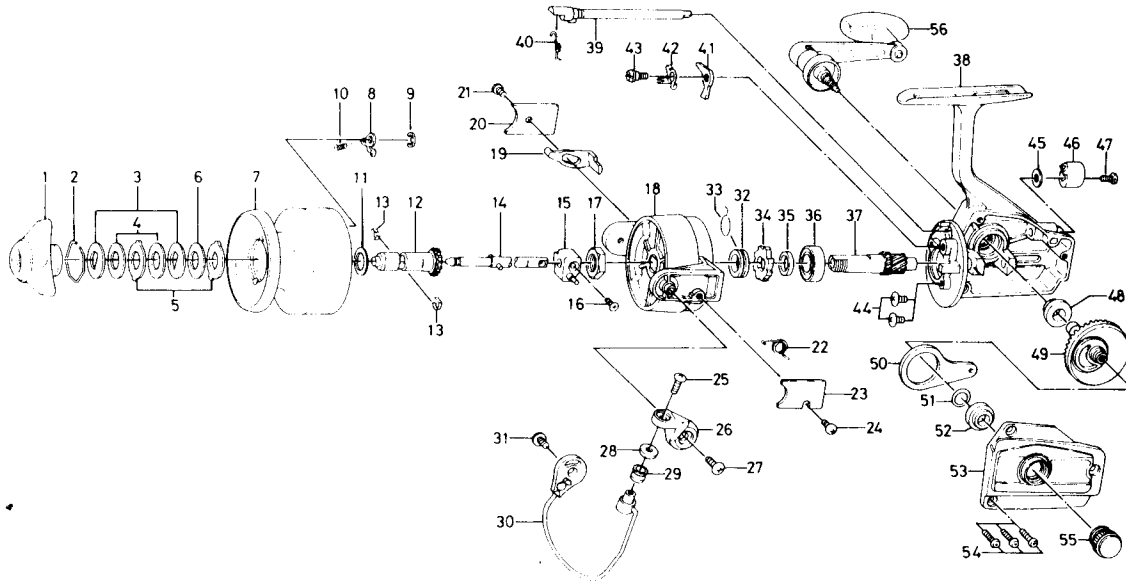


SPINNING REEL **RG1600**



Key No.	Parts No.	Parts Name	Key No.	Parts No.	Parts Name
1	740-3801	Drag knob	29	250-3921	Line roller
2	171-7701	Drag washer retainer	30	B68-6801	Bail
3	374-4802	Drag D washer	31	351-6101	Bail holder screw
4	373-3701	Disc washer	32	501-9901	Spring holder
5	373-3603	Drag A washer	33	145-0901	Anti-reverse cam spring
6	373-3704	Drag washer A	34	280-9001	Ratchet
7	B70-7001	Spool	35	501-9801	Spacer
8	B07-5302	Spool click claw	36	636-6011	Ball bearing
9	320-5901	Spool click claw retainer	37	B70-5701	Pinion gear
10	144-1211	Spool click claw spring	38	B70-5402	Body
11	375-5701	Spool washer	39	461-7107	Anti-reverse cam
12	720-1721	Spool metal	40	144-0321	Anti-reverse cam spring
13	151-7211	Spool metal leaf spring	41	111-8201	Anti-reverse claw
14	B70-5801	Main shaft	42	041-7101	Anti-reverse claw plate
15	637-0102	Oscillating support	43	363-9301	Anti-reverse claw screw
16	351-5311	Oscillating slider screw	44	351-6102	Ball bearing screw
17	B68-1701	Rotor nut	45	371-6903	Anti-reverse lever washer
18	B69-0201	Rotor	46	541-6801	Anti-reverse lever
19	B45-7401	Bail kick lever	47	353-4401	Anti-reverse lever screw
20	B68-1301	Bail kick lever cover	48	637-4512	Bearing
21	352-0401	Bail kick lever cover screw	49	414-1313	Drive gear
22	B18-7702	Bail spring	50	481-2101	Oscillating slider
23	B68-1201	Bail spring cover	51	375-8500	Drive gear washer
24	352-0401	Bail spring cover screw	52	637-4512	Bearing
25	B67-9302	Bail screw	53	B70-6002	Body cover
26	B68-1101	Arm lever	54	353-0001	Body cover screw
27	351-6101	Arm lever screw	55	B03-4803	Handle screw cap
28	B68-5702	Roller collar	56	B70-6801	Handle

Sold as one unit
Spool assembly
6-B70-6901