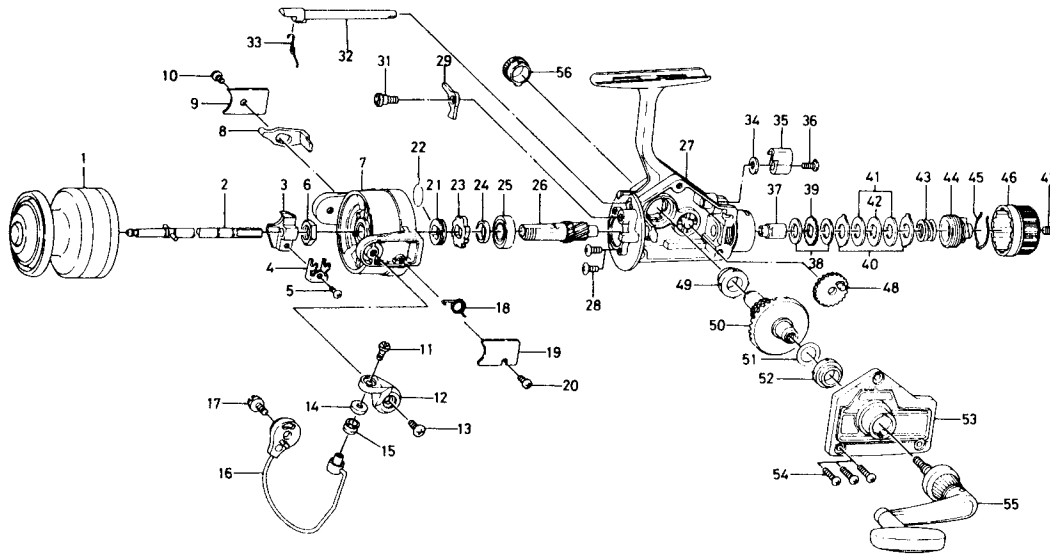


# SPINNING REEL **RG1350/RG1650**



Key No.	Parts No.	Parts Name
1	B67-7101	Spool
2	B67-6101	Main shaft
3	B67-6301	Oscillating slider
4	B62-0801	Oscillating slider ret. plate
5	351-1804	Oscillating slider ret. plate screw
6	B68-1701	Rotor nut
7	B69-0101	Rotor
8	B45-1001	Bail kick lever
9	B68-1301	Bail kick lever cover
10	352-0401	Bail kick lever cover screw
11	B67-9302	Bail screw
12	B68-1101	Arm lever
13	351-6101	Arm lever screw
14	B68-5702	Roller collar
15	250-3921	Line roller
16	B68-1401	Bail
17	351-6101	Bail holder screw
18	B18-7702	Bail spring
19	B68-1201	Bail spring cover
20	352-0401	Bail spring cover screw
21	501-9901	Spring holder
22	145-0901	Anti-reverse claw spring
23	280-9001	Ratchet
24	501-9801	Spacing sleeve
25	636-6011	Ball bearing
26	B70-5701	Pinion gear
27	B67-3603	Body
28	351-6102	Ball bearing screw
29	B74-5501	Anti-reverse claw
31	363-9301	Anti-reverse claw screw
32	B67-4101	Anti-reverse cam

Key No.	Parts No.	Parts Name
33	144-0321	Anti-reverse cam spring
34	371-6903	Anti-reverse lever washer
35	541-6801	Anti-reverse lever
36	353-4401	Anti-reverse lever screw
37	B48-9802	Drag washer holder
38	B48-9901	Drag washer A
39	B49-0001	Click gear
40	B49-0101	Drag washer B
41	B49-0201	Drag washer C
42	B49-0301	Drag washer D
43	B67-8501	Drag washer spring
44	B67-5601	Drag screw
45	B67-5701	Drag washer retainer
46	B67-5801	Drag knob
47	352-1105	Drag knob screw
48	413-4501	Oscillating gear
49	501-6101	Bearing
50	B70-7201	Drive gear
51	371-2800	Drive gear adjusting washer
52	501-6101	Bearing
53	B67-6403	Body cover
54	351-8501	Body cover screw
55	B48-0601	Handle
56	B68-2601	Handle screw cap

### Special parts for RG1650

1	B67-8101	Spool
7	B69-0201	Rotor
8	B45-7401	Bail kick lever
16	B68-6801	Bail
27	B67-3604	Body
53	B67-6404	Body cover