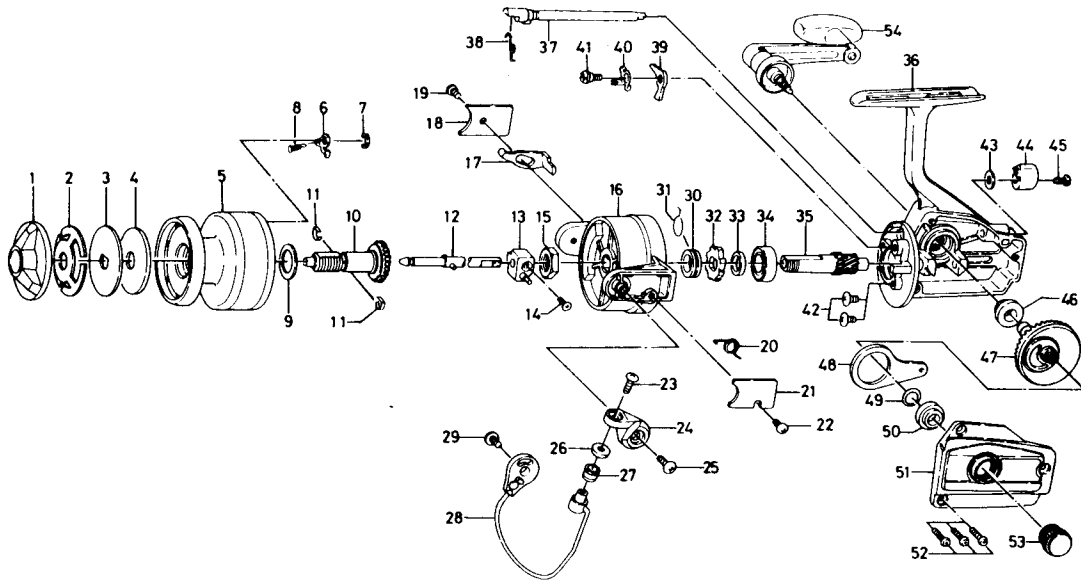


# SPINNING REEL **RG 1300**



| Key No. | Parts No. | Parts Name                  | Key No. | Parts No. | Parts Name                |
|---------|-----------|-----------------------------|---------|-----------|---------------------------|
| 1       | B44-0303  | Drag knob                   | 28      | B68-1401  | Bail                      |
| 2       | B44-0201  | Drag washer spring          | 29      | 351-6101  | Bail holder screw         |
| 3       | B44-0101  | Drag D washer               | 30      | 501-9901  | Spring holder             |
| 4       | B44-0001  | Disc washer                 | 31      | 145-0901  | Anti-reverse claw spring  |
| 5       | B70-6401  | Spool                       | 32      | 280-9001  | Ratchet                   |
| 6       | B07-5302  | Spool click claw retainer   | 33      | 501-9801  | Spacer                    |
| 7       | 320-5901  | Spool click claw            | 34      | 636-6011  | Ball bearing              |
| 8       | 144-1211  | Spool click claw spring     | 35      | B70-5701  | Pinion gear               |
| 9       | B43-9901  | Spool washer                | 36      | B70-5401  | Body                      |
| 10      | Z00-0568  | Spool metal                 | 37      | 461-7107  | Anti-reverse cam          |
| 11      | 151-9501  | Spool metal leaf spring     | 38      | 144-0321  | Anti-reverse cam spring   |
| 12      | B70-5801  | Main shaft                  | 39      | 111-8201  | Anti-reverse claw         |
| 13      | 637-0102  | Oscillating support         | 40      | 041-7107  | Anti-reverse claw plate   |
| 14      | 351-5311  | Oscillating support screw   | 41      | 363-9301  | Anti-reverse claw screw   |
| 15      | B68-1701  | Rotor nut                   | 42      | 351-6102  | Ball bearing screw        |
| 16      | B69-0101  | Rotor                       | 43      | 371-6903  | Anti-reverse lever washer |
| 17      | B45-1001  | Bail kick lever             | 44      | 541-6801  | Anti-reverse lever        |
| 18      | B68-1301  | Bail kick lever cover       | 45      | 353-4401  | Anti-reverse lever screw  |
| 19      | 352-0401  | Bail kick lever cover screw | 46      | 637-4512  | Bearing                   |
| 20      | B18-7702  | Bail spring                 | 47      | 414-1313  | Drive gear                |
| 21      | B68-1201  | Bail spring cover           | 48      | 481-2101  | Oscillating slider        |
| 22      | 352-0401  | Bail spring cover screw     | 49      | 375-8500  | Drive gear washer         |
| 23      | B67-9302  | Bail screw                  | 50      | 637-4512  | Bearing                   |
| 24      | B68-1101  | Arm lever                   | 51      | B70-6001  | Body cover                |
| 25      | 351-6101  | Arm lever screw             | 52      | 353-0001  | Body cover screw          |
| 26      | B68-5702  | Roller collar               | 53      | 803-4803  | Handle screw cap          |
| 27      | 250-3921  | Line roller                 | 54      | B70-6201  | Handle                    |

Sold as one unit  
Spool assembly  
6-B70-6301