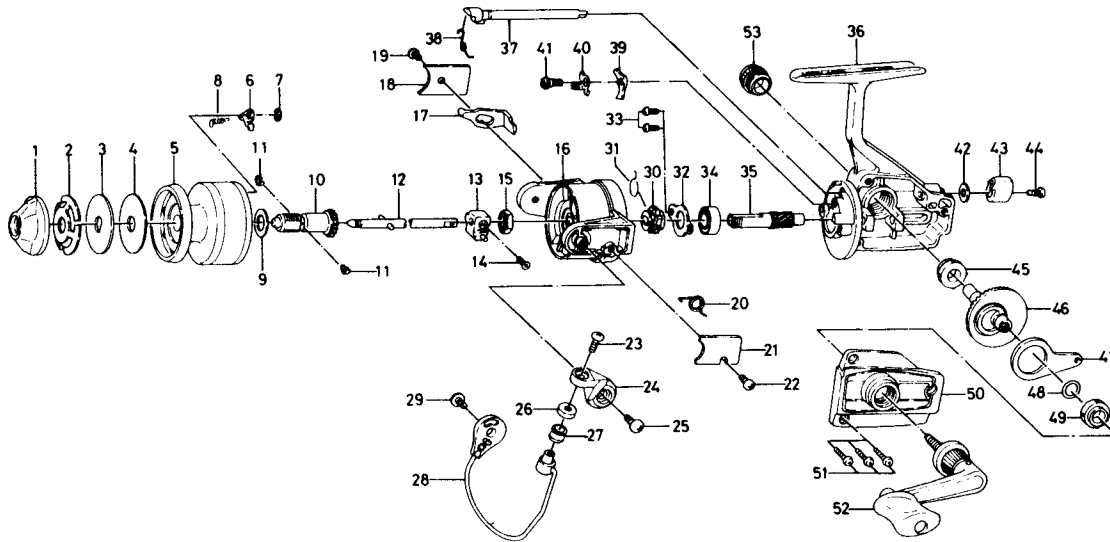


SPINNING REEL **RG 1000**



Key No.	Parts No.	Parts Name	Key No.	Parts No.	Parts Name
1	441-5301	Drag knob	28	B68-9801	Bail
2	151-7301	Drag spring washer	29	351-6101	Bail holder screw
3	375-6001	Drag D washer	30	280-8901	Ratchet
4	375-5903	Disc washer	31	145-0501	Anti-reverse claw spring
5	B69-7101	Spool	32	321-0801	Ball bearing ret. washer
6	B07-5302	Spool click claw	33	351-0903	Ball bearing ret. washer screw
7	320-5901	Spool click claw retainer	34	636-6401	Ball bearing
8	144-1211	Spool click claw spring	35	403-0701	Pinion gear
9	375-5701	Spool washer	36	B69-5901	Body
10	Z00-0571	Spool metal	37	461-7302	Anti-reverse cam
11	151-7211	Spool metal leaf spring	38	145-2701	Anti-reverse cam spring
12	B33-5302	Main shaft	39	111-8301	Anti-reverse claw
13	636-7602	Oscillating support	40	041-6801	Anti-reverse claw plate
14	351-0311	Oscillating slider screw	41	363-8801	Anti-reverse claw screw
15	B67-9401	Rotor nut	42	371-6903	Anti-reverse lever washer
16	B69-6201	Rotor	43	541-6801	Anti-reverse lever
17	B70-5301	Bail kick lever	44	353-4401	Anti-reverse lever screw
18	B68-1301	Bail kick lever cover	45	637-4512	Bearing
19	352-0401	Bail kick lever cover screw	46	414-0013	Drive gear
20	B18-7702	Bail spring	47	481-1801	Oscillating slider
21	B68-1201	Bail spring cover	48	375-8500	Drive gear washer
22	352-0401	Bail spring cover screw	49	637-4512	Bearing
23	B67-9302	Bail screw	50	B69-6301	Body cover
24	B68-9701	Arm lever	51	353-0001	Body cover screw
25	351-6101	Arm lever screw	52	B69-6501	Handle
26	B68-6702	Roller collar	53	B03-4803	Handle screw cap
27	250-3921	Line roller			

Sold as one unit
Spool assembly
6-B69-7001