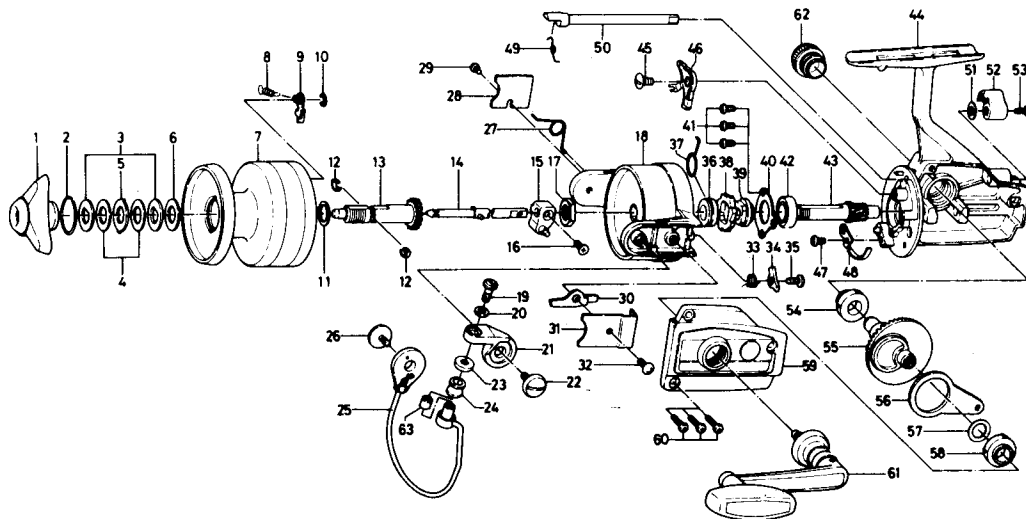




SPINNING REEL REGAL D2600 & D2600SC



SPECIAL PARTS FOR D2600SC 280-9602 RATCHET

Key No.	Parts No.	Parts Name	
1	740-4401	Drag knob	
2	170-4601	Drag washer retainer	
3	376-4001	Drag D washer	
4	375-7802	Disc washer	
5	375-8002	Drag A washer	Sold as one unit
6	375-7803	Drag washer A	Spool assembly
7	734-6304	Spool	6-734-5502
8	145-2101	Spool click claw spring	
9	B07-8201	Spool click claw	
10	320-1402	Spool click claw retainer	
11	376-3901	Spool washer	
12	151-9501	Spool metal leaf spring	
13	720-3101	Spool metal	
14	711-5501	Main shaft	
15	637-3001	Oscillating support	
16	351-8901	Oscillating slider screw	
17	B10-5701	Rotor nut	
18	202-1615	Rotor	
19	363-3111	Bail screw	
20	375-1101	Bail washer	
21	231-3501	Arm lever	
22	363-5201	Arm lever screw	
23	501-2001	Roller collar	
24	250-4501	Line roller	
25	725-8513	Bail	
26	363-5201	Bail holder screw	
27	145-2001	Bail spring	
28	041-8801	Bail spring cover	
29	351-6101	Bail spring cover screw	
30	571-1001	Bail kick lever	
31	041-8101	Bail kick lever cover	

Key No.	Parts No.	Parts Name
32	351-7701	Bail kick lever cover screw
33	145-0701	Bail kick cam spring
34	571-0901	Bail kick cam
35	351-4701	Bail kick cam screw
36	502-1301	Spring holder
37	145-2901	Anti-reverse claw spring
38	280-9501	Ratchet
39	636-6711	Click gear
40	635-9901	Ball bearing ret. washer
41	635-4801	Ball bearing
42	635-4801	Ball bearing
43	403-2801	Pinion gear
44	B39-4801	Body
45	352-1102	Anti-reverse claw screw
46	B33-5601	Anti-reverse claw
47	351-6601	Cam kick plate screw
48	B22-9901	Cam kick plate
49	144-0321	Anti-reverse cam spring
50	B15-6403	Anti-reverse cam
51	373-2700	Anti-reverse lever washer
52	541-7301	Anti-reverse lever
53	352-2501	Anti-reverse lever screw
54	501-6101	Bearing metal
55	414-2302	Drive gear
56	481-2401	Oscillating slider
57	371-2800	Drive gear washer
58	501-6101	Bearing metal
59	B39-4901	Body cover
60	351-5901	Body cover screw
61	748-1001	Handle
62	363-4701	Handle screw cap
63	502-1401	Roller metal