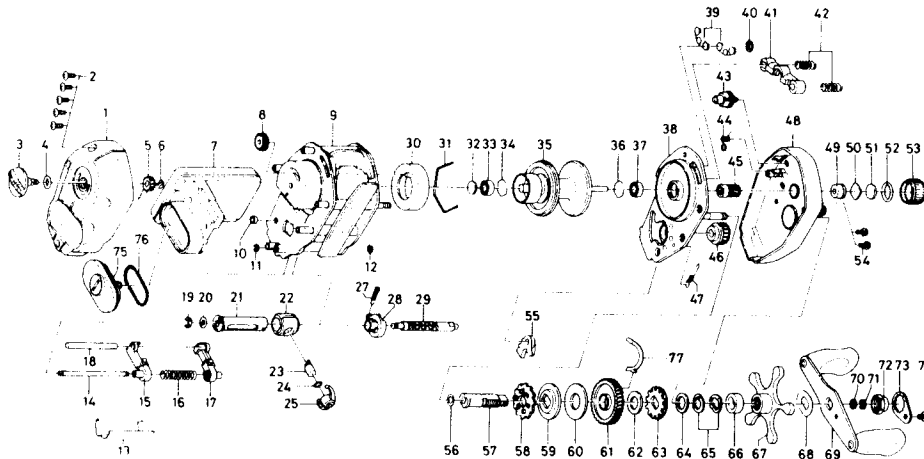


BAITCASTING REEL PT10E/15E



Key No.	Parts No.	Parts Name	Price Each	Key No.	Parts No.	Parts Name	Price Each
1	B98-4601	Left side plate	4.10	45	B87-0901	Pinion gear	7.65
2	B36-0402	Left side plate screw	0.50	46	B98-4301	Worm shaft gear	0.75
3	B98-5001	Brake adjusting knob	0.75	47	B35-8901	Anti-reverse pawl spring	0.50
4	637-0601	"O" ring A	0.60	48	B98-3301	Right side plate	13.85
5	B98-5101	Brake adjusting gear	0.70	49	B64-3101	Bush	0.60
6	320-4202	Brake adjusting gear retainer	0.40	50	B17-5401	Spool adjusting cap metal	0.40
7	B98-5301	IC indicator	30.60	51	B17-5501	Spacer	0.40
8	B98-5201	Idle gear	0.50	52	171-5201	"O" ring A	0.55
9	B98-5601	Frame	38.80	53	B35-7305	Cast control cap	1.55
10	B98-4501	Stabilizer bar collar	0.35	54	B36-0402	Set plate screw	0.50
11	B86-4101	Stabilizer bar retainer	0.35	55	B68-2801	Anti-reverse pawl	1.05
12	B86-4101	Stabilizer bar retainer	0.35	56	373-7611	Drive shaft washer A	0.40
13	B98-7201	Line guard	17.35	57	B35-9602	Drive shaft	2.10
14	B86-3501	Stabilizer bar A	1.05	58	B86-5101	Anti-reverse ratchet	1.10
15	B98-6901	Line guide A	3.65	59	B85-4801	Drive shaft washer B	0.60
16	B86-3601	Line guide spring	0.40	60	B36-0202	Drag washer A	0.50
17	B98-6601	Line guide B	3.65	61	E01-6802	Drive gear	15.90
18	B98-7101	Stabilizer bar B	4.60	62	375-7101	Drag washer B	0.35
19	320-5901	Worm shaft retainer	0.40	63	E04-9102	Key washer	1.50
20	373-1300	Worm shaft holder washer	0.40	64	373-7800	Drag washer C	0.35
21	E07-3901	Level wind guard	2.05	65	150-8901	Drag spring washer	0.40
22	B98-7301	Line guide pawl holder	1.50	66	634-5801	Spacing sleeve	0.40
23	B98-7601	Line guide pawl	0.55	67	B87-2801	Star drag	4.85
24	375-0800	Line guide washer	0.40	68	150-9001	Friction washer	0.40
25	B98-7701	Pawl cap	0.75	69	B85-5101	Handle assembly	4.40
27	B98-7801	Worm bearing spring	0.50	70	B41-1701	Drive shaft washer C	0.40
28	B98-7501	Worm bearing	0.45	71	320-8202	Drive shaft retainer	0.35
29	B98-7401	Worm shaft	5.50	72	341-5802	Handle nut	1.30
30	B98-7901	Magnet holder	10.35	73	040-3201	Handle nut plate	0.70
31	E06-0301	Magnet holder retaining ring	0.35	74	353-8302	Handle nut plate screw	0.45
32	375-7400	Spacer	0.35	75	B98-5501	Battery cover	12.40
33	B35-8601	Ball bearing	7.80	76	E02-0501	"O" ring B	0.35
34	B42-1601	Bearing retainer	0.40	77	E01-7401	Click spring	0.50
35	B98-8101	Spool	16.00	PT 15E Special Parts			
36	B42-1601	Bearing retainer	0.40	7	B98-5302	IC indicator	30.61
37	B35-8601	Ball bearing	7.80	9	B98-8801	Frame	38.90
38	B98-3801	Set plate	13.90	13	B98-9101	Line guard	17.40
39	B12-7601	Set plate spring	0.40	14	B98-8901	Stabilizer bar A	0.95
40	320-1402	Clutch ret. ring	0.40	16	B92-7201	Line guide spring	0.40
41	B35-9001	Yoke	0.75	18	B98-9001	Stabilizer bar B	3.25
42	144-7101	Yoke spring	0.50	21	E07-4001	Level wind guard	2.10
43	B98-3701	Line memo dial	2.60	29	B98-9201	Worm shaft	6.30
44	B98-4401	Line memo dial spring	0.35	35	B98-9301	Spool	16.00
				48	B98-8701	Right side plate	13.85