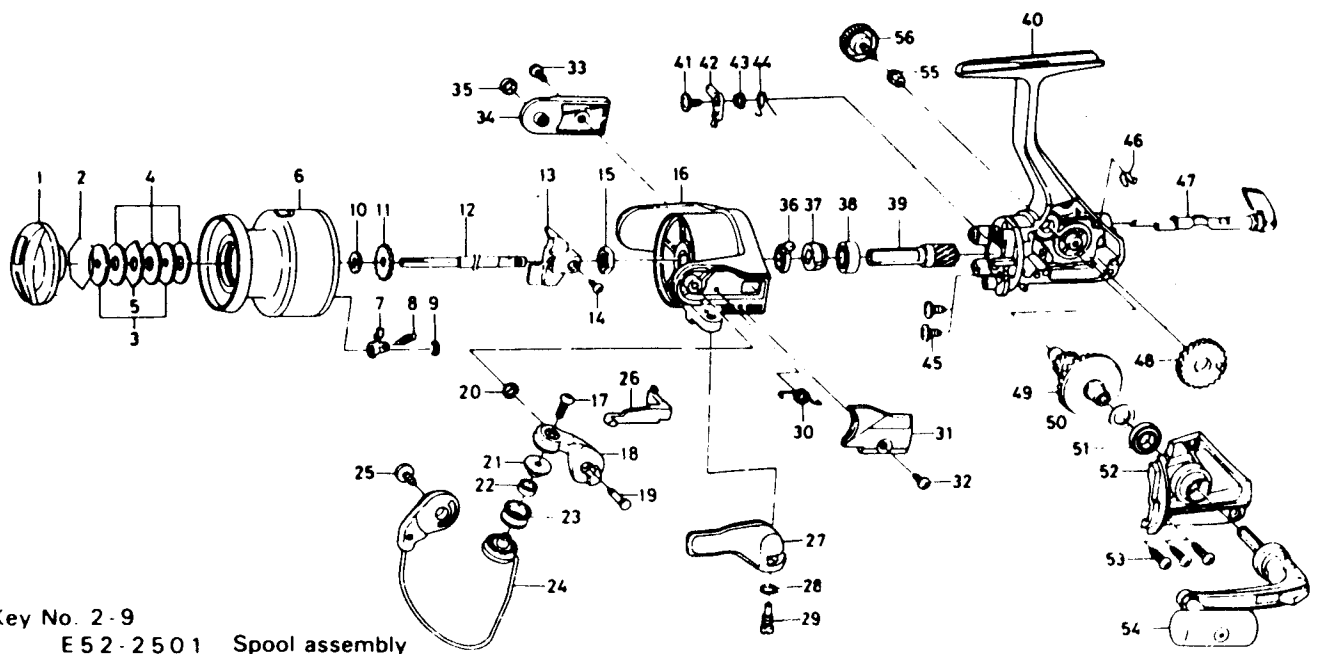


SPINNING REEL — PS705BL



Key No.	Parts No.	Parts Name
1	F 19-9101	Drag knob
2	171-7701	Drag washer retainer
3	E46-7201	Key washer
4	E13-6001	Drag washer
5	373-3603	Eared washer
6	E52-2601	Spool assembly
7	B07-5304	Click pawl
8	140-3101	Click spring
9	320-5901	Click retainer
10	L02-5001	Spool washer
11	270-6501	Click gear
12	E49-8401	Main shaft
13	F12-2301	Oscillating slider
14	351-0311	Oscillating block screw
15	341-9201	Rotor nut
16	E50-0905	Rotor
17	B67-9305	Line roller screw
18	F17-3101	Bail arm
19	E49-3501	Bail arm screw
20	320-5901	Bail arm screw retainer
21	F06-6301	Line roller collar
22	F05-5601	Ball bearing A
23	F05-8901	Line roller
24	F17-3201	Bail assembly
25	353-8208	Bail trip cam screw
26	E49-1401	Bail trip lever
27	E49-3403	Trigger lever
28	E36-9901	Trigger spring

Key No.	Parts No.	Parts Name
29	E37-0001	Trigger screw
30	E49-6801	Bail spring
31	E49-6301	Bail spring cover
32	E36-4201	Bail spring cover screw
33	L01-1701	Bail trip cover screw
34	F17-2901	Bail trip cover
35	F17-3001	Bail trip collar
36	F12-2101	Anti-reverse pawl spring A
37	E49-8501	Anti-reverse ratchet
38	634-1301	Ball bearing B
39	F12-1601	Pinion gear
40	F17-2202	Body assembly
41	F12-5701	Anti-reverse pawl screw
42	F12-1901	Anti-reverse pawl
43	F12-3501	Anti-reverse pawl collar
44	F12-3401	Anti-reverse pawl spring B
45	E03-7801	Bearing retainer screw
46	F12-2001	Anti-reverse cam spring
47	F08-5117	Anti-reverse lever
48	F12-2201	Oscillating gear
49	F12-1501	Drive gear
50	375-8500	Drive gear washer
51	634-1301	Ball bearing C
52	F16-2106	Side cover
53	E15-8601	Side cover screw
54	E52-2701	Handle assembly
55	501-8501	Handle collar
56	B92-5005	Handle lock screw