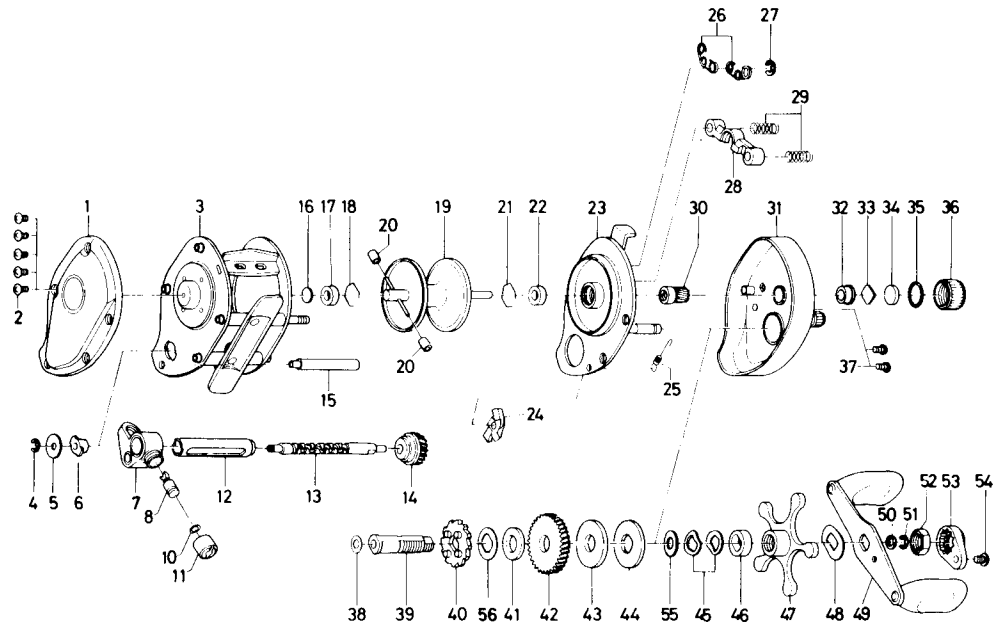


BAITCASTING REEL PS10G



Key No.	Parts No.	Parts Name	Key No.	Parts No.	Parts Name
1	B36-1304	Left side plate	29	144-7101	Yoke spring
2	B36-0401	Left side plate screw	30	B87-0901	Pinion gear
3	E18-3101	Frame assembly	31	E09-6902	Right side plate
4	320-5901	Worm shaft retainer	32	B64-3101	Bushing B
5	376-1801	Worm shaft holder washer	33	B17-5401	Spool adjusting cap metal
6	B71-5601	Worm bearing	34	B17-5501	Spacer B
7	B57-8701	Line guide	35	171-5201	"O" ring
8	B91-2601	Line guide pawl	36	B35-7304	Cast control cap
10	375-4100	Line guide washer	37	B36-0401	Set plate screw
11	342-4801	Pawl cap	38	373-76 11	Drive shaft washer A
12	B99-1801	Level wind guard	39	B35-9602	Drive shaft
13	B99-1901	Worm shaft	40	B86-5101	Anti-reverse ratchet
14	B99-2001	Worm shaft gear	41	375-7103	Drag washer A
15	B36-3401	Stabilizer bar	42	B85-2101	Drive gear
16	375-7400	Spacer A	43	B36-0202	Drag washer B
17	B55-0301	Bushing A	44	B36-0301	Key washer
18	B42-1601	Bearing retainer	45	150-8901	Drag spring washer
19	E01-1502	Spool assembly	46	634-5801	Spacing sleeve
20	B35-2901	Brake collar	47	B57-8201	Star drag
21	B42-1601	Bearing retainer	48	150-9001	Friction washer
22	B55-0301	Bushing A	49	E09-7001	Handle assembly
23	B57-7903	Set plate	50	B41-1701	Drive shaft washer B
24	B68-2801	Anti-reverse pawl	51	320-8202	Drive shaft retainer
25	B35-8901	Anti-reverse pawl spring	52	B43-3601	Handle nut
26	B12-7601	Set plate spring	53	B43-3902	Handle nut plate
27	320-1402	Clutch retaining ring	54	351-1801	Handle nut plate screw
28	B35-9001	Yoke	55	373-7803	Drag washer C
			56	B95-7501	Drive shaft washer C