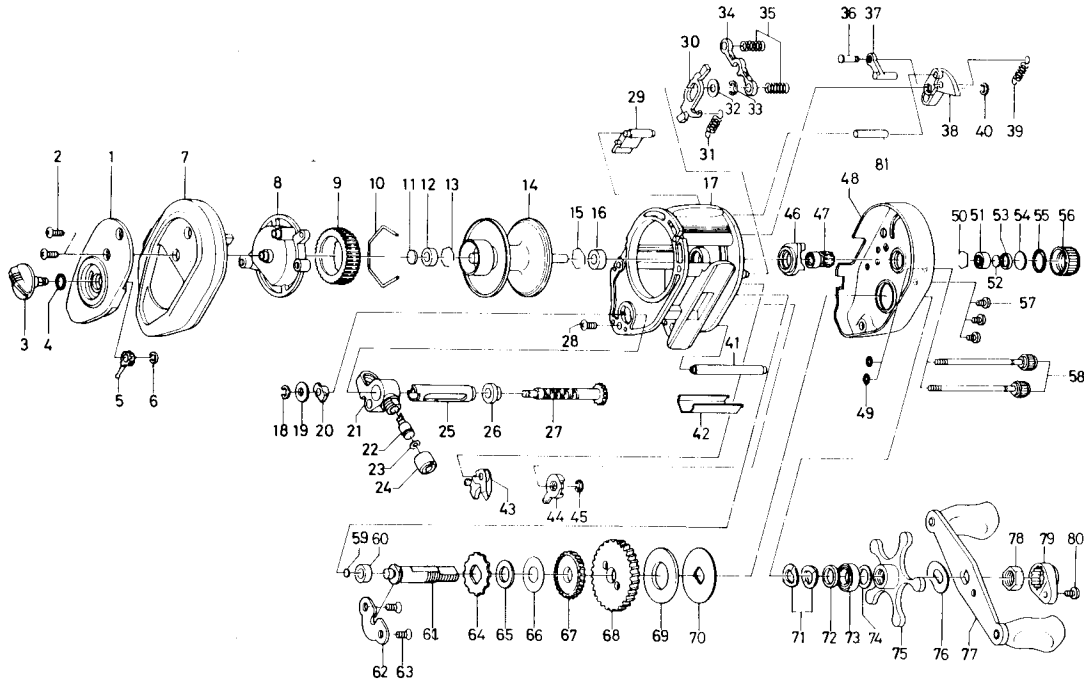


BAITCASTING REEL PR35



Key No.	Parts No.	Parts Name	Key No.	Parts No.	Parts Name
1	E20-0703	Left set plate A	42	E22-7501	Line guard
2	353-4402	Left side plate screw	43	E19-8101	Anti-reverse pawl
3	B98-5001	Brake adjusting knob	44	E22-7201	Anti-reverse lever
4	637-0601	"O" ring A	45	B33-9801	Anti-reverse lever retainer
5	B54-1701	Brake adjusting gear	46	E19-6901	Yoke plate
6	320-4202	Brake adjusting gear retainer	47	E19-7901	Pinion gear
7	E20-0402	Left side plate	48	E19-4903	Right side plate
8	E20-0501	Left set plate B	49	B85-3101	Right side plate screw washer
9	B66-1202	Magnet holder	50	E21-9701	Bearing retainer C
10	B54-3201	Magnet holder ret. ring	51	E08-8001	Ball bearing A
11	375-7405	Spacer A	52	374-9102	Spool adjusting cap metal
12	B55-0301	Bushing A	53	E23-0501	Spacer
13	B42-1601	Bearing retainer A	54	B17-5501	Spool tension spring
14	E22-7701	Spool assembly	55	171-5201	"O" ring B
15	B42-1601	Bearing retainer B	56	B85-3401	Cast control cap
16	E20-9001	Bushing B	57	353-4402	Set plate screw
17	E22-6601	Frame assembly	58	B91-1702	Right side plate screw
18	320-5901	Worm shaft retainer	59	B12-0201	Drive shaft washer A
19	376-1801	Worm shaft holder washer	60	B55-0301	Bushing C
20	B71-5601	Worm bearing A	61	E19-8401	Drive shaft
21	E20-8401	Line guide	62	E19-9401	Drive shaft retainer
22	121-4212	Line guide pawl	63	B39-5503	Drive shaft retainer screw
23	375-4100	Line guide washer	64	E19-9901	Anti-reverse ratchet
24	342-4802	Pawl cap	65	375-7101	Drive shaft washer B
25	B99-2101	Level wind guard	66	B96-7401	Drag washer A
26	E19-9501	Worm bearing B	67	E20-0001	Worm drive gear
27	E22-7301	Worm shaft	68	E20-0101	Drive gear
28	353-4401	Stabilizer bar screw	69	375-9403	Drag washer B
29	E20-3701	Set plate spacer	70	B20-0201	Key washer
30	E19-7601	Clutch trip plate	71	150-8901	Drag spring washer
31	E19-7701	Clutch trip plate spring	72	E20-8501	Spacing sleeve
32	371-6903	Clutch trip plate washer	73	E15-4001	Ball bearing B
33	320-1402	Clutch trip plate retainer	74	B68-4402	Drag washer C
34	E19-7801	Yoke	75	B86-4205	Star drag
35	E23-6401	Yoke spring	76	150-9001	Friction washer
36	E19-7201	Clutch trip plate arm pin	77	B85-5102	Handle assembly
37	E19-7101	Clutch trip plate arm	78	B86-2101	Handle nut
38	E19-7001	Clutch cam	79	B86-2301	Handle nut plate
39	E19-7501	Clutch cam spring	80	351-1803	Handle nut plate screw
40	B33-9801	Clutch cam retainer	81	E19-6801	Stabilizer bar B
41	E22-7601	Stabilizer bar A			