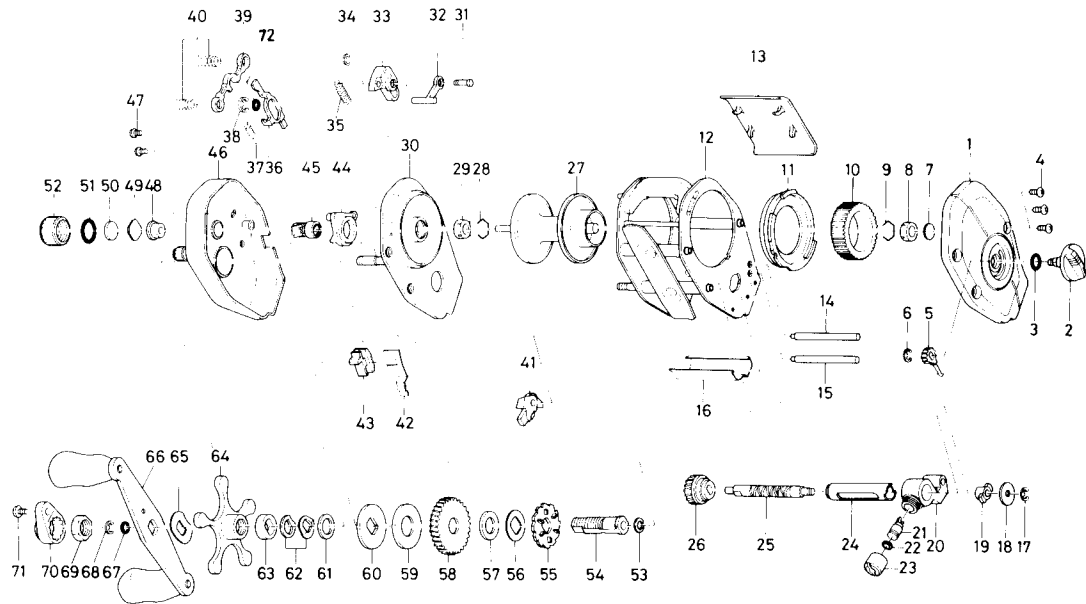


BAITCASTING REEL PR10GL/15GL



Key No.	Parts No.	Parts Name
1	E20-6201	Right side plate
2	B98-5001	Brake adjusting knob
3	637-0601	"O" ring A
4	B36-0401	Right side plate screw
5	B54-1701	Brake adjusting gear
6	320-5901	Brake adjusting gear retainer
7	375-7400	Spacer A
8	B55-0301	Graphite bushing
9	B42-1601	Bearing retainer
10	B66-1201	Magnet holder
11	E03-1601	Magnet holder collar
12	E20-6501	Frame assembly
13	E10-5508	Parming plate
14	E03-1401	Stabilizer bar A
15	E03-1402	Stabilizer bar B
16	B98-7202	Line guard
17	320-5901	Worm shaft retainer
18	376-1801	Worm shaft holder washer
19	B71-5601	Worm bearing
20	E02-3202	Line guide
21	121-4212	Line guide pawl
22	375-4100	Line guide washer
23	342-4801	Pawl cap
24	B99-1801	Level wind guard
25	B99-1901	Worm shaft
26	E20-6001	Worm shaft gear
27	E20-7001	Spool assembly
28	B42-1601	Bearing retainer
29	B55-0301	Graphite bushing
30	E20-4501	Set plate
31	E20-5501	Clutch trip plate arm pin
32	E19-7102	Clutch trip plate arm
33	E20-5301	Clutch cam
34	B33-9801	Clutch cam retainer
35	E19-7501	Clutch cam spring
36	E20-5601	Clutch trip plate
37	E19-7701	Clutch trip plate spring
38	320-1402	Clutch trip plate retainer
39	E19-7801	Yoke
40	144-7101	Yoke spring
41	B74-0501	Anti-reverse pawl
44	E20-5201	Yoke plate
45	E20-5701	Pinion gear

Key No.	Parts No.	Parts Name
46	E20-4101	Left side plate
47	B36-0401	Set plate screw
48	B64-3101	Bushing
49	B17-5401	Spool adjusting cap metal
50	B17-5501	Spacer B
51	171-5201	"O" ring B
52	B35-7305	Cast control cap
53	373-7611	Drive shaft washer A
54	B35-9602	Drive shaft
55	B90-7001	Anti-reverse ratchet
56	B95-7501	Drive shaft washer B
57	375-7103	Drag washer A
58	E20-6101	Drive gear
59	B36-0202	Drag washer B
60	B36-0301	Key washer
61	373-7803	Drag washer C
62	150-8901	Drag spring washer
63	634-5801	Spacing sleeve
64	B36-0504	Star drag
65	150-9001	Friction washer
66	B85-5101	Handle assembly
67	B41-1701	Drive shaft washer C
68	320-8202	Drive shaft retainer
69	B43-3601	Handle nut
70	B43-3903	Handle nut plate
71	351-1801	Handle nut plate screw
72	371-6903	Clutch trip plate retainer

PR15GL Special Parts

12	E20-6601	Frame assembly
13	E10-5708	Parming plate
14	E03-1501	Stabilizer bar A
15	E03-1502	Stabilizer bar B
16	B98-9102	Line guard
24	399-2101	Level wind guard
25	B99-2201	Worm shaft
27	E20-7101	Spool assembly
30	E20-4502	Set plate
42	E20-4301	Anti-reverse lever spring (PR15GL only)
43	E20-4401	Anti-reverse lever (PR15GL only)
46	E20-4102	Left side plate