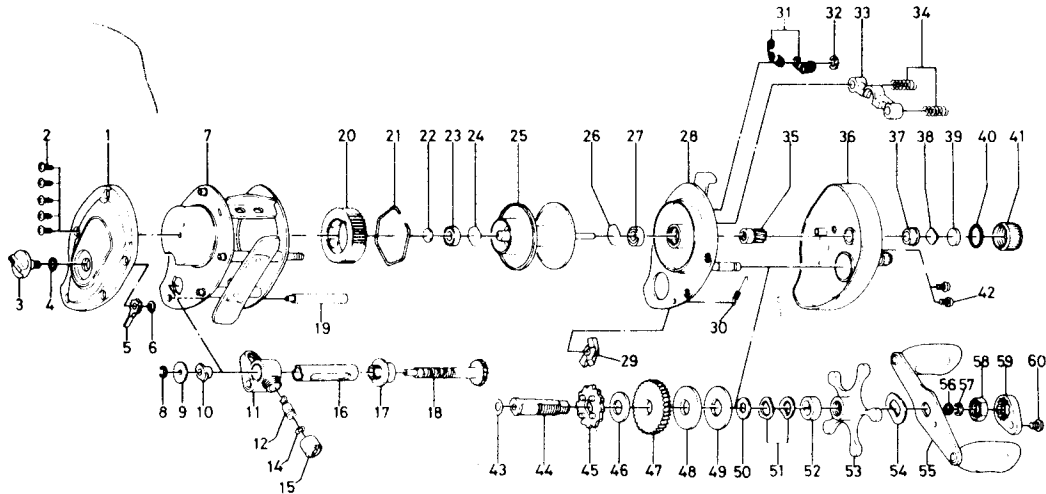




# BAITCASTING REEL PMF10S/15S



Key No.	Parts No.	Parts Name	Key No.	Parts No.	Parts Name
1	B54-1206	Left side cover	36	B71-2101	Right side cover
2	B36-0401	Left side cover screw	37	B64-3101	Bush
3	B66-1001	Brake adjusting knob	38	B17-5401	Spool adjusting cap metal A
4	637-0601	"O" ring	39	B17-5501	Spool adjusting cap metal B
5	B54-1701	Brake adjusting gear	40	171-5201	"O" ring
6	320-4202	Brake adjusting gear retainer	41	B35-7305	Right spool cap
7	B71-1601	Frame	42	B36-0401	Right side cover screw
8	320-5901	Worm shaft retainer	43	373-7611	Gear shaft washer A
9	376-1801	Worm shaft holder washer	44	B35-9602	Gear shaft
10	022-2201	Worm shaft holder	45	B35-9701	Ratchet
11	B57-8701	Line guide	46	375-7102	Gear shaft washer B
12	B71-0101	Line guide pin	47	B36-0101	Drive gear
14	375-4100	Line guide washer	48	B36-0202	Drag washer A
15	342-4801	Line guide nut	49	B36-0301	Drag washer B
16	B36-2601	Worm shield	50	373-7803	Drag washer C
17	B36-1201	Shield bush	51	150-8901	Spring washer
18	B36-3101	Worm shaft	52	634-5801	Spacing sleeve
19	B36-3401	Frame post	53	B57-8201	Star drag
20	B66-1201	Magnet holder	54	150-9001	Handle washer
21	B54-3201	Magnet holder ret.	55	B46-5801	Handle
22	375-7400	Bearing metal washer	56	B41-1701	Handle nut washer
23	B55-0301	Bearing	57	320-8202	Handle nut retainer
24	B42-1601	Bearing retainer	58	B43-3601	Handle nut
25	B54-3304	Spool	59	B43-3901	Handle nut plate
26	B42-1601	Bearing retainer	60	351-1801	Handle nut plate screw
27	B55-0361	Bearing			
28	B57-2901	Set plate			
29	B68-2801	Anti-reverse claw			
30	B35-8901	Clutch spring			
31	B36-8101	Set plate spring			
32	B39-1401	Clutch set ring			
33	B35-8901	Pusher yoke			
34	144-2101	Pusher yoke spring			
35	B64-2901	Pusher gear			

Special parts for PMF15S		
7	B71-2201	Frame
16	B36-4101	Worm shield
18	B36-3102	Worm shaft
19	B36-4401	Frame post
25	B54-5904	Spool
36	B71-2102	Right side cover