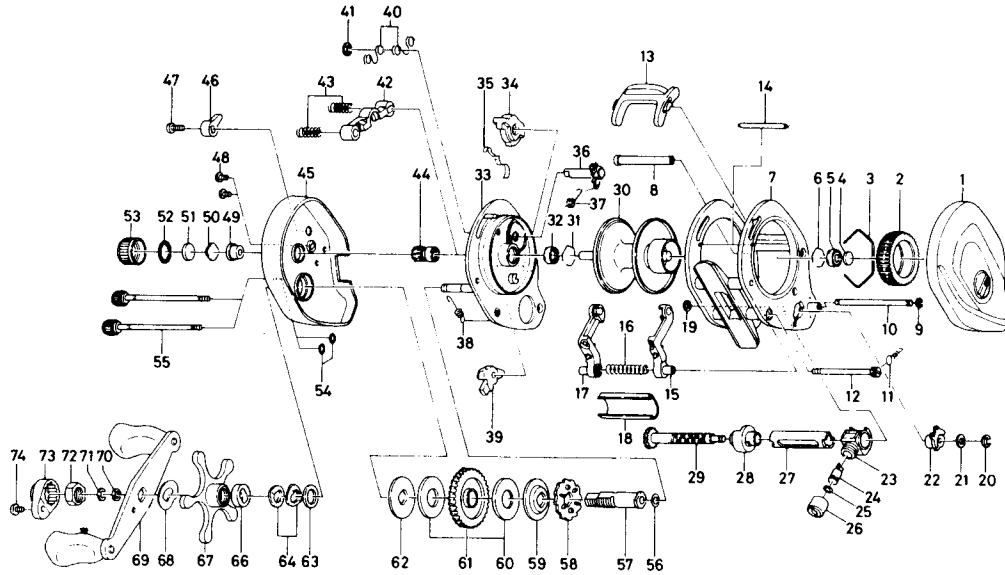


BAITCASTING REEL PMA35SL



Key No.	Parts No.	Parts Name	Price Each	Key No.	Parts No.	Parts Name	Price Each
1	B90-7201	Right side plate	7.30	38	B35-8901	Anti-reverse pawl spring	0.50
2	B66-1202	Magnet holder	4.50	39	B74-0501	Anti-reverse pawl	1.10
3	B54-3201	Magnet holder ret. ring	0.45	40	B81-5503	Set plate spring	0.40
4	375-7405	Spacer	0.50	41	320-1402	Clutch ret. ring	0.40
5	B55-0301	Bearing	1.30	42	B90-6601	Yoke	0.75
6	B42-1601	Bearing retainer	0.40	43	144-7101	Yoke spring	0.50
7	B90-8601	Frame	17.60	44	B90-6701	Pinion gear	8.80
8	B85-9603	Frame post A	1.85	45	B90-5902	Left side plate	13.00
9	B86-4101	Frame post retainer	0.35	46	B85-9501	Click button	0.95
10	B92-7101	Frame post B	0.90	47	351-1801	Click button screw	0.50
11	B86-3901	Frame post spring	0.40	48	B36-0401	Set plate screw	0.50
12	B92-7501	Frame post screw	0.95	49	B64-3101	Bush	0.60
13	B85-2303	Clutch lever	1.50	50	B17-5401	Spool adjusting cap metal A	0.40
14	B93-9101	Frame post C	1.00	51	B17-5501	Spool adjusting cap metal B	0.40
15	B94-7101	Line guide A	3.60	52	171-5201	"O" ring	0.55
16	B92-7201	Line guide spring	0.40	53	B85-3401	Cast control cap	1.30
17	B94-7201	Line guide B	3.60	54	B85-3101	Left side plate washer	0.40
18	B92-7301	Line guard	3.25	55	B91-1702	Left side plate screw	2.20
19	B86-4101	Frame post retainer	0.35	56	373-7611	Drive shaft washer A	0.40
20	320-5901	Worm shaft retainer	0.40	57	B86-5001	Drive shaft	2.80
21	373-1302	Worm shaft holder washer	0.40	58	B90-7001	Anti-reverse ratchet	0.60
22	B94-3701	Worm shaft holder	1.95	59	B85-4801	Drive shaft washer B	0.60
23	B94-7901	Line guide pawl holder	1.95	60	B36-0203	Drag washer A	0.50
24	B91-2601	Line guide pawl	1.15	61	B90-7101	Drive gear	7.80
25	375-4100	Line guide washer	0.40	62	B36-0301	Key washer	0.50
26	342-4801	Pawl cap	0.75	63	373-7800	Drag washer B	0.35
27	B85-9701	Level wind cap	2.45	64	150-8901	Drag spring washer	0.40
28	B92-9501	Worm bearing	0.70	66	634-5801	Spacing sleeve	0.40
29	B92-9601	Worm shaft	4.20	67	B36-0504	Star drag	4.75
30	B90-8801	Spool	16.00	68	150-9001	Friction washer	0.40
31	B42-1601	Bearing retainer	0.40	69	B85-5101	Handle assembly	4.40
32	B55-0301	Bearing	1.30	70	B41-1701	Drive shaft washer	0.40
33	B90-6101	Set plate	17.85	71	320-8202	Drive shaft retainer	0.35
34	B90-6901	Anti-reverse cam	1.10	72	B86-2101	Handle nut	0.80
35	B65-0501	Anti-reverse cam spring	0.40	73	B86-2301	Handle nut plate	0.60
36	B97-8401	Click claw	1.50	74	351-1801	Handle nut plate screw	0.50
37	B86-2201	Click claw spring	0.40				