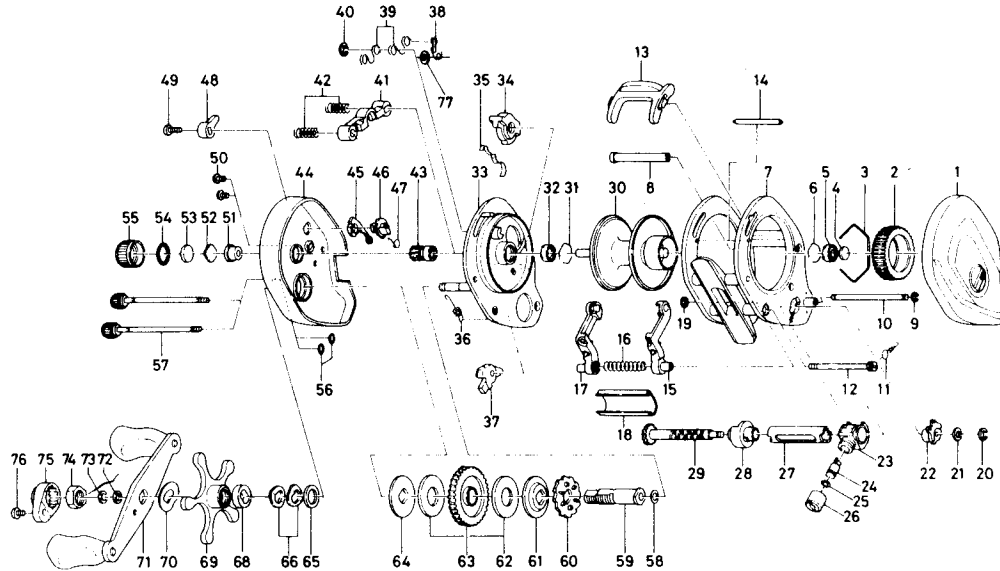


BAITCASTING REEL PMA33SL



Key No.	Parts No.	Parts Name	Price Each	Key No.	Parts No.	Parts Name	Price Each
1	B90-7201	Right side plate	7.30	39	B81-5503	Set plate spring B	0.40
2	B66-1202	Magnet holder	4.50	40	320-1402	Clutch ret. ring	0.40
3	B54-3201	Magnet holder ret. ring	0.45	41	B90-6601	Yoke	0.75
4	375-7405	Spacer	0.50	42	144-7101	Yoke spring	0.50
5	B55-0301	Bearing	1.30	43	B90-6701	Pinion gear	8.80
6	B42-1601	Bearing retainer	0.40	44	B90-5901	Left side plate	10.70
7	B90-7801	Frame	18.75	45	B90-7701	Flipping plate	0.40
8	B85-6204	Frame post A	1.70	46	B92-7401	Flipping cam	0.55
9	B86-4101	Frame post retainer	0.35	47	B93-0501	Flipping spring	0.40
10	B86-3501	Frame post B	1.05	48	B85-9501	Flipping lever	0.95
11	B86-3901	Frame post spring	0.40	49	351-1801	Flipping screw	0.50
12	B86-3801	Frame post screw	1.10	50	B36-0401	Set plate screw	0.50
13	B85-1503	Clutch lever	1.50	51	B64-3101	Bush	0.60
14	B93-9001	Frame post C	1.00	52	B17-5401	Spool adjusting cap metal A	0.40
15	B94-7101	Line guide A	3.60	53	B17-5501	Spool adjusting cap metal B	0.40
16	B86-3601	Line guide spring	0.40	54	B17-5201	"O" ring	0.55
17	B94-7201	Line guide B	3.60	55	B85-3401	Cast control cap	1.30
18	B86-3702	Line guard	4.30	56	B85-3101	Left side plate washer	0.40
19	B86-4101	Frame post retainer	0.35	57	B91-1701	Left side plate screw	2.20
20	320-5901	Worm shaft retainer	0.40	58	373-7611	Drive shaft washer A	0.40
21	373-1302	Worm shaft holder washer	0.40	59	B86-5001	Drive shaft	2.80
22	B94-3701	Worm shaft holder	1.95	60	B90-7001	Anti-reverse ratchet	0.60
23	B94-7901	Line guide pawl holder	1.95	61	B85-4801	Drive shaft washer B	0.60
24	B91-2601	Line guide pawl	1.15	62	B36-0203	Drag washer A	0.50
25	375-4100	Line guide washer	0.40	63	B90-7101	Drive gear	7.80
26	342-4801	Pawl cap	0.75	64	B36-0301	Key washer	0.50
27	B86-6301	Level wind cap	1.90	65	373-7800	Drag washer B	0.35
28	B92-9501	Worm bearing	0.70	66	B150-8901	Drag spring washer	0.40
29	B90-7601	Worm shaft	4.50	68	634-5801	Spacing sleeve	0.40
30	B90-8001	Spool	16.00	69	B36-0504	Star drag	4.75
31	B42-1601	Bearing retainer	0.40	70	B150-9001	Friction washer	0.40
32	B55-0301	Bearing	1.30	71	B85-5101	Handle assembly	4.40
33	B90-6501	Set plate	16.50	72	B41-1701	Drive shaft washer	0.40
34	B90-6901	Anti-reverse cam	1.10	73	320-8202	Drive shaft retainer	0.35
35	B65-0501	Anti-reverse cam spring	0.40	74	B86-2101	Handle nut	0.80
36	B35-8901	Anti-reverse pawl spring	0.50	75	B86-2301	Handle nut plate	0.60
37	B74-0501	Anti-reverse pawl	1.10	76	351-1801	Handle nut plate screw	0.50
38	B93-0701	Set plate spring A	0.40	77	B85-3001	Set plate spring washer	0.35