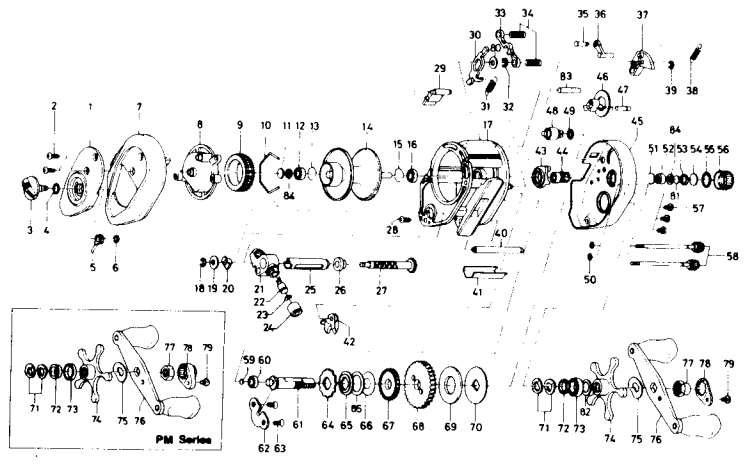


P > 3:8-1
C-3:8-1
SH-7.

BAITCASTING REEL

PT33C/33P/33SH, PR33C/33P/33SH, PM33C/33P/33SH

3.8-1 SH-1 7-1



PM33C Parts

Key No.	Parts No.	Parts Name
1	E20 0727	Left set plate A
2	353 4402	Left set plate screw
3	B98-5001	Brake adjusting knob
4	637-0601	"O" ring A
5	B54 1701	Brake adjusting gear
6	320 4202	Brake adjusting gear retainer
7	E20 0402	Left side plate
8	E20 0501	Left set plate B
9	B66 1202	Magnet holder
10	B54 3201	Magnet holder ret. ring
11	375 7405	Spacer A
12	B55 0301	Bushing A
13	B42-1601	Bearing retainer A
14	E23 6201	Spool assembly
15	B42 1601	Bearing retainer B
16	E20 9001	Bushing B
17	E30 7501	Frame assembly
18	320 5901	Worm shaft retainer
19	376 1801	Worm shaft holder washer
20	B71 5601	Worm bearing A
21	E20 8401	Line guide
22	121 4212	Line guide pawl
23	373 1300	Line guide washer
24	342 4802	Pawl cap
25	B99-1801	Level wind guard
26	E19-9501	Worm bearing B
27	E19 9601	Worm shaft
28	353 4401	Stabilizer bar screw
29	E20 3701	Set plate spacer
30	E19 7601	Clutch trip plate
31	E19 7701	Clutch trip plate spring
32	320-1402	Clutch trip plate retainer
33	E30 4301	Yoke
34	E23 6401	Yoke spring
35	E19 7201	Clutch trip plate arm pin
36	E19 7101	Clutch trip plate arm
37	E19 7001	Clutch cam
38	E19 7501	Clutch cam spring
39	B33 9801	Clutch cam retainer
40	E19 9801	Stabilizer bar A
41	E20 3502	Line guard
42	E19 8101	Anti reverse pawl
43	E19 6901	Yoke plate
44	F02 4401	Pinion gear
45	E39 0102	Right side plate
46	E19 7302	Flipping/casting selector
47	E19 7401	Flipping/casting selector pin
50	B85 3101	Right side plate screw retainer
51	F03 2201	Bearing retainer C
52	E28 0201	Bushing C
53	F02 4001	Spacer B
54	B17 5501	Spacer C
55	171 5201	"O" ring B
56	B85 3401	Cast control cap
57	353 4402	Set plate screw
58	B91 1701	Right side plate screw
59	B12 0201	Drive shaft washer
60	B55 0301	Bushing D
61	E30 4601	Drive shaft A
62	E19 9401	Drive shaft retainer
63	B39-5503	Drive shaft retainer screw
64	E19 9901	Anti-reverse ratchet
65	E30 4701	Drive shaft washer
66	B96 7401	Drag washer A
67	E30 4801	Worm drive gear
68	F02 4601	Drive gear
69	375 9405	Drag washer B
70	E20 0201	Key washer
71	150 8901	Drag spring washer
72	E32 6301	Spacing sleeve
73	E32 6401	Bushing E
74	B86 4205	Star drag
75	150 9001	Friction washer
76	E39 0401	Handle assembly
77	B86 2101	Handle nut
78	B86 2301	Handle nut plate
79	351-1803	Handle nut plate screw
80	371 6903	Clutch trip plate washer
81	374 9102	Spool adjusting cap metal
83	E19 6801	Stabilizer bar B
84	E25 6101	Oiled washer
85	E30 6101	Drag washer C

Key No.

Parts No.

Parts Name

PM33P Special Parts.

44	E20 0714	Left set plate A
44	E19 7901	Pinion gear
45	E32 6102	Right side plate
51	E21 9701	Bearing retainer C
53	E23 0501	Spacer B
68	E20 0101	Drive gear
76	B85 5101	Handle assembly

PM33SH Special Parts.

1	E20 0716	Left set plate A
44	E30 4401	Pinion gear
45	E32 6102	Right side plate
51	E21 9701	Bearing retainer C
53	E23 0501	Spacer B
68	E30 4901	Drive gear
76	E32 6201	Handle assembly

PR33C Special Parts.

1	E20-0726	Left set plate A
52	E08-8001	Ball bearing B
72	E38-9801	Spacing sleeve
73	E15-4001	Ball bearing C
82	B68-4402	Sealing washer

PR33P Special Parts.

1	E20-0711	Left set plate A
44	E19-7901	Pinion gear
45	E32-6102	Right side plate
51	E21-9701	Bearing retainer C
52	E08-8001	Ball bearing B
53	E23-0501	Spacer B
68	E20-0101	Drive gear
72	E38-9801	Spacing sleeve
73	E15-4001	Ball bearing C
76	E85-5101	Handle assembly
82	B68-4402	Sealing washer

PR33SH Special Parts.

1	E20-0704	Left set plate A
44	E30-4401	Pinion gear
45	E32-6102	Right side plate
51	E21-9701	Bearing retainer C
52	E08-8001	Ball bearing B
53	E23-0501	Spacer B
68	E30-4901	Drive gear
72	E38-9801	Spacing sleeve
73	E15-4001	Ball bearing C
76	E32-6201	Handle assembly
82	B68-4402	Sealing washer

Key No.

Parts No.

Parts Name

PT33C Special Parts.

1	E20-0725	Left set plate
7	E20-0401	Left side plate
12/16	B35-8601	Ball bearing
17	E30-7502	Frame assembly
41	E20-3501	Line guard
45	E39-0101	Right side plate
46	E19-7301	Flipping/casting selector
48	E19-5401	Line memo
49	637-0601	"O" ring C
52	E08-8001	Ball bearing
60	B35-8601	Ball bearing
72	E38-9801	Spacing sleeve
73	E15-4001	Ball bearing
77	B86-2402	Handle nut
78	040-320	Handle nut
79	353-8302	Handle nut
82	B68-4402	Sealing washer

PT33P Special Parts.

1	E20-0708	Left set plate
7	E20-0401	Left side plate
12/16	B35-8601	Ball bearing
17	E30-7502	Frame assembly
41	E20-3501	Line guard
44	E19-7901	Pinion gear
45	E32-6101	Right side plate
46	E19-5401	Flipping/Casting selector
48	E19-5401	Line memo
49	637-0601	"O" ring C
51	E21-9701	Bearing retainer
52	E08-8001	Ball bearing
53	E23-0501	Spacer B
60	B35-8601	Ball bearing
68	E20-0101	Drive gear
72	E38-9801	Spacing sleeve
73	E15-4001	Ball bearing
76	B85-5101	Handle assembly
77	B86-2402	Handle nut
78	040-3201	Handle nut
79	353-8302	Handle nut
82	B68-4402	Sealing washer

PT33SH Special Parts.

1	E20 0701	Left set plate
7	E20 0401	Left side plate
12/16	B35 8601	Ball bearing
17	E30 7502	Frame assembly
41	E20 3501	Line guard
44	E30 4401	Pinion gear
45	E32 6101	Right side plate
46	E19 7301	Flipping/casting selector
48	E19 5401	Line memo
49	637 0601	"O" ring C
51	E21 9701	Bearing retainer
52	E08 8001	Ball bearing
53	E23 0501	Spacer B
60	B35 8601	Ball bearing
68	E30 4901	Drive gear
72	E38 9801	Spacing sleeve
73	E15 4001	Ball bearing
76	E32 6201	Handle assembly
77	B86 2402	Handle nut
78	040 320	Handle nut
79	353 8302	Handle nut
82	B68 4402	Sealing washer