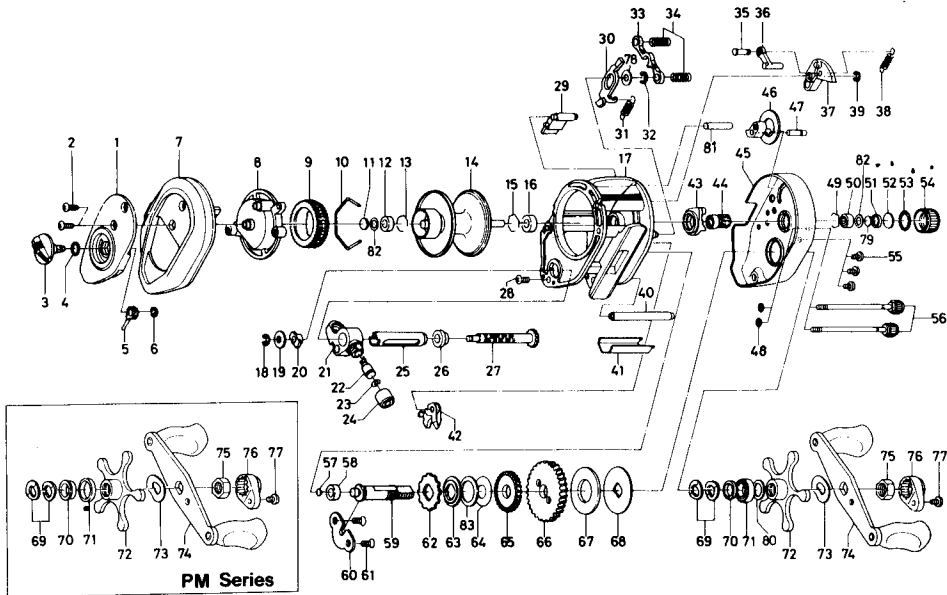


BAITCASTING REEL PR33P/33SH, PM33P/33SH



Key No.	Parts No.	Parts Name
1	E20-0711	Left set plate A
2	353-4402	Left side plate screw
3	B98-5001	Brake adjusting knob
4	637-0601	"O" ring A
5	B54-1701	Brake adjusting gear
6	320-4202	Brake adjusting gear retainer
7	E20-0402	Left side plate
8	E20-0501	Left set plate B
9	B66-1202	Magnet holder
10	B54-3201	Magnet holder ret. ring
11	375-7405	Spacer A
12	B55-0301	Bushing A
13	B42-1601	Bearing retainer A
14	E23-6201	Spool assembly
15	B42-1601	Bearing retainer B
16	E20-9001	Bushing B
17	E30-7501	Frame assembly
18	320-5901	Worm shaft retainer
19	376-1801	Worm shaft holder washer
20	B71-5601	Worm bearing A
21	E20-8401	Line guide
22	121-4212	Line guide pawl
23	373-1300	Line guide washer
24	342-4802	Pawl cap
25	B99-1801	Level wind guard
26	E19-9501	Worm bearing B
27	E19-9601	Worm shaft
28	353-4401	Stabilizer bar screw
29	E20-3701	Set plate spacer
30	E19-7601	Clutch trip plate
31	E19-7701	Clutch trip plate spring
32	320-1402	Clutch trip plate retainer
33	E30-4301	Yoke
34	E23-6401	Yoke spring
35	E19-7201	Clutch trip plate arm pin
36	E19-7101	Clutch trip plate arm
37	E19-7001	Clutch cam
38	E19-7501	Clutch cam spring
39	B33-9801	Clutch cam retainer
40	E19-9801	Stabilizer bar A
41	E20-3502	Line guard
42	E19-8101	Anti-reverse pawl

PR33SH Special Parts

1	E20-0713	Left set plate A
44	E30-4401	Pinion gear
66	E30-4901	Drive gear
74	E32-6201	Handle assembly

PM33P Special Parts

1	E20-0714	Left set plate A
50	E28-0201	Bushing D
70	E32-6301	Spacing sleeve
71	E32-6401	Drag washer E

Key No.	Parts No.	Parts Name
43	E19-6901	Yoke plate
44	E19-7901	Pinion gear
45	E32-6102	Right side plate
46	E19-7302	Flipping/casting selector
47	E19-7401	Flipping/casting selector pin
48	B85-3101	Right side plate screw washer
49	E21-9701	Bearing retainer C
50	E08-8001	Ball bearing A
51	E23-0501	Spacer B
52	B17-5501	Spacer C
53	171-5201	"O" ring B
54	B85-3401	Cast control cap
55	353-4402	Set plate screw
56	B91-1701	Right side plate screw
57	B12-0201	Drive shaft washer A
58	B55-0301	Bushing C
59	E30-4601	Drive shaft
60	E19-9401	Drive shaft retainer
61	B39-5503	Drive shaft retainer screw
62	E19-9901	Anti-reverse ratchet
63	E30-6101	Drive shaft washer B
64	B96-7401	Drag washer A
65	E30-4801	Worm drive gear
66	E20-0101	Drive gear
67	375-9403	Drag washer B
68	E20-0201	Key washer
69	150-8901	Drag spring washer
70	E20-8501	Spacing sleeve
71	E15-4001	Ball bearing B
72	B86-4205	Star drag
73	150-9001	Friction washer
74	B85-5101	Handle assembly
75	B86-2101	Handle nut
76	B86-2301	Handle nut plate
77	351-1803	Handle nut plate screw
78	371-6903	Clutch trip plate washer
79	374-9102	Spool adjusting cap metal
80	B68-4402	Drag washer C
81	E19-6801	Stabilizer bar B
82	E25-6101	Oiled washer
83	E30-4701	Drag washer D

PM33SH Special Parts

1	E20-0716	Left set plate A
44	E30-4401	Pinion gear
50	E28-0201	Bushing D
66	E30-4901	Drive gear
70	E32-6301	Spacing sleeve
71	E32-6401	Drag washer E
74	E32-6201	Handle assembly