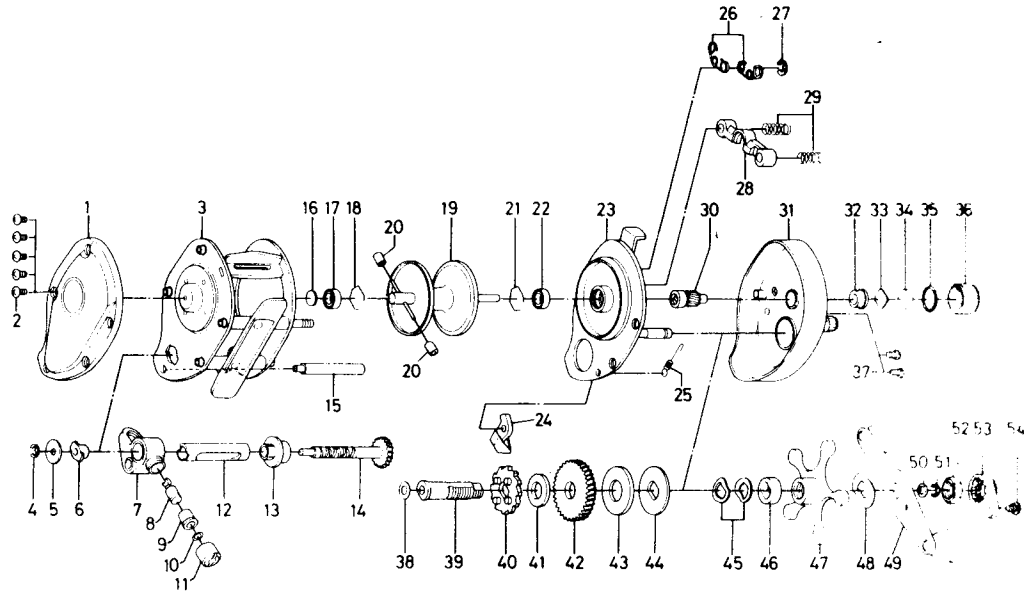
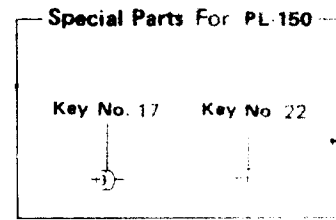


BAITCASTING REEL PROLITE 150 & 1500



Key No.	Parts No.	Parts Name	Key No.	Parts No.	Parts Name
1	B36-1301	Left side cover	34	B17-5501	Bearing metal washer
2	B36-0401	Left side cover screw	35	171-5201	"O" ring
3	B36-3801	Frame	36	B35-7301	Right spool cap
4	320-5901	Worm shaft retainer	37	B36-0401	Right side cover screw
5	376-1801	Worm shaft holder washer	38	373-7611	Gear shaft washer A
6	022-2201	Worm shaft holder	39	B35-9601	Gear shaft
7	782-8801	Line guide	40	B35-9701	Ratchet
8	121-4211	Line guide pin	41	B36-0001	Gear shaft washer B
9	022-2901	Line guide pin holder	42	B36-0101	Drive gear
10	375-4100	Line guide washer	43	B36-0201	Drag washer A
11	342-4801	Line guide nut	44	B36-0301	Drag washer B
12	B36-4101	Worm shield	45	150-8901	Spring washer
13	B36-1201	Shield bush	46	634-5801	Bush
14	B36-3102	Worm shaft	47	B36-0501	Star drag
15	B36-4401	Frame post	48	150-9001	Handle washer
16	375-7405	Bearing metal washer	49	747-1701	Handle
17	B35-8601	Ball bearing	50	B41-1701	Handle nut washer
18	B42-1601	Ball bearing retainer	51	320-8202	Handle nut retainer
19	B36-4501	Spool	52	B12-4701	Handle nut
20	B35-2901	Brake collar	53	B14-2501	Handle nut plate
21	B42-1601	Ball bearing retainer	54	351-1801	Handle nut plate screw
22	B35-8601	Ball bearing	55	373-7805	Handle adjusting washer
23	B35-7401	Set plate			
24	B35-9401	Anti-reverse claw	PL-150 Special Parts		
25	B35-8901	Anti-reverse claw spring	1	B36-1302	Left side cover
26	B36-9101	Set plate spring	3	B41-3701	Frame
27	320-1402	Clutch ret. ring	7	782-8803	Line guide
28	B35-9001	Pinion yoke	17	B41-3401	Bearing metal
29	144-7101	Pinion yoke spring	19	B36-4502	Spool
30	B35-9101	Pinion gear	22	B41-3401	Bearing metal
31	B35-6603	Right side cover	23	B41-3501	Set plate
32	B35-7201	Bushing	31	B35-6606	Right side cover
33	B17-5401	Ball bearing ret. washer	47	B36-0502	Star drag
			49	747-1704	Handle