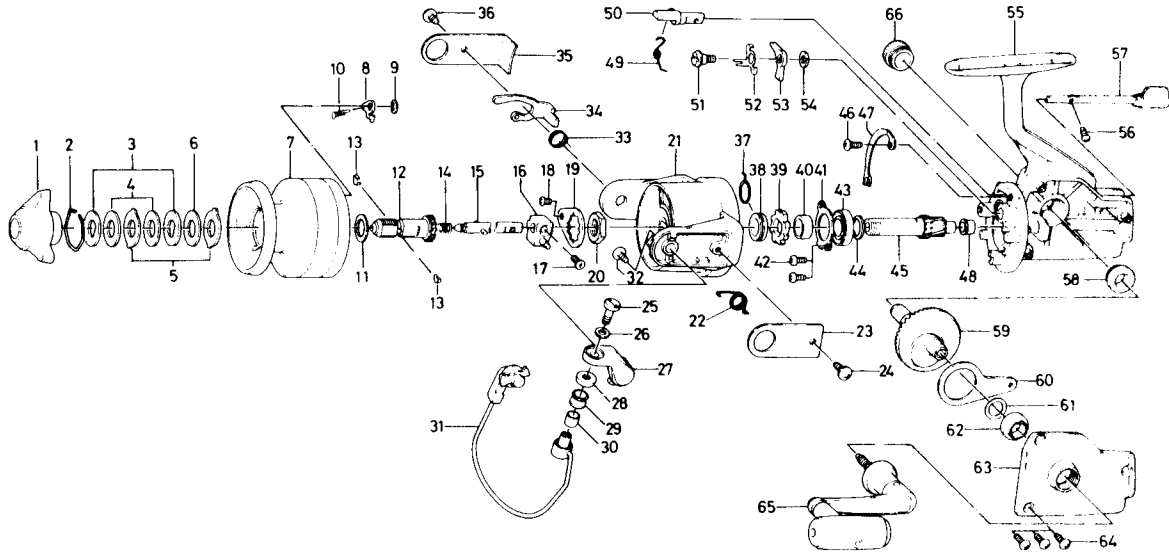


SPINNING REEL PC-16



Key No.	Parts No.	Parts Name	Key No.	Parts No.	Parts Name
1	740-3801	Drag knob	34	B43-7201	Bail kick lever
2	171-7701	Drag washer retainer	35	B63-3301	Bail kick lever cover
3	374-4802	Drag D washer	36	B43-6602	Bail kick lever cover screw
4	373-3701	Disc washer	37	145-0901	Anti-reverse claw spring
5	373-3603	Drag A washer	38	501-9901	Spring holder
6	373-3704	Drag washer A	39	280-9002	Ratchet
7	B63-3501	Spool	40	B44-0401	Spacer
8	B07-5302	Spool click claw	41	B35-6301	Ball bearing ret. washer
9	320-5901	Spool click claw retainer	42	B43-5601	Ball bearing ret. washer screw
10	144-1211	Spool click claw spring	43	636-6011	Ball bearing
11	375-5701	Spool washer	44	B55-5001	Pinion washer
12	381-9311	Spool metal	45	B43-5801	Pinion gear
13	151-7211	Spool metal leaf spring	46	B43-5601	Cam kick plate screw
14	B60-1701	Main shaft spring	47	B32-1701	Cam kick plate
15	B43-8001	Main shaft	48	B43-5701	Pinion holder
16	637-0101	Oscillating support	49	144-0321	Anti-reverse cam spring
17	B39-5501	Oscillating support screw	50	B43-5101	Anti-reverse cam
18	B43-6601	Rotor nut holding plate screw	51	B44-0501	Anti-reverse claw screw
19	B02-1601	Rotor nut holding plate	52	B55-7501	Anti-reverse claw plate
20	B43-7601	Rotor nut	53	111-8201	Anti-reverse claw
21	B63-3101	Rotor	54	375-2001	Anti-reverse claw washer
22	B43-6101	Bail spring	55	B43-4702	Body
23	B43-6502	Bail spring cover	56	B43-5501	Anti-reverse lever screw
24	B43-6602	Bail spring cover screw	57	B43-5201	Anti-reverse lever
25	353-1811	Bail screw	58	B43-7702	Bearing
26	375-1001	Bail washer	59	B43-7801	Drive gear
27	B43-6201	Arm lever	60	481-2101	Oscillating slider
28	501-1601	Roller collar	61	373-7800	Drive gear adjusting washer
29	B41-2901	Line roller	62	B43-7702	Bearing
30	B41-3001	Sleeve	63	B43-8303	Body cover
31	B63-3701	Bail	64	B43-8501	Body cover screw
32	B01-7101	Arm lever screw	65	B70-9101	Handle
33	B43-7101	Bail kick lever spring	66	B22-4502	Handle screw cap