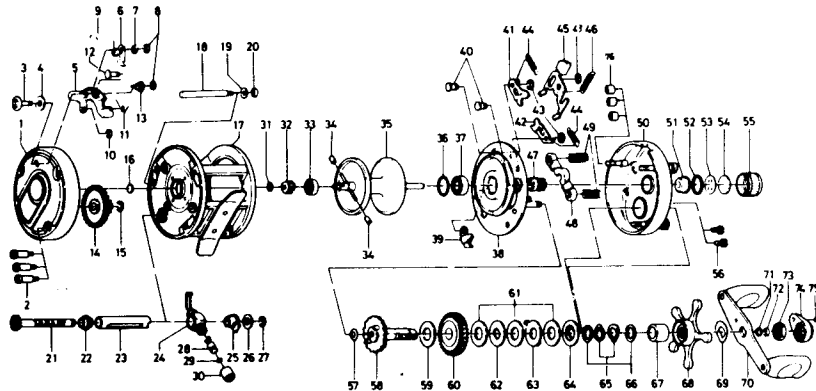


# BAITCASTING REEL

# Millionaire 6HM/6RM



Special Parts For 6RM  
Key No. 70



Key No.	Parts No.	Parts Name	Key No.	Parts No.	Parts Name
1	B34-0601	Left side cover	45	B33-7301	Clutch lever
2	B15-1901	Left side cover screw	46	142-8502	Set plate spring B
3	B34-1601	Click button	47	B33-7701	Pinion gear
4	B34-1501	Click button washer	48	B33-7501	Pinion yoke
5	B34-1101	Click set plate	49	B33-7601	Pinion yoke spring
6	B34-1701	Click claw	50	B33-6004	Right side cover
7	373-1302	Click claw washer	51	B33-6301	Bushing
8	320-5901	Click claw retainer	52	B05-5201	"O" ring
9	B34-1801	Click claw spring	53	373-7502	Bearing metal ret. washer
10	320-5901	Click button retainer	54	374-7221	Bearing metal washer
11	B34-1401	Click set plate spring	55	B14-6601	Right spool cap
12	B34-1301	Click set plate pin	56	353-1701	Right side cover screw
13	B34-1201	Click claw nut	57	373-7611	Gear shaft washer A
14	413-0001	Cog wheel	58	B33-7902	Gear shaft
15	320-8002	Cog wheel ret. ring	59	374-9302	Gear shaft washer B
16	374-9102	Bearing metal washer	60	413-8802	Drive gear
17	B33-8702	Frame	61	374-9305	Drag washer A
18	B10-1401	Frame post	62	374-9401	Drag washer B
19	373-7611	Frame post spring washer	63	375-8701	Drag washer C
20	320-5901	Frame post retainer	64	376-0001	Drag washer D
21	B10-1201	Worm shaft	65	150-8901	Spring washer
22	B10-0301	Shield bushing	66	373-7803	Drag washer E
23	B10-1101	Worm shield	67	502-0801	Spacing sleeve
24	B09-9501	Line guide	68	780-9805	Star drag
25	B09-9701	Worm shaft holder	69	150-9001	Handle washer
26	373-2700	Worm shaft holder washer	70	747-1701	Handle
27	320-8002	Worm shaft retainer	71	B41-1701	Handle nut washer
28	121-4211	Line guide pin	72	320-8202	Handle nut retainer
29	375-0800	Line guide washer	73	B43-3601	Handle nut
30	341-5901	Line guide nut	74	B43-3901	Handle nut plate
31	B33-9801	Spool gear ret. ring	75	351-1801	Handle nut plate screw
32	B33-9701	Spool gear	76	372-4701	Right side cover screw nut
33	637-2101	Ball bearing	<b>6RM Special Parts</b>		
34	B35-2701	Brake collar	1	B34-0701	Left side cover
35	B34-0801	Spool	33	637-5601	Bearing metal A
36	171-1001	"O" ring	35	B34-0802	Spool
37	B18-1601	Ball bearing	37	B10-3801	Bearing metal B
38	B33-6401	Set plate	47	B34-0101	Pinion gear
39	770-0301	Anti-reverse claw	50	B33-6005	Right side cover
40	121-6801	Set plate screw	60	B10-4101	Drive gear
41	040-4701	Clutch support A	68	780-9806	Star drag
42	040-4801	Clutch support B	70	B20-8402	Handle
43	320-8202	Clutch ret. ring			
44	142-8503	Set plate spring A			