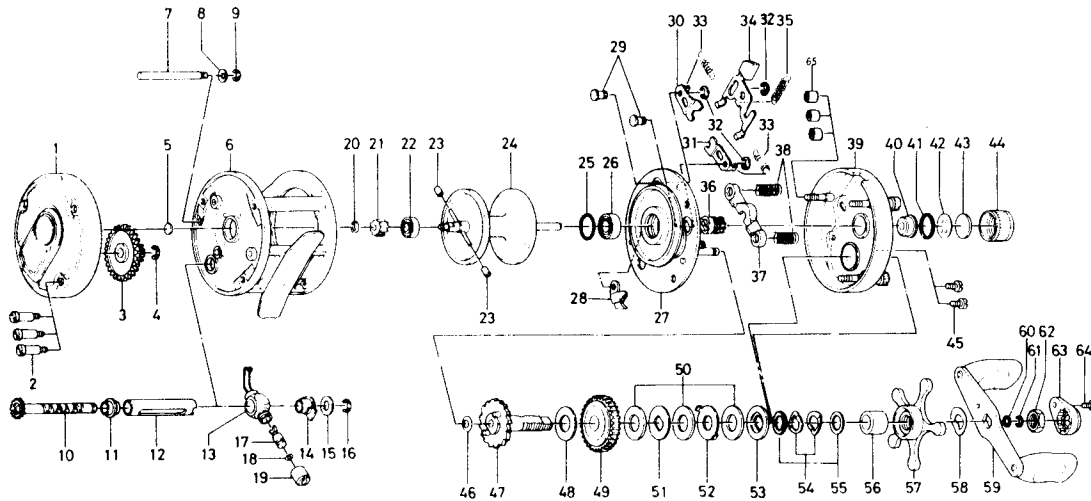


# BAITCASTING REEL **Millionaire 5HM**



**Key No.**

Key No.	Parts No.	Parts Name
1	B33-8201	Left side cover
2	B15-1901	Left side cover screw
3	413-0001	Cog wheel
4	320-8002	Cog wheel ret. ring
5	374-9102	Bearing metal washer
6	B33-8701	Frame
7	B10-0401	Frame post
8	373-7611	Frame post spring washer
9	320-5901	Frame post retainer
10	B10-0101	Worm shaft
11	B10-0301	Shield bushing
12	B09-9601	Worm shield
13	B09-9501	Line guide
14	B09-9701	Worm shaft holder
15	373-2700	Worm shaft holder washer
16	320-8002	Worm shaft retainer
17	121-4211	Line guide pin
18	375-0800	Line guide washer
19	341-5901	Line guide nut
20	B33-9801	Spool gear ret. ring
21	B33-9701	Spool gear
22	637-2101	Ball bearing
23	B35-2701	Brake collar
24	B33-9402	Spool
25	171-1001	"O" ring
26	B18-1601	Ball bearing
27	B33-6401	Set plate
28	770-0301	Anti-reverse claw
29	121-6801	Set plate screw
30	040-4701	Clutch stopper plate A
31	040-4801	Clutch stopper plate B
32	320-8202	Clut ret. ring
33	142-8503	Set plate spring

**Key No.**

Key No.	Parts No.	Parts Name
34	B33-7301	Clutch lever
35	142-8502	Set plate spring B
36	B33-7701	Pinion gear
37	B33-7501	Pinion yoke
38	B33-7601	Pinion yoke spring
39	B33-6007	Right side cover
40	B33-6301	Bushing
41	B05-5201	"O" ring
42	373-7502	Bearing metal ret. washer
43	374-7221	Bearing metal washer
44	B14-6601	Right spool cap
45	353-1701	Right side cover screw
46	373-7611	Gear shaft washer A
47	B33-7901	Gear shaft
48	374-9302	Gear shaft washer B
49	413-8802	Drive gear
50	374-9305	Drag washer A
51	374-9401	Drag washer B
52	375-8701	Drag washer C
53	376-0001	Drag washer D
54	150-8901	Spring washer
55	373-7803	Drag washer E
56	502-0801	Spacing sleeve
57	550-3101	Star drag
58	150-9001	Handle washer
59	747-1701	Handle
60	B41-1701	Handle nut washer
61	320-8202	Handle nut retainer
62	B12-4701	Handle nut
63	B14-2501	Handle nut plate
64	351-1801	Handle nut plate screw
65	B42-7001	Right side cover screw nut